

CALLIGRAPHY *fos*

CALLIGRAPHY GUILD



Cover art by
Janell Wimberly

February 2024
VOLUME 44 NO. 5



*"We Ink 'em Up!"
Presidential Seal by Janell Wimberly*

President's Letter

Dear Kaligrafos members,

February 2024

Unique!

Each one of you in Kaligrafos is unique. At a time when many calligraphy groups are struggling, I believe it is the uniqueness of our members, along with dedication and a welcoming spirit, that continues to attract new members. Programs like the one presented by June Leschek last month are unique, informative and fun and make us all want to come back month after month and bring our friends. Thank you June!

This month of February we have a unique Kaligrafos tradition - the Valentine Social. Most of you are very familiar with this yearly event and have been looking forward to and preparing for it in some way all year — or wishing you were already prepared. The event highlight, of course, is the Valentine card exchange. If you are still mulling over ideas for the design and calligraphic content, or whatever your specialty is, of your handmade Valentine exchange card or object (some people get very creative) you can always go to kaligrafos.com and browse past March newsletters to get inspired with ideas. I know of no better place. So, get busy. I can't wait to see the creativity this year!

A whole table of goodies, mostly homemade, will be awaiting for our refreshment. Thank you to all the contributors.

Don't forget to bring some cash to buy Raffle tickets for the Valentine Social Raffle! Rick has some lovely items lined up for the raffle and you won't want to miss the chance to take some home. Who will be the person with the most winning tickets this year?

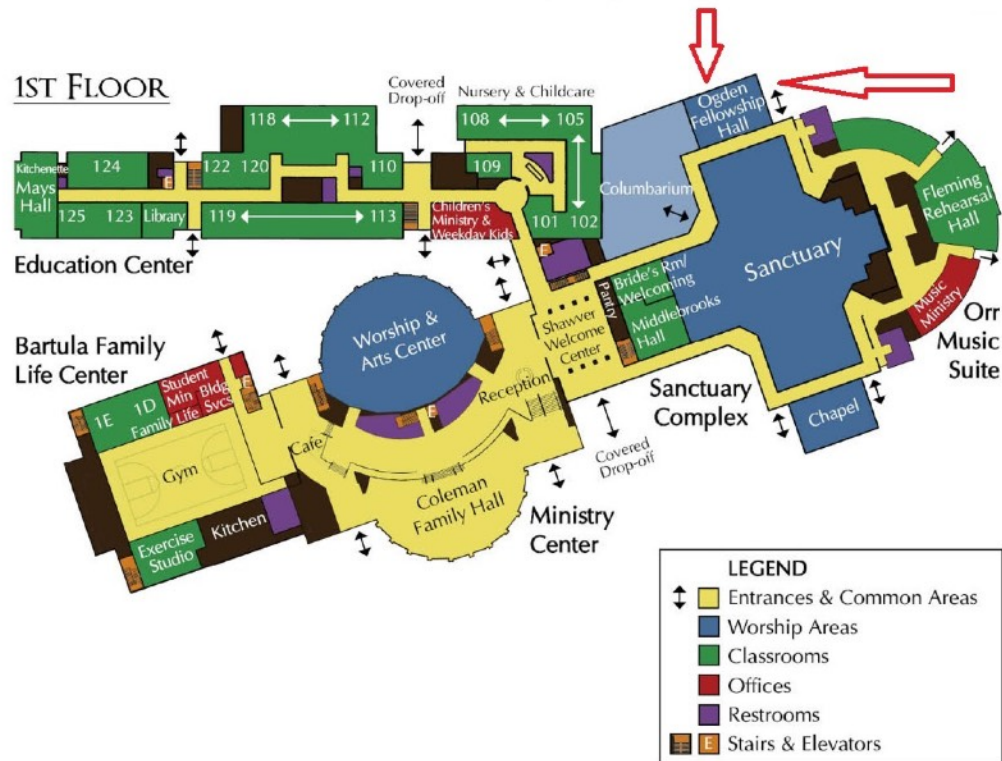
Join us on February 10th at the Lovers Lane United Methodist Church's Copeland House. If you plan to attend and haven't RSVP'd to your invitation yet, please do so now by email including the names of the person(s) attending to valentine-rsvp@kaligrafos.com to ensure a pre-lettered name tag will await your arrival.

Thank you for sharing your love of calligraphy, unique art and personality with the rest of us!

Randy Stewart

Kaligrafos President

General Meetings 2nd Saturdays at 10:00am – noon
Come early to socialize 9:30am to 10:00am
Meeting Location
First United Methodist Church
503 N. Central Expressway, Richardson, TX 75080
First Floor, Ogden Fellowship Hall (see red arrows on map)



Board Members

Executive Board

Randy Stewart, President
 June Baty, Vice President
 Sherry Barber, Treasurer
 Betty Barna, Secretary

Chairpersons

Sherry Barber, Web/Communications
 Jeri Wright, Workshops
 Virginia Littlepage, Membership
 Jean Taylor, Newsletter

PROGRAMS, WORKSHOPS, & MINI WORKSHOPS

2023 - 2024 Monthly Programs

September 9, 2023	Cutout Neuland Letters a la Carl Rohrs	Betty Barna
October 14, 2023	Flag Books	Jeri Wright
November 11, 2023	Bister Techniques - Bazaar	Monica Winters
January 13, 2024	Painting on Bottles and Glass	June Leschek
February 10, 2024	Valentine Social & Raffle	Monica Winters - Chairperson
March 9, 2024	Art of Daily Creative Practice	Roxanne Glaser
April 13, 2024	Tunnel Books	Lisette Landauro
May 11, 2024	Playful Letters	Carrie Imai

Mini-Workshops

April 13, 2024 - Janell Wimberly will present “Writing in Circles and on a Curve” mini-workshop after the regular meeting.

2023-2024 Membership

Join Kaligrafos
The Dallas Calligraphy Society
\$25 for individual membership
\$35 for family membership
<https://kaligrafos.com/join-us/>

Please send membership changes of your information via email to:
membership@kaligrafos.com

Valentine Social & Raffle

February 10, 2024

10 a.m. - noon

Invitations for this year's event were handed out at last month's meeting to those members in attendance.

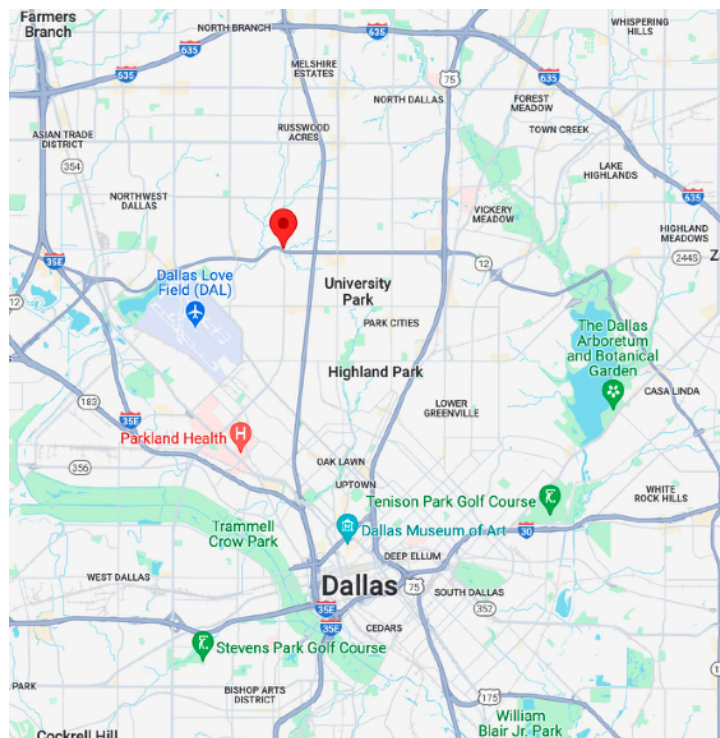
For members not at the January meeting, your invitation has been mailed to you.

Don't forget to bring cash for the raffle & your handmade Valentine's card.

Bring a card ~ Receive a card

Please RSVP as soon as possible if you haven't done so already.

Map for Valentine Social & Raffle



Valentine Social & Raffle
Serenity House
Lover's Lane United Methodist Church
9200 Inwood Road
Dallas, TX 75220

- When you arrive at the church, drive to the northeast corner of the church parking lot. The Serenity House is in that area and there is plenty of parking out in front.
- Proceed up the stairs/ramp and into the house.
 - Food and Raffles will be to your left.
 - Bring your food back and place it on the tables in the kitchen.
 - Raffle tickets may be purchased.
 - Card display room to your right.
 - Pick up your name tag.
 - Take your card to the front of the room and sign up with a number.
 - Place the card with the number next to it on the table.
 - If you would like your piece displayed on a stand, please bring one with you.
 - You are welcome to photograph all participants' projects.

PLAYFUL PARALLEL PENS

MINI WORKSHOP REVIEW by Jeri Wright

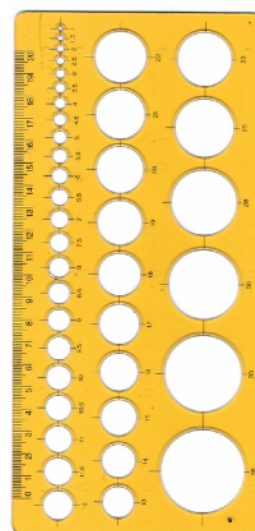
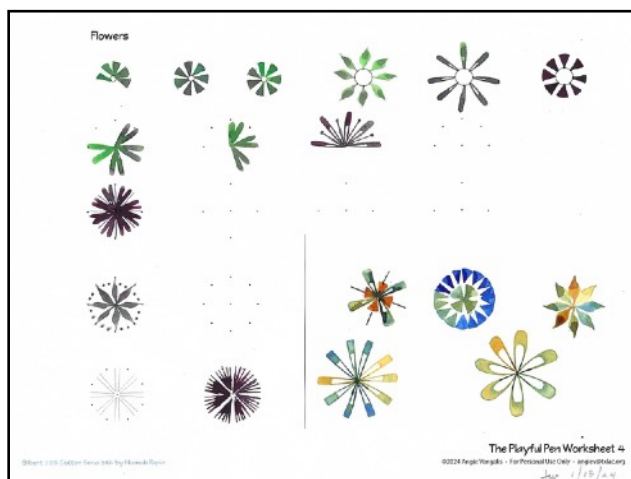
We had a full class with 23 participants for Angie Vangalis' Playful Parallel Pen (PPP) mini workshop following the January meeting. Part of our workshop fee was a kit of so many useful items both for this workshop and for our studio use. Included in the full size kit (but not limited to) was a Monoject syringe for filling our PPPs, mini pipettes, eyelash brush (perfect for cleaning the pen unit), loading brush, opaque white pen, empty cartridges (for several color use), sticky tack for plugging ink into the cartridge, small bottle of Gum Arabic, 9"x12" thick foam pad, bead packets for dressing up our PPP Handouts, white and light gray ink, AND a surprise. . .a brand new 6.0mm PPP (compliments of TXLAC)!

Angie began by giving detailed information on the use and cleaning of our PPP's. There were quite a few people in the class that had never used these pens and although they are simple to use with the cartridges included with the manufacturer's packaging, there are specific steps in (1) inserting the cartridges properly, and (2) disassembling for cleaning and reassembling for next use. Paying attention to these details will assure you of a long life for your PPP's.

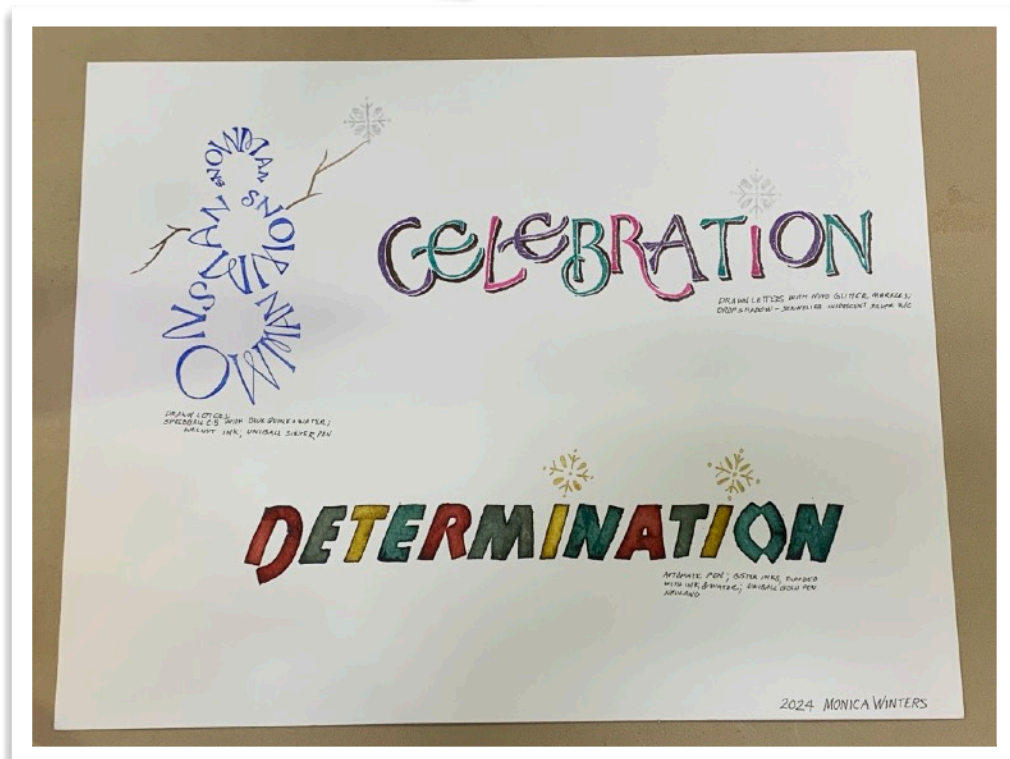
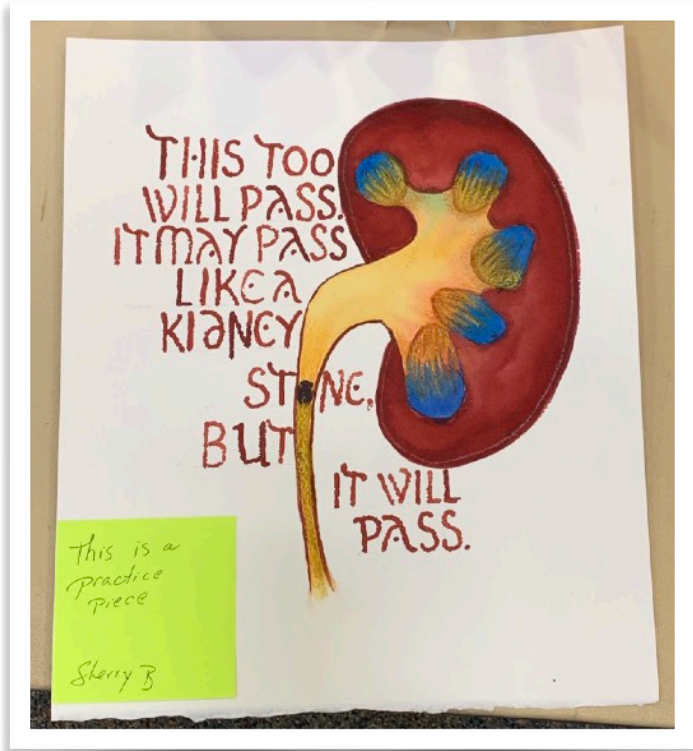
Angie provided handouts which she demonstrated and we followed along working our pens to create the various marks and pen manipulations necessary for so many different shapes. These shapes are then combined to create flowers, vines, leaves, etc. The pen manipulation, as we all found out, is not as simple as it would seem. It is really amazing all the wonderful results you can get from this pen ~ lettering and more!

Thank you, Angie, for bringing your knowledge and enthusiasm to Kaligrafos and teaching us some wonderful techniques so that we can go forward and create on our own!

NOTE: Here is Jeri's practice sheet and also a helpful tool she uses.



SHOW & SHARE



THE 75TH IAMPETH CONFERENCE

JULY 1-6, 2024

SAN ANTONIO, TEXAS

YOU MUST BE A MEMBER OF IAMPETH TO ATTEND
THIS CONFERENCE.

INTERNATIONAL ASSOCIATION OF MASTER
PENMEN, ENGROSSERS, AND TEACHERS OF
HANDWRITING

FOR MORE INFORMATION AND TO BECOME A
MEMBER OF IAMPETH PLEASE VISIT THEIR
WEBSITE.

[HTTPS://WWW.IAMPETH.COM](https://www.iampeth.com)

KALIGRAFOS WORKSHOP & PROGRAM VIDEOS-MEMBERS ONLY

Did you know that Kaligrafos has a YouTube channel of some previous workshops and programs? If you would like to watch these videos, please email Sherry Barber and she will send you a private link to watch them. These are for members only, not for wide distribution.

“Painting on Bottles & Glass” by June Leschek

“Pretty Paisley Letters” by Cecilia Boschi, Day One ~ 1 hr 32 minutes

“Pretty Paisley Letters” by Cecilia Boschi, Day Two ~ 1 hr 35 minutes

“Pigments” by Margaret Mall ~ 35 minutes

“Watercolor Fun for Holiday Envelopes ~ 1 hr 9 minutes

“Sewn Boards Binding” ~ 20 minutes

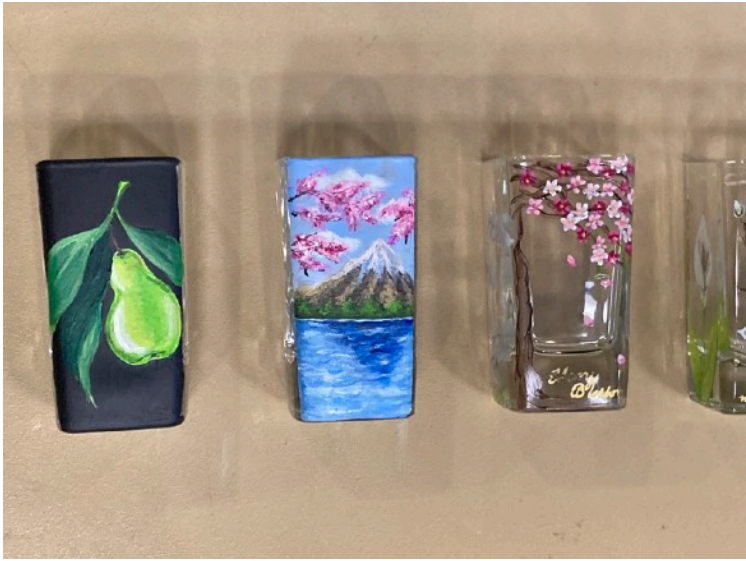
January Program: Bottle and Glass Painting with June Leschek

Reviewed by Sarah Schulz

Our well-attended January program was presented by June Leschek who shared her knowledge of bottle painting with us. She was enthusiastic and gracious in her presentation, and the amount of sheer information she shared in an hour was impressive! June started in wedding illustration - giving birth to the clever business title "I Do illustration", and from there she also discovered calligraphy and bottle painting. She can now be found regularly engaged in live events for engraving and bottle painting as well as commission work.



Glass painting is not limited to bottles only - June brought in lovely samples of her work, many on the empty glass containers from the "mini indulgences" line of desserts from the restaurant Seasons 52, which give a nice flat painting surface. She loves glass painting for gifts, saying: "and then you win Christmas!" Paintable surfaces are not limited to wine bottles only; some examples are perfume bottles, photo frames, crystal stemware, ornaments, stone, wood and paper, and more. For all these, June uses acrylic paints, noting that mistakes are easier to fix with acrylic. Any engraving should always be done first if doing both engraving and painting.



Some examples of June's work

Prepping glass for painting with rubbing alcohol is important since all glass comes with a finish from the factory that will prevent paint from sticking. For live events, June uses Folk Art multi-surface acrylic as it dries quickly and is cheaper than others. She keeps these in a paint saver box with smaller wells; it seals well and keeps the paint wet longer, and she closes the lid when not painting to keep the paints from drying out. For commissions, which tend to cover more bottle surface, she will paint a white base coat with Liquitex basic acrylic in titanium white.



I love seeing how artists set up their work areas! Look at that adorable painted water jar!



For live painting events, she's a big fan of the "one-and-done technique" - it allows for two colors on the brush at once, and the colors blend as you paint. She demonstrated this on the mini Martinelli's bottle she painted live for us - dip each corner of a flat brush in a different color, then paint. June says for live events, she needs each bottle to be done in about 15 minutes, so this is a huge time saver.



The one-and-done technique, and rotating two loaded brushes for the flowers and foliage

June shared lots of favorite supplies, noting that brushes didn't need to be expensive, just have soft bristles so they don't lift up what you've already painted. She also finds many supplies at the cosmetics store Miss A - e.g. fan brushes sold for nail art, but used for fur or foliage, or steel palettes for mixing. She uses a ball stylus for dots and pointed q-tips for detail cleanup. She recommends a white paint pen as a quick base coat for small areas. For weird bottle shapes and to aid in hand placement, she uses a microbead pillow. She protects her work surface with a silicone mat - this also protects from any accidental bottle chipping. Other supply tips include a sewing tape measure to help draw a baseline on curved glass, washi tape to cover labels, deco color paint pens in extra fine for detailing, a portable lamp as she's often in a dark corner, and a fan to speed drying time! More supply recommendations are on her website

<https://www.idoillustration.com/favorite-supplies-tools>



One tip I found really amazing is her system for getting through an entire painting event with only a 30mL jam jar for water (which is adorably painted, by the way)! She has found this necessary as sometimes she has only a tiny table to work with and nowhere to dump water. To do this, she'll wipe off with a paper towel, then dab on a baby wipe to remove most of the paint, *then* get only a little water (no swishing!) and go back and forth between the water and baby wipe until the brush is basically clean, *then* finally swish in the water. She keeps a little bag hanging from the table to collect used paper towels and baby wipes.



June also discussed practical tips for live events, and the pros and cons between live events and commissions. She finished with a live demo painting a mini Martinelli's bottle. Thanks again June for a fantastic program! You can find her on Instagram @idoillustration and on her website <https://www.idoillustration.com/>

PAINTING

ENGRAVING

CALLIGRAPHY

I Do ILLUSTRATION

www.IDOILLUSTRATION.com
info@idoillustration.com

FUNDAMENTALS OF BOTTLE PAINTING CLASS

FAY AMAZON SUPPLIES

IDOILLUSTRATIONS OFF (GOOD TILL 2/7)

INSTAGRAM

FASHION ILLUSTRATION

FOILING

BEAUTIFUL GIFTS WITH MEANING

PYROGRAPHY

DEBOSSING

CUSTOM COMMISSIONS



MULTI MEDIA

Waterproof
Tear Resistant
Foldable

Étanche
Résistant
aux déchirures
Pliable

Great for:
Sketching
Painting
Monoprinting
Stenciling
Rubber stamping
Cartooning
Finger Painting

Parfait pour :
Esquisse
Peinture
Impression
Pochoir
Estampage
en caoutchouc
Caricature
Peinture au doigt

Use with:
Watercolor
Gouache
Graphite
Color Pencils
Charcoal
Pastels
Alcohol Ink
Ink Jet
Acrylics
Pen & Ink
Markers

A utiliser avec :
Aquarelle
Encre
Graphite
Charbon de bois
Pastels
Crayons de couleur
Encre à alcool
Stylo et encre
Marqueurs

MINERAL PAPER

Made from calcium carbonate
providing a unique texture for water based or dry media.
Bright white, vellum surface, acid free

Fabrique à partir de carbonate de calcium
offrant une texture unique pour les supports secs ou à base d'eau.
Blanc brillant, surface de vélin, sans acide

Papier Minéral Multimédia
Size 9" x 12" (22.9 x 30.5cm)
20 sheets, 20 feuilles
100 lb (150 gsm)

Made in Korea
Fabrique en Corée

JMP200

Yasutomo®

Yasutomo 3740 Skypark Drive, Torrance CA 90505 www.yasutomo.com

0 31248 98029 8

MONTHLY WORD CHALLENGE

Calligraph any or all of these words in your favorite hand or try them in a new one. They can be as ornate or simple as you'd like. Please bring them to the next meeting for the Show and Share table. Each future newsletter will have that month's word challenge. Size is 11 x 14 or smaller.

FOR MARCH MEETING: ***Leprechaun - Fanciful- Springtime - Easter***

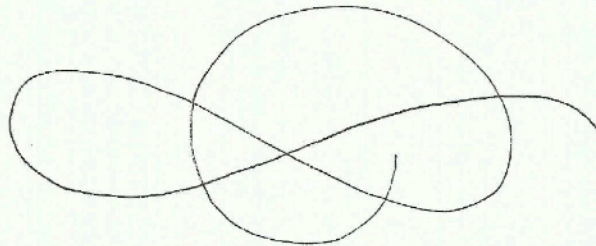
NOTE: February meeting is the Valentine Social so we will not have a Show and Share table set up.

Welcome New Members

Tracy Knott

Erin Dietz

Carol Alexander



April Mini-Workshop presented by Janell Wimberly.

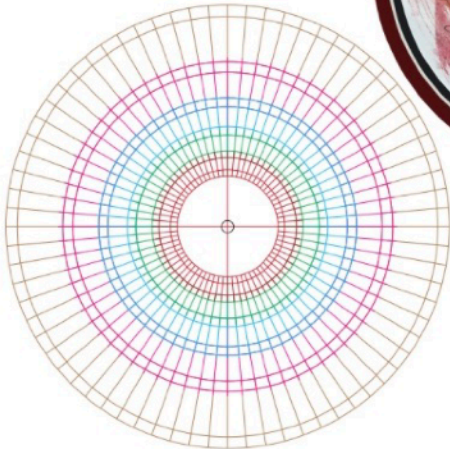
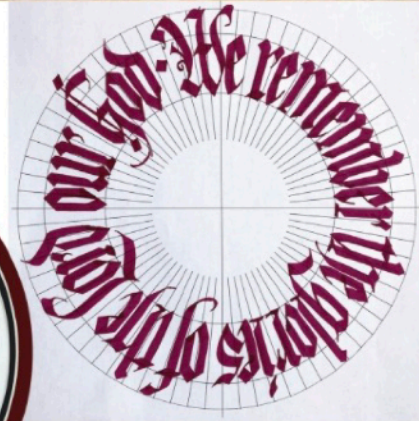
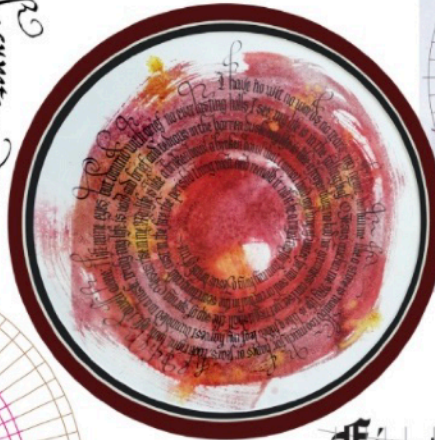
For payment and supplies needed, visit <https://kaligrafos.com/workshops/>

Writing in Circles and on a Curve!

At first the idea of writing in circles or on a curve can seem daunting, but with the aid of a few hand tools or a computer to make a template you can "circle up" your lettering in all sizes, or create fancy curved titles for various certificate needs.

I will be creating several helpful PDF templates that users can download and print out for use in class and on working projects and explain how you can enlarge small templates to larger sizes.

I will provide a list of tools and materials that will be used in producing some "circled" and "curved" lettering for practice in a class setting so you can create your own circular and curved custom layouts and artwork for future projects!



First Christ Church

First Christ Church

KALIGRAFOS APRIL 2024
MINI WORKSHOP
WRITING IN CIRCLES & CURVES
WITH JANELL WIMBERLY
REGISTRATION FORM

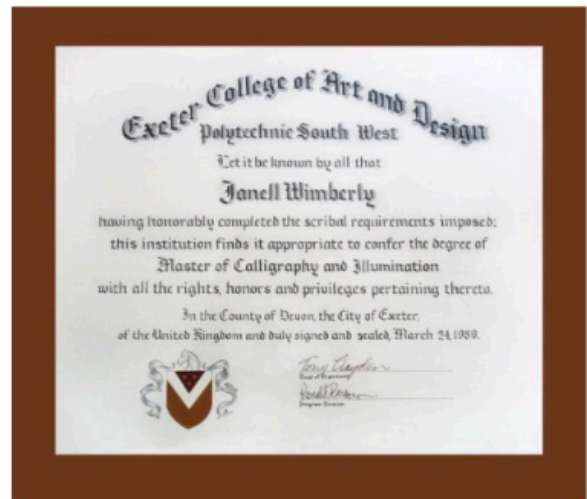
Supply List

Choice of Ink – Higgins eternal, walnut ink, sumi, what you like in your dip pen.

Speedball nibs: C-0, C-1, C-2, C-3, C-4 with staffs or Pilot Parallel pens in various sizes. Be adventurous & practice with several nibs (even pointed!).

Ruler, sharp H or H2 pencil, eraser, glue stick, X-Acto knife with sharp blade, small cutting board, and paper towels.

Optional items: good grid paper (8 or 10 square), Pigma micron pen or fine point marker, compass, small light box (for use in project).



Detach & submit with payment

NAME: _____

EMAIL: _____

CELL: _____

Attached is my check for \$25, payable to Kaligrafos

I sent my payment via the PayPal button on the Kaligrafos Workshop page.

Please complete this form and give to Sherry Barber with your payment.



MEMBER SPOTLIGHT

Margaret Darphin Mall

Margaret Darphin Mall believes she joined Kaligrafos in approximately 2004-2005 following in the footsteps of her late sister Ruthi E. Darphin. When Margaret got all of Ruthi's nibs, pen holders, brushes, and so forth, she found a membership directory and looking through it decided she needed to join the group.

Over the years, Margaret has served chair positions such as Programs and Exhibits. She also helped plan the menus for the annual Valentine Exchange for several years until 2023.

After taking several calligraphy classes from Susie Melissa Cherry who was a founder of Kaligrafos, Margaret opened her business ~ Calligraphy Art Studio® ~ and offered her own calligraphic services.

Margaret creates greeting cards for holidays and birthdays, and thank you notes for purchase. She accepts commissions for calligraphed resolutions, Bible verses, favorite quotes for homes, as well as special retirement gifts, birthday gives, and more. Margaret accepts commissions to letter marriage certificates, such as Ketubah texts (Jewish marriage contracts) and event place cards.

For her watercolor art, Margaret prefers working with gouache watercolors, dry pigments, FineTech and Windsor & Newton watercolors, various Japanese inks, and other mediums showing movements of letters in abstract works. Most all of Margaret's hand lettered quotes, prayers and bible verses, and wedding initials are all created using gouache watercolors, dry pigments, various inks, gilding with 24KT gold white gold and platinum.

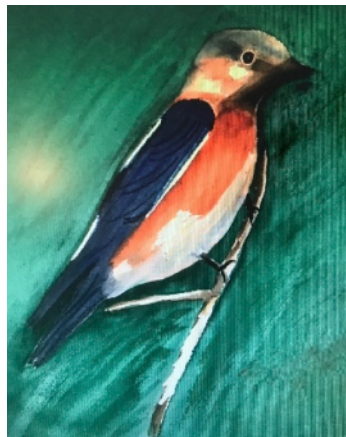
Somewhat of a "late bloomer" to art and the watercolor world, Margaret continues developing her watercoloring talents combining the art with calligraphy. In 2019, she created a large multimedia (watercolor and acrylic) painting on a gallery wrapped 48" x 24" canvas.

Over the years, Margaret has studied calligraphic techniques under Reggie Ezell, Master Scribe from Chicago, IL (now retired); Pamela Paulsrud, Illinois; Sherri Lovler, California; Madeleine Durham, Santa Fe; Holly Monroe (Celtic knots), Oregon; Yves Letterme, Belgium, and many others over the years. Her favorite calligraphic letter styles are: Uncial, Italic, and Bickham. Her favorite nibs are mostly Mitchell nibs.

Margaret especially loves the camaraderie of the Kaligrafos members as well as the programs presented each month. When learning someone loves calligraphy, Margaret assures them they will make many friends in Kaligrafos. Margaret encourages those who tell her they want to learn more about calligraphy to look up our website and plan to come to a meeting and she'll meet them at the next meeting.

As the former Exhibit Chairperson for Kaligrafos Calligraphy Society, Margaret, along with other Kaligrafos members, has exhibited her calligraphic art at the Courtyard Gallery, Plano, TX; Goodrich Gallery; First United Methodist Church, Dallas, ArtReach Gallery Lovers Lane United Methodist Church, Dallas, TX; Irving Arts Center and Jaycee Park Gallery; Irving, TX, as well as the former Artists Showplace, Dallas, TX; and Frisco Fine Arts Gallery, Frisco, TX.

Someone who loves and reveres art, Margaret currently serves as Exhibit Chair for the ArtReach Visual Arts program at Lovers Lane United Methodist Church. This program features art exhibits every ten to eleven weeks each year from artist groups such as Richardson Art Association, Associated Artists Association, Faith Artists, as well as individual artists from the Dallas Metroplex.



When
the student
is ready,
the teacher
will appear.

Buddhist Proverb

