

KALLIGRAPHOS

GUILD

CALLIGRAPHY

*Annual
Valentine*

Social

&

Raffle

*Copeland House,
Lover's Lane UMC*

President's Letter



"We Ink 'em Up!"
Presidential Seal By Janell Wimberly

Hello Kaligrafos members!

As I write this, we are two weeks away from our annual Valentine Social, one of our favorite meetings of the guild year. I'm sure by now we are all giving thought and action to our valentine exchange. If any of you are like me, I've probably considered ten different ideas for my valentine, then discarded and rethought the whole thing several times! I do like to go back to the past March newsletters over the years and gain inspiration from all the beautiful and whimsical expressions that have been exchanged over the years. Our coordinators for this year's social are Lynda Kemple and Sherry Barber., with the close assistance of Margaret Mall, who is organizing the refreshments. Brenda Burns is again coordinating our ever-popular Valentine Raffle which includes some fantastic donations by members of the guild and a few outside contributors. Make sure you don't miss this celebration of the HeART!

I would like to thank Sandra Douglas, Javier Mardones, Tatyana and AnnaSophia Bessmertnaya, and Brenda and Tom Burns for joining me for a few hours the other Saturday to make Mother's Day cards for our community project for the Genesis Woman's Shelter. We currently have 115 cards embellished and wrapped! We need a minimum of 35 more cards to meet the estimated amount the shelter contact has suggested. Any amount over that will be an additional blessing. Our next card making day will be March 21st. You can sign up at the March meeting if you are able to join us. The cards will be delivered the first week of May.

We have so many lettering adventures for everyone during the months of March, April and May of this guild year: Pointed Pen Uncial with Betty Barna, Clothesline Caps with yours truly, and Button alphabet with Betty & Tom will be programs you won't want to miss. And then we're offering two mini workshops: Weaver Writing Modified with Tom Burns and Pencil Romans with Janell Wimberly. I'm guessing that at least one of these will whet your appetite for learning something new.

See you at the 2020 Valentine Social!

Jeri Wright
Kaligrafos President



**See next page for
this month's meeting.**

General Meetings Schedule

February 8th • Annual Valentine Social at Copeland House (formerly *Serenity House*) at Lovers Lane UMC

March 14th • Hand #2 Pointed Pen Uncial – Betty Barna

April 11th • Hand #3 Clothesline Caps – Jeri Wright

May 9th • Hand #4 Button – Betty Barna, Tom Burns

Board Meetings

@ Jeri's Studio

March 7, 2020

June 6, 2020

The Kaligrafos Newsletter is published 9 times yearly in the months of regular meetings. Send art, articles, announcements or comments to newsletter@kaligrafos.com

Workshops

June 18th & 19th • The Enchanted Garden
– Heather Held

June 20th & 21th • Enchanted Letter
– Heather Held

Mini Workshops

January 11th • Paper Sculpture Flowers
– RafiQ Sellah-Flowers

March 14th • Weaver Writing Modified
– Thomas Burns

May 9th • Contemporary Romans w/ Pencils
– Janell Wimberly



*Please join us for our
Annual Valentine Social
and Raffle on Saturday,
February 8th at the
Copeland House located at
Lover's Lane United
Methodist Church from
10:00am to noon.*

*Bring one handmade
valentine per person to swap.
(Copeland House is located in
the northeast corner of the
parking lot.)*



Thank you to Our Volunteers

January Program Review
Monica Winters

January Mini-Workshop Review
Jeri Wright

*Contributors:
Randy Stewart
Brenda Burns
Thomas Burns
Sherry Barber*

BOARD MEMBERS

Executive Board

President	Jeri Wright
Vice President	Suzanne Levy
Treasurer	June Baty
Secretary	Nettie Richardson

Chairpersons

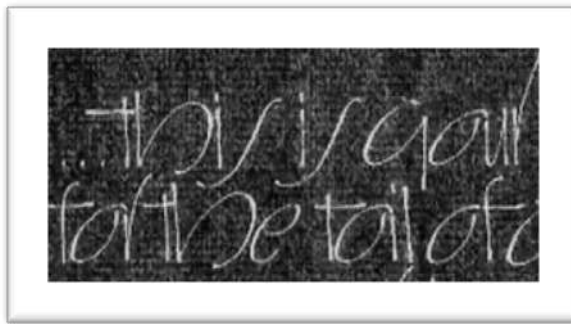
Website/	Sherry Barber
Communications	Margaret Mall
Exhibits	Brenda Burns
Fund Raising	Eric Doerr
Membership	Trish Manche
Newsletter	Rick Garlington
Programs	Betty Barna
Workshops	

Kaligrafos Mini Workshops for 2019-2020

These will be held on the second Saturday afternoons from 1-4pm in the same room as our regular meeting place. Take a quick lunch break or bring your lunch. Our venue offers lots of space for many participants and you are already there!

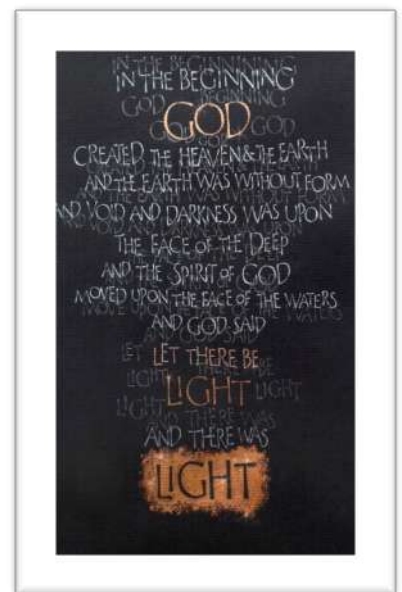
The cost is \$25 per mini workshop, sign up at the next meeting.

March 14th, 2020: Thomas Burns teaches his version of Weaver Writing. Gwen Weaver's influence is still with us and lives on in the people that she taught through those who continue to teach her own pointed pen alphabet.



May 9th, 2020: Janell Wimberly will teach Contemporary Romans with a pencil.

Many of us have taken Janell's Romans, but this is slightly different and will guide us through how the pencil makes its humble contribution to our letter forms.



Review of Carrioka with Thomas Burns

By Monica Winters

The members of Kaligrafos who braved the snowy and blustery elements to attend the January meeting – and there were surprisingly quite a few of us determined souls – were rewarded with the chance to observe a “Dance with the Star” of a new and innovative calligraphic style aptly demonstrated by our knowledgeable and energetic Thomas Burns.

This author was relieved to know that no singing was involved (Carrioka *sounds* like karaoke)!



“Carrioka” is a calligraphic hand style designed by Carrie Imai, calligrapher and author of the book *Dancing Pen*. The form’s style is chunky, much like the thick and heavy *Neuland*, but don’t be fooled into thinking that broad and heavy is simple to recreate. “Carrioka” dances on the page, boldly and seductively, requiring a bit of stretching, bending, twisting and toe-pointing, with a dramatic dip here and there.



After taking a workshop from the calligrapher/author in which she taught the way to formulate letters by manipulating the pen, Tom expertly demonstrated the process for his audience, emphasizing the skill required to hold and turn and twist the pen to create the forms, much like “dancing” with the pen across the surface of the paper. He emphasized that the pen must be perpendicular to the paper surface; and the arm cannot float but must rest against the surface to ensure strength and sureness of

strokes. He further explained that as this hand is bold and broad, it is most suitable for emphasis in overall design, but it would be worth experimenting a full written page in the hand to test its readability in bulk. He also assured us that he received permission from his presenter to give instruction on the style.

Tom presented the participants (assisted by his lovely sidekick, Brenda) with an exemplar written in Walnut

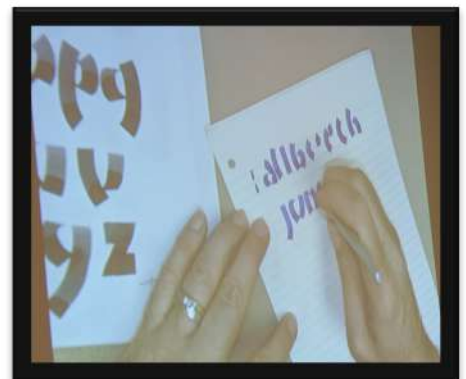
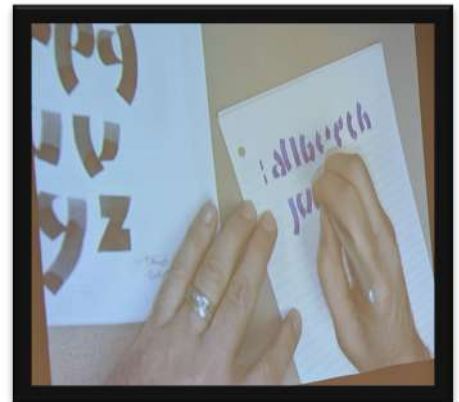
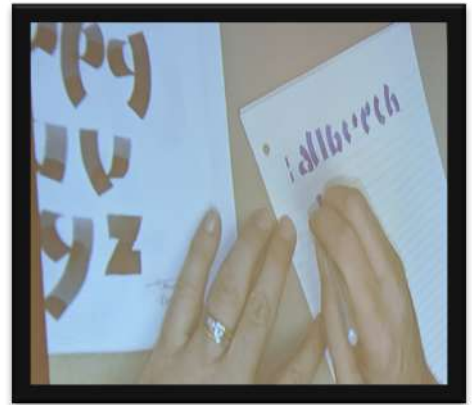


ink to show the overlaps that occur in the “dancing” strokes. There are two version of the alphabets: one bold and chunky, and the other lightened a bit with the use of curlicue-like details. An exercise in design consideration would be to combine the two styles (which Tom demonstrated later making door prizes by writing each winner’s names on placards, which were folded cards with a watercolor flower cutout extending beyond the top of the fold.).

Your partner in this dance, Tom went on, would be to have a pen that writes on its corner, such as a parallel pen, to be able to create the curlicue-like lines without having to stop and change pens (destroying the continuity of movement). There are no straight lines in this alphabet, and the rehearsal requires the cushioning of a pad of paper underneath to ease the movements. Tom additionally cautioned us against “white-knuckling” the dance. Yes, it feels awkward at first, but isn’t anything truly innovative worth the effort to learn the steps?

Tom peppered his performance with occasional general tips for his fellow calligraphers and wannabe scribes: A Craft Mat, available at Hobby Lobby, which has a slick and non-absorbent surface, works well for spreading or splattering ink or watercolor and then to press (much like a monoprint) a sheet of paper on the wet mat to create abstract colorations or splatters for a background. The beauty of the Craft Mat is (besides being inexpensive) that it can be rolled up (unlike a piece of glass) and cleaned. Also, at his new job at Madness, Games and Comics, Tom discovered “Underwear for Your Hands”, an open-fingered glove to protect your surface while writing, complete with elastic and flaps like men’s briefs. Something to lighten the load of a long day of calligraphing.

We are looking forward to March, when we can learn Weaver writing. Tom showed us an envelope he created utilizing and combining the styles of Carrioka and Weaver writing. It was skillfully designed and executed, of course, to tantalize us.



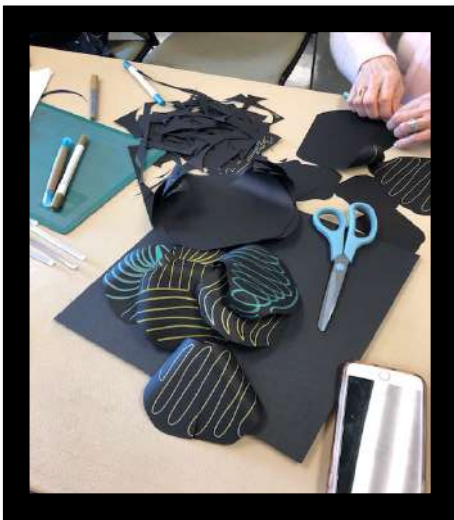
Pen twisting angles

Review of Paper Sculpture Flowers with RafiQ Salleh-Flowers

By Jeri Wright

Our second mini workshop of the guild year was presented by member, RafiQ Sellah-Flowers. This version of sculptured flowers was designed by RafiQ and was generously offered to the members in a three-hour workshop on a cold and snowy morning on January 11th.

RafiQ began by passing out cut sheets of 65# Astrobright black cover stock paper. Each participant was given precut sheets of this paper in the following sizes: 11 (8 ½ x 5 1/2" size sheets), 11 (4 ¼ x 5 ½" size sheets), and 8 (4 ¼" x 2 6/8"). So that's a half sheet of a standard 8 ½ x 11 sheet, then half that for the next size, then half that for the smallest size.



We drew in pencil a petal shape on the sheets (9 large, 9 medium, 6 small), and cut them out. Ultimately this resulted in three different sizes of petals after they were cut out. We were encouraged to décorate them (one side only, and upper 1/3 of the petal only) in any fashion we wanted using paint, ink, white pens, gel pens, colored pencils, etc. When all the decorating was completed, we used a pencil to lightly curl the petal edges.

After that was completed, we cut out the leaves. Using the remaining sheets, we folded them in half (lengthwise) and cut out a leaf shape, then cut out notches on the outside. The leaves were also embellished.

One inch cuts were made on the fold which allowed for the petal/leaf to be molded into a curved shape. This was accomplished using a glue gun. The petals were then glued to a round paper base, layering around in a circle. RafiQ then showed us how to make a spiral for the center of the flowers.

We had enough petals to make two flowers, one large and one smaller. The flowers were then glued onto a 12" x 12" piece of black foam core, with the leaves glued around them, camouflaging the foam core base.



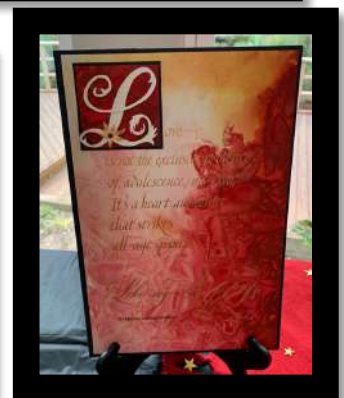
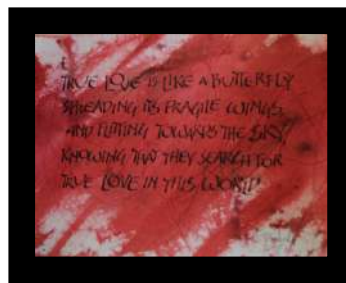


It was such fun to see how everyone decorated their flowers and how beautifully they all turned out. I predict that most of the participants will be making more of these lovely flowers at home. RafiQ will be posting YouTube instructions and will pass on the video title to the members. Our thanks to RafiQ for sharing his time and creative talents with Kaligrafos

Have you subscribed to the Kaligrafos Blog?

Our newsletter content is transitioning to a blog format beginning in August. You can sign up at www.Kaligrafos.com. On the Kaligrafos Homepage, click on Blog, then subscribe with your email address on the blog page. After subscribing you must confirm, look for this email in your spam or Social folders.

A Look Back at Valentines from Years Gone By



Practice Time Compiled by Randy Stewart

Thanks for teaching me
the meaning of Plethora.
It means a lot.

*Try every day to make at least
one step toward your goal.
Over time, you'll find you've
made incredible progress.*

*We promise fast service no matter
how long it takes.
Sign in restaurant*

*The Difference between
winning and losing is
most often not quitting.
Walt Disney*

Engineer.
I am not arguing.
**I am just explaining why
I am right.**
**Effort only fully releases its
reward after a person refuses
to quit. Napoleon Hill**

Courage doesn't always roar. Sometimes courage is the quiet voice at the end of the day saying 'I will try again.' Mary Anne Radmacher

Progress isn't made by early risers. It's made by lazy men trying to find easier ways to do something. Robert Heinlein

*You can discover what your enemy fears most by observing the means he uses to frighten you.
Eric Hoffer*

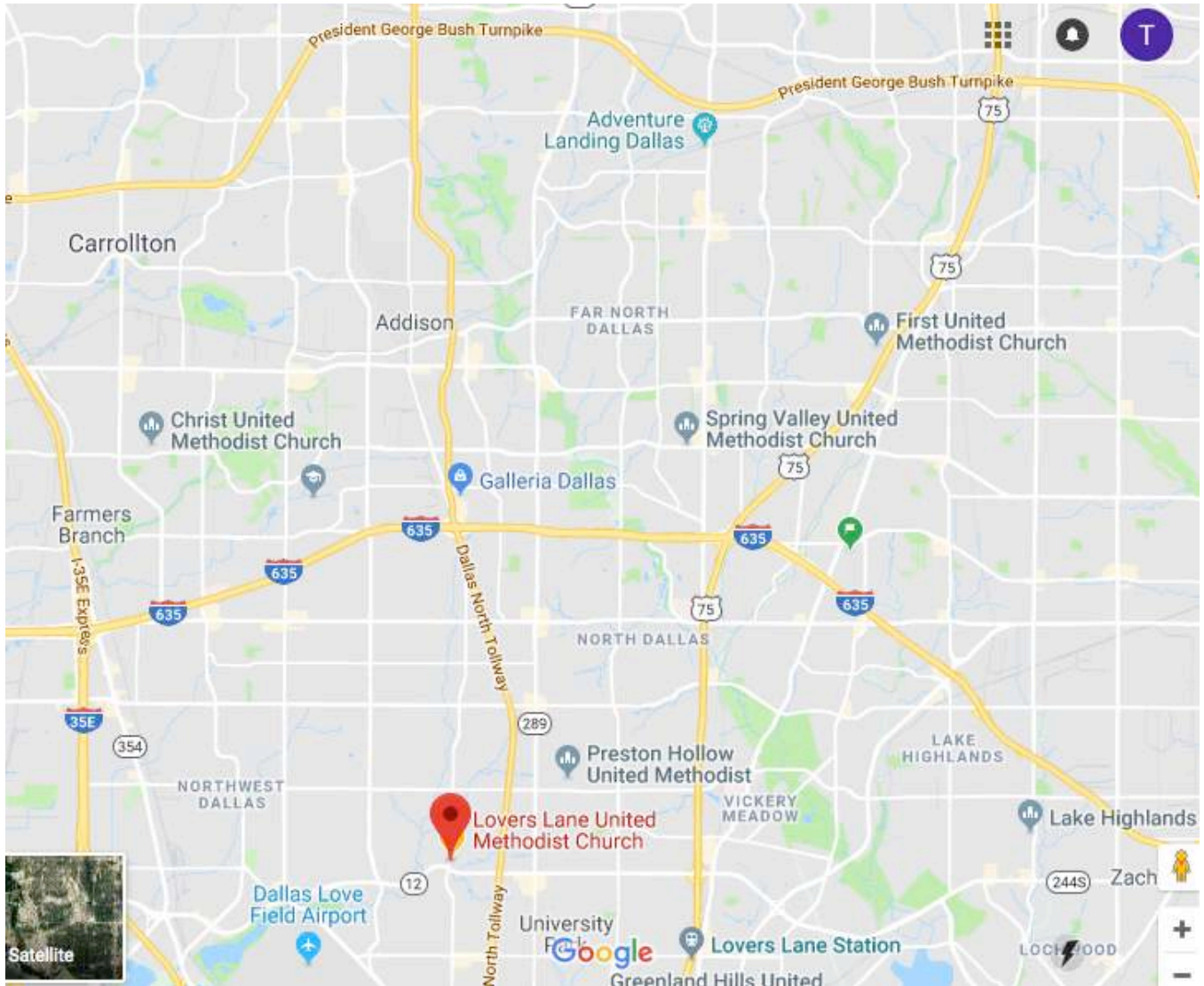
God is the kind of person who sticks out in a crowd. Jim Allman

Mother's Day Cards created by Members



Map for Valentine Social

Copeland House
Lover's Lane United Methodist Church
9200 Inwood Road
Dallas, TX 75220



- When you arrive at the church, drive to the northeast corner of the church parking lot. The Copeland House is in that area and there is plenty of parking out in front.
- Proceed up the stairs/ramp and into the house.
 - Food and Raffles will be to your left.
 - Bring your food back and place it on the tables.
 - Raffle tickets may be purchased.
 - Card display room to your right.
 - Take your card to the front of the room and sign up with a number.
 - Place the card with the number next to it on the table.
 - If you would like your piece displayed on a stand, please bring one with you.
 - You are welcome to photograph all participants' projects.

Beginning Italic Calligraphy Feb 2020

Discover the pleasure of calligraphy!

Crafting beautiful letters by hand is the purpose of this engaging class. We will learn the basics of the lovely, popular style called Italic. The workshop includes teacher demonstrations, instruction on the use of cartridge pens, inks, guidelines, optimal working conditions, feedback on student work and detailed instruction for all 26 minuscules (lower case letters). A small project will conclude our time together. Perfect also as a refresher course to improve your Italic hand.

Supply kit fee of \$35 to be paid to instructor at beginning of class.

Sign up here:

<https://www.amilia.com/store/en/craftguild/api/Activity/Detail?activityId=xYq1D2x>

Sun, Feb 16, 2020

10:00 am - 5:00 pm

Craft Guild Dallas

3410 Midcourt Rd, Carrollton, TX 75006

Email: info@craftguildofdallas.org


www.carolscalligraphyart.com




Kaligrafos


Calligraphy Guild

Membership fees:

 \$25.00 Single

 \$35.00 Family

Make checks payable to "Kaligrafos"

 Mail completed form and check to membership chairman at:

Kaligrafos Membership
P.O. Box 831118
Richardson, TX 75083

Date of Application MM/DD/YYYY: _____/_____/_____

Name: _____

Address: _____

City, State & Zip Code: _____

Phone Number: _____

Email: _____

Birth date MM/DD: _____/_____

Kaligrafos is a non-profit organization created for the benefit and ongoing enrichment of its members. The more you get involved, the more you benefit. Volunteer – you'll meet some really neat people! Please check items below that you would be interested in helping with to support the guild that gives you a place to grow and learn.

- | | | |
|---|------------------------------------|---------------------------------------|
| <input type="checkbox"/> Communications | <input type="checkbox"/> Exhibits | <input type="checkbox"/> Fund Raising |
| <input type="checkbox"/> Historical | <input type="checkbox"/> Library | <input type="checkbox"/> Membership |
| <input type="checkbox"/> Newsletter | <input type="checkbox"/> Programs | <input type="checkbox"/> Workshops |
| <input type="checkbox"/> Refreshments | <input type="checkbox"/> Lettering | <input type="checkbox"/> _____ |