

CALLIGRAPHY **foS**

GUILD

CALLIGRAPHY

*Annual
Valentine*

Social

&

Raffle

*Serenity House,
Lover's Lane UMC*

President's Letter



*"We Ink 'em Up!"
Presidential Seal By Janell Wimberly*

Hello Kaligrafos members,

Our annual Valentine social is just days away. Trish Manche has been doing a lot of hard work to make this event a fun and beautiful day for each of us. Brenda Burns is in charge of this year's raffle and has so many wonderful items that will be available for our drawings. Margaret Mall as well has been arranging for food items to be furnished from various members. And a thanks to Tom Burns for penning the lovely invitation this year. I

hope you are planning on joining us for our "Paper Moon" Valentine social. Bring your handmade valentine for the exchange and receive one from another talented calligrapher in the group.

Our first card making day was held on Saturday, January 19th at my home studio. Seven enthusiastic and talented members joined me and churned out a total of 70 Mother's Day cards that will be taken to the Genesis Woman's Shelter in early May. It was a fun day and not only were cards produced but it was a time of great fellowship where new members were welcomed, new friendships forged, and a general camaraderie was enjoyed by all. My personal thanks to Virginia Littlepage, Brenda Burns, Tom Burns, June Baty, Autumn Swindoll, June Leschek, and Trish Manche. What a wonderful variety of cards were turned out. So we are halfway (I made 5 more) to our goal of 150 cards. There will be one more card making day at the end of March and I hope you will consider making this one of your ways to volunteer for the guild and be part of this community project.

A big thank you to all who are embellishing the paper rounds for our upcoming Tree Whispers exhibit. I am in awe of all the beautiful rounds that have been turned in so far. You've only to walk outside to be encouraged by nature for your next idea.

Our next major workshop will be held in April, the weekend of the 27th and 28th, with Roann Mathias. Her calligraphic artwork is stunning.....colorful, bold and playful.... and it is sure to be a weekend filled with many new methods, ideas and ways for us to stretch our talents and create some beautiful pieces. If you haven't signed up already, give it strong consideration. Check out her blog at <http://roanndesigns.blogspot.com/> or on Facebook at Roann Mathias Calligraphy and Design to see some of her beautiful works.

Jeri Wright
Kaligrafos President



**See next page for
this month's meeting.**

General Meetings Schedule

February 9th • Annual Valentine Social & Raffle at Lover's Lane UMC – Serenity House

March 9th • Paper Aging & Its Many Uses – Janelle Wimberly

April 13th • Blackletter, a Year Long Study – Cynthia Stiles

May 11th • Photoshop Digitalizing - Sherry Barber

Workshops

April 27th & 28th • Layering with Letters – Roann Mathias

October 19th & 20th • TBD – Pam Paulsrud

Mini Workshops

March 9th • Italic Minuscules
Kathy Setina

May 11th • Italic Majuscules
Rita Price

Executive Board

President: Jeri Wright
Vice President: June Baty
Treasurer: Rick Garlington
Secretary: Nettie Richardson

Chairpersons

Communications: Sherry Barber
Exhibits: Margaret Mall
Fundraising: Brenda Burns
Membership: Erik Doerr
Newsletter: Trish Manche
Programs: **OPEN**
Workshops: Betty Barna

Board Meetings

@ Jeri's Studio

March 2, 2019
June 1, 2019

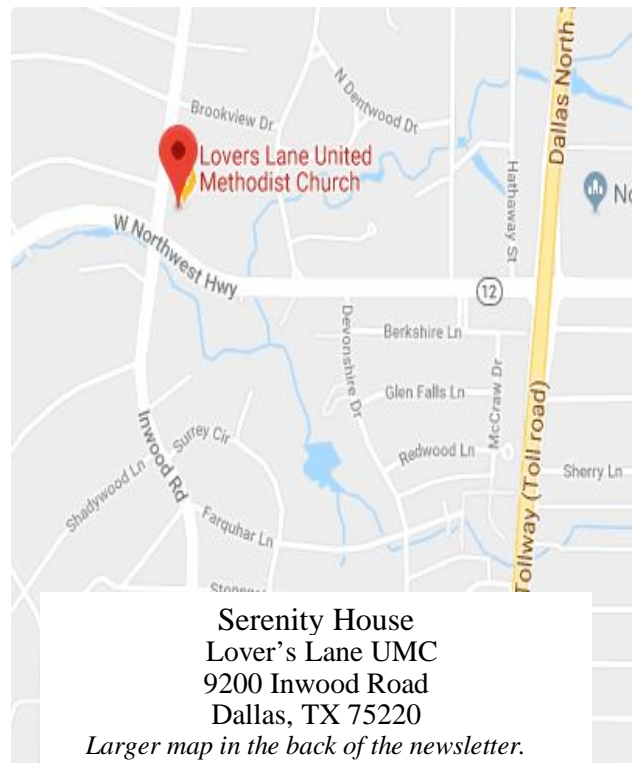
*Welcome New Member
Elizabeth Pirkey*



The Kaligrafos Newsletter is published 9 times yearly in the months of regular meetings. Send art, articles, announcements or comments to newsletter@kaligrafos.com

Please join us for our Annual Valentine Social and Raffle on Saturday, February 9th at the Serenity House located at Lover's Lane United Methodist Church from 10:00am to noon.

Bring one handmade valentine per person to swap. (Serenity House is in the northeast corner of the parking lot.)



Kaligrafos Mini Workshops for 2018 - 2019

These will all be held on the second Saturday afternoons from 1:00pm to 4:00 pm in the same room as our regular meeting place. Take a quick lunch break or bring your lunch. Our venue offers lots of space for many participants and you are already there!

The cost will be \$25.00 per mini workshop – sign up today!

See Betty Barna at a meeting to sign up or just pop a check in the mail to her.



Italic Minuscule with Kathy Setina March 9th 2019

Kathy will take you through the broad-edged pen strokes of this lovely and versatile lower case alphabet. Come and learn or stay to sharpen your skills.



Italic Majuscules with Rita Price May 11th 2019

Now that you have learned the lower case, come back and let Rita show you the show stopping upper case letters for the Italic alphabet.

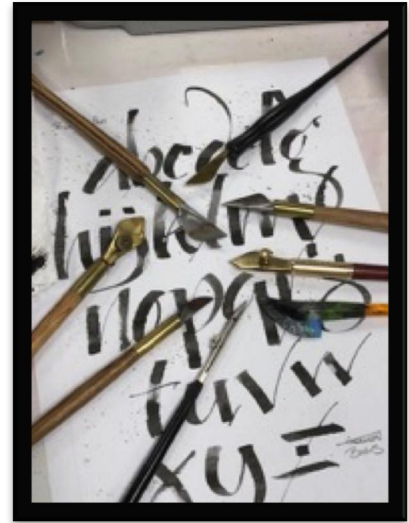
Some supplies may be provided, but lists will be sent out prior to each workshop for those participating.

Review of The Ruling Pen with Thomas Burns

By Suzanne Levy

In the beginning...the ruling pen was a draftsman's pen, used by cartographers, engineers, and others to simply render straight lines. Frederick Poppell was the first to use the pen for lettering. Still, it is a tool in which you choose the way you wish to use it. It has a small knob which adjusts the spacing, but calligraphers keep the two sides closed. Building on Poppell's innovation, Brody Neuschwander created a number of very fine ruling pens for calligraphy.

A variation is the folded pen which is knobless, but similar in effect to the traditional ruling pen. These can be purchased from John Neal Booksellers or made by hand from old, sturdier aluminum cans. In the magazine *Bound & Lettered*, Volume 5, Number 2, are examples of three types (from large to small): the Butterfly, the Moth, and the Firefly. Tom recommends the type of folding pen that has a rounded edge on the bottom part rather than a sharp-angled edge.



Some important principles:

- An exemplar is unique to the person who makes it. Unlike other “strict” hands, you take your knowledge of other hands and adapt them. Be fluid—you can't replicate the exact lines.
 - You are learning a tool, not a hand. You have to control the tool; don't let the tool control you.
- Use a hard surface, not cushioned, in order to allow the ink to splatter. This adds to the “wild,” gestural effect which Tom loves.
 - Find your own grip. Tom often holds his thumb and forefinger firmly on the barrel, then changes when necessary.
 - When designing artistic compositions, use this bold ruling pen technique with other hands, usually not alone. Use it as a focal point or background—unless your work is more controlled and less gestural.



Recommendations:

BOOK: *Mastering Calligraphy* by Gaye Godfrey-Nichols

INK: Besides the wonder-working walnut ink, Tom recommends fountain pen ink such as Pelikan 4001 and Akkerman Ink. Using ink with a sheen works well.

PAPER: Arches is always good, but experiment with different types.

PENS: John Neal Booksellers has many ruling, folded and automatic pens. One amazing line of pens they carry is “Dreaming Dogs.”

CALLIGRAPHERS: Michael Clark, Rachel Yallop, Paul Antonio, Jim Chin, Brody Neuenschwander —worth looking at their work for inspiration.



Tom taught us well, providing some great exemplars, lots of butcher paper for practice, and clear instruction. We are further equipped to produce some awesome calligraphy. Let's do this!

Meeting Highlights

- Jeri Wright announced the 2 cardmaking dates to make Mother's Day cards for the Genesis Women's Shelter project. The first was on January 19. The next is March 30 at her Lewisville studio. Check with Jeri to see if there are any remaining seats of the 10 slots open as seating is limited. The time is from 10:00 am-3:00 pm. 150 cards are needed. If unable to attend the cardmaking date, card makers are encouraged to make cards at home and bring them to the March meeting.
- Jeri shared the launch of a new digital magazine called Calligraphy Crush. The e-magazine was started by Maureen Vickery and Erica McPhee. It is only available to iPad and iPhone users. No Android format is available. Single edition and annual subscriptions are available at www.calligraphycrush.com
- Kaligrafos is in need of volunteers on each committee. The Programs committee, Workshops, Newsletter, Membership, Exhibits and Fundraising are actively seeking members to work with them. All members are encouraged to please volunteer in any of these areas.
- Autumn Swindoll is working with Sherry Barber revamp our social media accounts. They want to help bring more attention to the Guild and to highlight work that members are doing either professionally or personally by highlighting or featuring them on our social media networks. Any member interested in being highlighted can see Autumn or Sherry for more information.

Nettie Richardson

Review of The Ruling Pen with a Drop of Color, Thomas Burns

By Jeri Wright

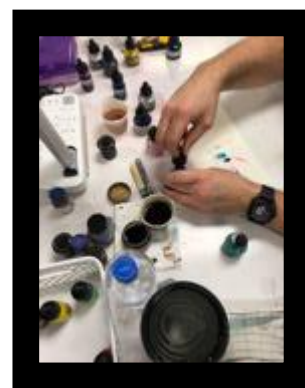
Our January mini workshop was taught by Thomas Burns, expanding on the program he presented on the Ruling Pen and using drop in color to letter.

Tom had several examples of his ruling pen work on display for us to view and shared the different types of ruling pens he uses on a regular basis. The original ruling pen was used by draftsmen and has a very different look than the ‘modern’ ruling pens of today. He especially likes one that was created by Brody Neuenschwander. It can produce three varied size marks and has an exceptional ‘spray’ or ‘splatter’ of the medium which can be the result of a fast movement of the pen on paper, and adds wonderful interest to the art piece. The type of paper you use will net varied results as well. Rough paper gives more of the spray from the pen as it chatters across the paper, where smooth paper gives a more consistent mark.

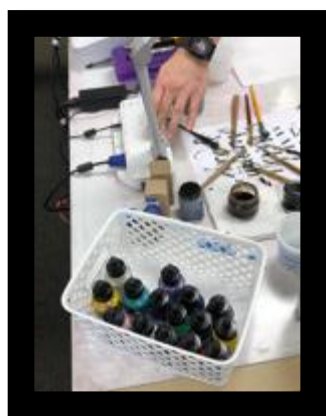


There seems to be a variety of ways to hold the ruling pen. Tom demonstrated his preferred pen hold and encouraged the class to try different ways to hold the instrument and to see the different results by doing so. Each person should find their own way with the tool. We used highly diluted walnut ink (otherwise termed ‘dirty water’) as a base for our letters. It is best to keep the lettering quite wet so that color can be dropped in to create a combination of complimentary colors, while avoiding a color referred to as mud! It is suggested that you work on only one to two letters at a time to prevent the ink from drying before dropping in

other colors. Some examples of drop in colors would be: FW Martin concentrated watercolor in bottles, metallic inks, fountain pen inks, Pelikan 4001 ink or Adirondack alcohol inks. These are some that we experimented with, but I’m sure there are others.



Tom explained that the Ruling Pen is a technique, not a lettering style. No two strokes will ever be the same. One should experiment using various exemplars they might have or find in books and create their own letters. This type of lettering is best exhibited or displayed as a highlight or prominent word in a calligraphic art piece.



He also introduced some folded pens, showing the difference in their structure and how they work.

Thank you, Tom, for sharing your talent with this tool that has been a mystery to so many. As is always said by the many lettering instructors I’ve had: “Practice, practice and practice some more”. This is a wonderful addition to our calligraphy tool kit! Now, go forth and letter!

Type-In 26 January 2019 - Denton, TX

By Thomas Burns

Last year Amy Walton of **Address Me Dallas** (AMD) contacted **Kaligrafos**, and we participated in their “Wild Detectives” event. In turn, Amy did a program for us at our September 2018 meeting. This year, Sissy Cross from **Lone Star Letter Writers** (LSLW) contacted us (Amy just “happened” to meet up with Sissy and told her about us). Sissy invited us to their event in Denton. This event was similar to AMD’s, but also different. Here’s the twist:

LSLW’s event was a Type-In, co-sponsored by Austin Typewriters, Ink

So, what’s a Type-In you ask? Good question!

According to Wikipedia, it is “an arranged meeting of manual typewriting enthusiasts. A Type-In may include the following activities: a typing speed competition; distribution of stationery, envelopes and stamps, followed by a typed letter-writing session; the swapping and purchasing of typewriters.”



That definition is exactly what happened at the Denton Public Library in December. So many old-school manual (not electric) typewriters were all lined up for anyone to use. There was a speed typing contest and the winner took home a “new” (to them) typewriter. Of course, toss in the **Lone Star Letter Writers** and **Kaligrafos** members addressing envelopes, and everything was complete. Hand-typed letters on a vintage typewriter on beautiful stationery (or not), and the option of having a gorgeously decorated envelope, hand-lettered by June Baty,

Jeri Wright or Thomas Burns—that is, if you could tie Tom down, as he was all over the room chatting and pecking away on the old machines.

The room was packed and the energy exhilarating from all the folks sharing stories, acting goofy and answering questions; all the while the sweet sound of keys hitting the platen. Many machines found new homes that day with excited owners. It was truly a one of a kind experience. You couldn’t help but leave with a smile on your face and the desire to type and write some more once you got home.

Then there was the after party....but that’s a story for another time.

Check out **Austin Typewriter, Ink** and **Lone Star Letter Writers** on social media:

<http://www.austintypewriterink.com> - links here to their Instagram and FB

<https://www.instagram.com/lonestarletterwriters/>



Show & Share

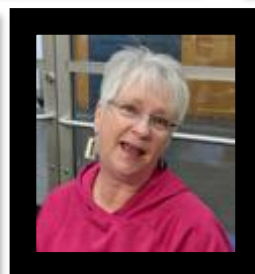


Mothers' Day Card Making in Progress

By Jeri Wright

On a very cold and windy Saturday, 8 members of Kaligrafos met at the Wriorthand2 studio in Lewisville for the first card making session for our community outreach project this year. These eight gathered to begin making Mother's Day cards for the children at the Genesis Women's Shelter to give to their moms on Mother's Day this May. Cards were created by hand with various types of embellishment: stamps, image layering, watercolor, paste paper, etc. Those present were encouraged to decorate the cards using various types of lettering: copperplate, italics, pointed pen uncial, monoline whimsical, etc.

It was a fun time creating, getting to know one another better, and general camaraderie. We shared ideas, techniques, and funny stories. Many thanks to Autumn, June & June, Brenda, Virginia, Trish and Tom.



Many thanks to Jeri Wright for sharing her studio space for this project.





Northern White Oak: AKA Betty Barna

Northern Oak is harvested primarily in Wisconsin, Michigan, Minnesota, Indiana and Canada's eastern provinces. The colder climate creates a slower growing season which results in tighter growth rings in the lumber. This makes the grain finer and more consistent and the color more uniform. Because of its look and because it sands and finishes better than other oaks, Northern Oak is ideal for cabinetry and is sought out by furniture makers.

Native to North America, the White Oak (*Quercus alba*) is a huge and noble hardwood tree that produces edible sweet acorns. This species is rare and endangered in Canada.

I choose this one for possibly obvious reasons – I am from Canada and you can guess the rest. But did you know that oaks cannot reproduce without the help of squirrels who gather the acorns and bury them away from the shade of the oak tree itself. Since they miss gathering some of those that they bury, those acorns have a chance at getting access to the sun that is needed to grow into a tree. As to the edibility of the acorn, I will leave that to the squirrels – it must be an acquired taste that I have not really ever acquired. In Spain, they feed the hogs acorns for 3 weeks before meeting their fate in order to make the meat taste differently – another taste that I have yet to acquire.

But I digress... my story about the squirrels is that it takes more than just the mighty oak to make it all work, just as it takes all of us in our group to make enough rounds and decorate them to make the Tree Whispers exhibit work. We are well on our way, but there will be future parties to decorate the rounds that we have already made and all of us oaks hope that you will participate and join us in making our exhibit a success.

And we won't make you eat any acorns either! Unless you want to!

Practice Time

Compiled by Randy Stewart

Our motto is, "If it's in a frame it will look like art to you!"

You know how you can slap certain things repeatedly to make them work? Don't you wish you could do that with certain people?

The only true wisdom is in knowing you know nothing.
Socrates

Who knew? When someone yells at you to get a grip, apparently around their neck is not what they meant.

If burglars broke into my house I would just laugh and search with them.

The 5 second rule doesn't apply if you have a 2 second dog!
My sister

Three Simple Rules in Life

1. If you do not go after what you want you'll never have it.
2. If you do not ask the answer will always be no.
3. If you do not step forward you will always be in the same place.

He who knows and knows that he knows is a wise man - follow him; He who knows not and knows not that he knows not is a fool - shun him.

Confucius



Roann Mathias is a mixed media artist specializing in calligraphy. She designs greeting cards and calendars for Conception Abbey's Printery House. She teaches calligraphy and mixed media workshops throughout the US and Canada. Her work has been published in *Somerset Studio Magazine*, *Letter Arts Review* and exhibited nationally. She was recently chosen by *Cloth Paper Scissors* magazine as 2012 Artisan of the Year in Art Journaling and Bookmaking.

For the past 30 years she has taken workshops from all the major calligraphers, and has taken Reggie Ezell's Yearlong class 4 times! She was on the faculty of Island Magic conference in 2007, and taught mini-workshops at the Chicago and Dallas conferences.



Layering Letters with Roann Mathias



In this workshop, you will learn how to create multiple layers using text. This kind of layering creates interesting patterns, as well as a sense of depth in your art. Using gesso, acrylic paint and acrylic mediums on paper, we will paint on and scrape out letterforms. Neuland will be the primary style of lettering for this class, so there will be time spent reviewing that hand. We will also use italic, foundational and blackletter to add variety.

April 27th & 28th 2019
Cost: \$150 (this includes a \$15 supply fee)
Place: TBD

Please send your check to Betty Barna, Workshop Chair
Kaligrafos Calligraphy Guild
4212 Valleybrook Drive, Richardson, TX 75082



2018 Best in Show by Garry Jackson Kemble

CALL FOR ENTRIES
~ please distribute ~

Transform an ordinary envelope into a work of art!

Graceful Envelope Contest

2019 Contest Theme:

Put Your Stamp On It

This year's theme celebrates the **25th anniversary** of the **Graceful Envelope Contest** and the **125th anniversary of US commemorative stamps.**

Your challenge is to create an envelope that commemorates anything of your choosing. To "Put Your Stamp On It," make sure your submission reflects the artistic hand lettering and imaginative use of color and design that have been the hallmarks of the contest. And, of course, incorporate postage stamp(s) into your creation.

There is no entry fee.
Entries must be postmarked no later than Monday, March 25, 2019, and addressed artistically by hand to:

The Graceful Envelope
c/o Washington Calligraphers Guild
P.O. Box 3688
Merrifield, VA 22116

You may enter only one envelope. Entries must be processed and delivered through the U.S. Postal Service as First Class Mail and may not be wrapped in a separate envelope or protective covering (unless multiple entries are coming from one class).

On the BACK of the envelope, print "FROM" and your name, address and email (or teacher's email). Students need to provide their grade, because judges will consider entries in these categories:

- * Adult
- * Grades 9-12
- * Grades 5-8
- * Grades 1-4

Deadline for entries:
March 25, 2019

*See <https://www.calligraphersguild.org/envelope.html> for complete rules.

With questions, contact Erin at peonyplumecalligraphy@gmail.com

The 25th annual Graceful Envelope Contest is sponsored by the Washington Calligraphers Guild and the National Association of Letter Carriers.

For the complete Call for Entries and to view last year's winning envelopes, go to www.calligraphersguild.org.

Winners will be chosen based on calligraphy, creative interpretation of the theme and effective use of color and design, including incorporation of postage stamp(s).

Winning artists will receive certificates and their entries will be displayed online beginning in early June 2019. No prizes will be awarded. Receipt of entries will not be acknowledged and entries will not be returned.



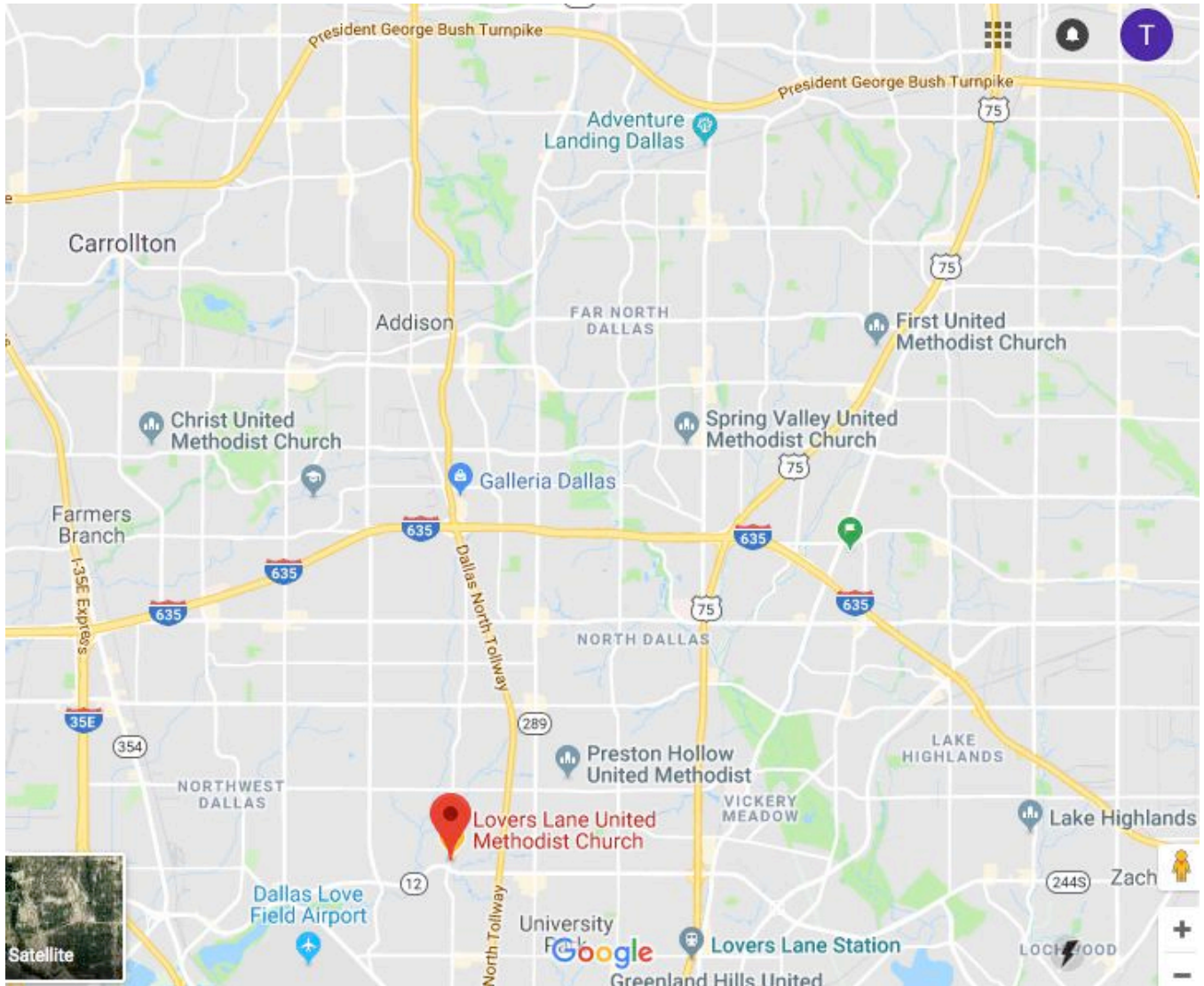
The Washington Calligraphers Guild
www.calligraphersguild.org



National Association of Letter Carriers, AFL-CIO
www.nalc.org | 202-662-2851

Map for Valentine Social

Serenity House
Lover's Lane United Methodist Church
9200 Inwood Road
Dallas, TX 75220




- When you arrive at the church, drive to the northeast corner of the church parking lot. The Serenity House is in that area and there is plenty of parking out in front.
- Proceed up the stairs/ramp and into the house.
 - Food and Raffles will be to your left.
 - Bring your food back and place it on the tables.
 - Raffle tickets may be purchased.
 - Card display room to your right.
 - Take your card to the front of the room and sign up with a number.
 - Place the card with the number next to it on the table.
 - If you would like your piece displayed on a stand, please bring one with you.
 - You are welcome to photograph all participants' projects.


Kaligrafos

Calligraphy Guild


There is still time to join for 2018-2019

Membership fees:

 \$25.00 Single

 \$35.00 Family

Make checks payable to "Kaligrafos"

 Mail completed form and check to membership chairman at:

Kaligrafos Membership
P.O. Box 831118
Richardson, TX 75083

Date of Application MM/DD/YYYY: _____/_____/_____

Name: _____

Address: _____

City, State & Zip Code: _____

Phone Number: _____

Email: _____

Birth date MM/DD: _____/_____

Kaligrafos is a non-profit organization created for the benefit and ongoing enrichment of its members. The more you get involved, the more you benefit. Volunteer – you'll meet some really neat people! Please check items below that you would be interested in helping with to support the guild that gives you a place to grow and learn.

- | | | |
|---|------------------------------------|---------------------------------------|
| <input type="checkbox"/> Communications | <input type="checkbox"/> Exhibits | <input type="checkbox"/> Fund Raising |
| <input type="checkbox"/> Historical | <input type="checkbox"/> Library | <input type="checkbox"/> Membership |
| <input type="checkbox"/> Newsletter | <input type="checkbox"/> Programs | <input type="checkbox"/> Workshops |
| <input type="checkbox"/> Refreshments | <input type="checkbox"/> Lettering | <input type="checkbox"/> _____ |