

# KWALLIGRAPHOS

GUILD

CALLIGRAPHY



# President's Letter



**"We Ink 'em Up!"**  
*Presidential Seal By Janell Wimberly*

Fantastic, Fanatic, Fearless, February .....

Not for the faint of heart is Valentine's Day. As the arrows fly out of Cupid's quiver be on your toes so you can dodge and weave your way around them, otherwise be prepared to fall head over heels for that special lady or beau. It is magic and sparks that can turn into an awe inspiring fireworks display. And for all of us that love of letters pours onto the page in an elegant fashion that puts the best rose bouquet to shame. As what we write lasts forever! A simple hand

written note to your "secret" lover will sweep them off their feet.

We have a new venue for the Valentine's Social this year. It's at LLUMC but in the Serenity House. The setting is eloquent and you will not want to miss the shindig of the year! No boring business meeting, but oohing and aahing over the gorgeous hand made cards and catching up with friends. Don't forget your handmade card to "trade" (one card per person). The raffle will be spot light again this year with great items up for grabs. Bring your moolah, in the form of cash, check or plastic, to get your tickets!

Upcoming we have our Spring Exhibit at the Artist's Showplace. Have you started your piece yet? I have....well, the design is complete and I've been practicing my letters but have not put it all together yet. Let's make Spring Bloom!

This Summer we have an Exhibit at LLUMC. Break out your BIG brushes and let's letter up some HUGE pieces to fill the walls! Nothing is too big for that space. What about doing a collaborative piece? Who's game? Take charge and make it happen. All you have to do is ask some of your fellow letterer's.

Spring Workshop - Risa Gettler - Visigoth Versals - OMGosh - you don't want to miss this. Signup has begun but I'm pretty sure there are spots still available. Be sure to follow her on Facebook. I have my seat....do you?

Volunteering isn't just donating time to the guild, it's a way to get to know your fellow letter lovers and build friendships that can last a life time. It doesn't matter if you're a new member or a seasoned veteran there is always someone new to meet and nurturing the guild to further educating folks is an added bonus. Feel free to seek me out or any of the current chairmans for opportunities.

Roses are Red, Violets are Blue, Letters of Love, All for you!

Thomas Burns



General Meetings 2<sup>nd</sup> Saturdays at 10:00am – noon

Come early to socialize 9:30am to 10:00am

Meeting Location

**Lovers Lane United Methodist Church**

**9200 Inwood Road, Dallas, TX 75220**

*This month we are meeting on the church campus  
at Serenity House. See next page for map.*

---

#### Workshops

**April 29-30** Risa Gettler • Visigoth Versals

**Sept 30-Oct 1** Yves Letterme • TBD

#### Mini Workshops\*

**Feb 25** - Betty Barna - Italic

**March 25** – Linda Jones – Italic

\*These are 3 hour sessions in the member's home - unless otherwise notified. Must sign up and if too many are interested, there will be a random drawing for the available slots OR a possible second session.

#### Board Meetings

**Feb 25 1:00pm** • Margaret's Place

**June 1:00pm** • Javier's Place

*Soon the committee chairs will start planning programs / workshops for next year. Is there something you would like to see or share? Please let us know.*

#### BOARD MEMBERS

*President:*

Thomas Burns

*Vice President:*

Betty Barna

*Treasurer:*

Rick Garlington

*Secretary:*

Jeri Wright

*Exhibits:*

Margaret Mall

*Historian:*

Randy Stewart

*Library:*

Brenda Burns

*Membership:*

Eric Doerr

*Newsletter:*

Trish Manche

*Programs:*

Cynthia Stiles

*Fund Raising:*

Javier Mardones-Hermosilla

*Communications & Workshops:*

Sherry Barber

The Kaligrafos Newsletter is published 9 times yearly in the months of regular meetings. Send art, articles, announcements or comments by [clicking here](#).

Join us for our February Program

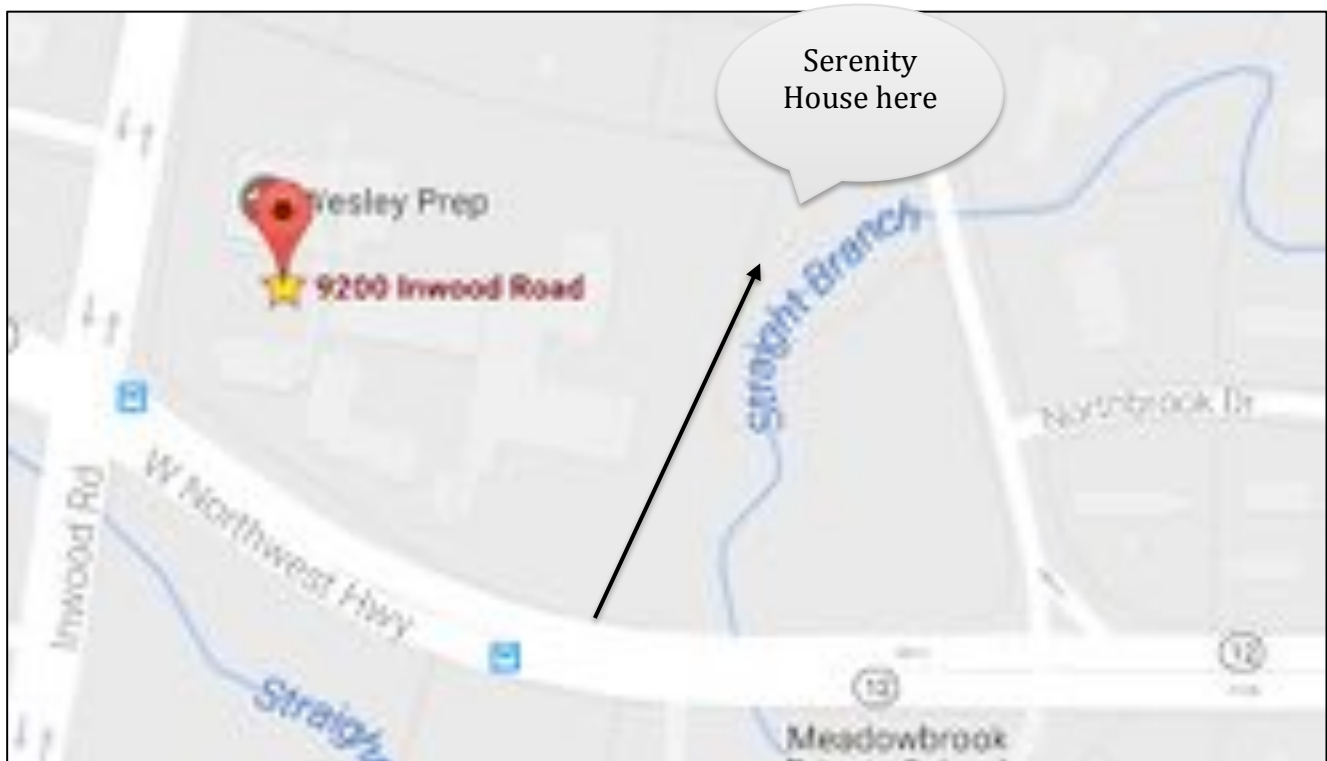
**Kaligrafos Annual Valentine Social – February 11<sup>th</sup>  
The Serenity House, Lover's Lane United Methodist Church**

*In February*, bring your beautiful handmade valentine for this special event to exchange. In return, you'll take home a unique creation by another member for your very own. All skill levels, arts, and crafts welcome. Bring your camera!! It's lots of fun and you won't want to miss this!

There will be raffle items to bid on so come prepared for these treasures. Raffle tickets are \$2.00 each or 6 tickets for \$10.00 .

---

### Map to Serenity House At Lover's Lane UMC



Enter the parking lot from Northwest Highway on the east side. The Serenity House is near the back corner of the parking lot.

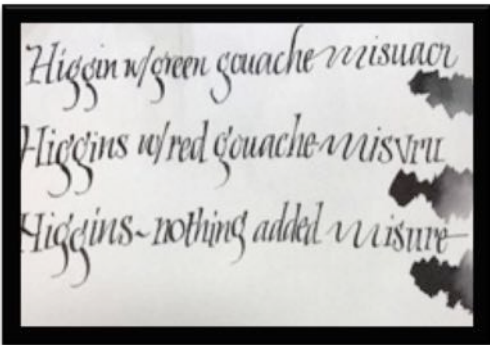
# An Ink by Any Other Name by Janell Wimberly

Review by Anita Hofmeister

Janell's program in January described different ink types and forms, their backgrounds and usage, a truly comprehensive presentation. She also invited members to share their tips on using inks.

Starting out, she said, it is good to have pieces of sample paper to work on and use sandarac to prepare the surface of the paper to receive different types of inks more readily. Using sandarac helps make better hairlines. Rita Price says some may be allergic to sandarac as it is a plant resin.

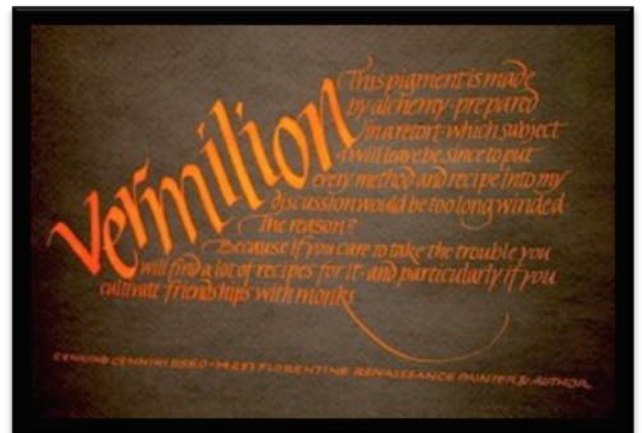
Janell began with pigment based inks. Gouache, an opaque watercolor, is one of Sherry Barber's favorites. She said to mix enough water to make it flow through the pen, and that gouache can be used on about anything. With each color Sherry uses a different brush that she doesn't wash out. This saves costly gouache from



being rinsed away and the brush is ready with that color for the next time. Janell's go-to ink is Higgins Eternal and adding gouache to it makes better hairlines. Turner gouache is her favorite to use. She informed us to be careful of colors that fade, especially the reds and purples of Winsor and Newton.



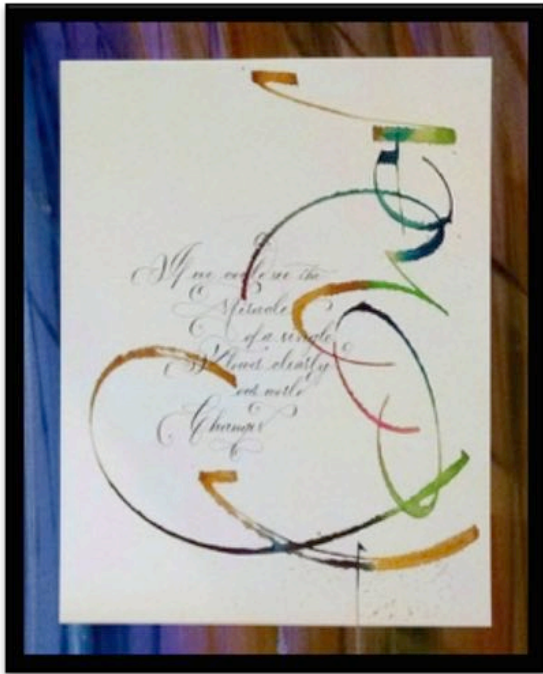
On to sumi inks, Moon Palace is excellent for lettering and can be thinned. Bokuju, Janell said, is shiny when dry and may have shellac which makes it terrible for nibs. Sumi ink also comes in stick form and is expensive. Rita Price talked about a piece she did in vermilion. Vermillion is a sumi ink in a beautiful red-orange color. Rita thought it would be fun to do a whole project in vermilion, since many instructors say not to! She used Pro White to help the ink show up on her black paper. Her piece was delightful! Here is an experiment you may want to try: Janell says to mix vermilion with black sumi to get variations of brown.



Vermilion piece by Rita Price

India ink has shellac and is waterproof. This makes it hard on pens and nibs. You never want to use this type of ink in a fountain pen. A bit of historic fact Janell gave us is that India ink is a misnomer as it came from China through India, so it did not originate in India.

Traditional iron gall ink was the ink of choice for documentation from the Middle Ages to the twentieth century. And, as we have seen on some historical works, it eats through paper. Janell says makers of the formula have changed it so that it isn't so acidic. If you are wanting to do a true historic piece, this is the ink to use.



*Piece by Tom Burns with Walnut Ink.*

Walnut ink is acidic also, and you can use a neutralizing spray to help it. Janell likes to buy the walnut crystals and mix as dark or light as she wants rather than buying the

ready-made stuff. She mixes it with boiling distilled water. Thomas Burns uses walnut ink for everything as it is his go-to ink. He has done some beautiful calligraphy with it. He says the ink is always better the next day after mixing. The inks discussed above are pigment type inks. Other types of ink can be dye based. Noodler's ink is dye based. The difference is that dye doesn't wash off of your hands and it cannot be corrected because it sinks into the paper.



FW makes basic and pearlescent acrylic based inks. Janell likes to use the pearlescent inks with a brush. Powdered inks are very versatile, this is what people use who make their own pastels and oil paints.



*Believe in Button Alphabet with Pearl Ex mix by Tom Burns*

For making your own ink for calligraphic purposes, use an unglazed cup with a grinding tool. Powdered inks need a binder so use some gum arabic for this, and use distilled water to make it the consistency that you need. “Always use distilled water!” says Janell.



*Unglazed cup used for mixing.*

When using color stick ink you don't need to use a binder as it already has it. Grind the stick in an unglazed dish with some water. Janell uses a double sided dish with one side for making light colored inks and the other for dark. Keep grinding until the ink starts to make a little path when you pass the stick through it, then you know it's ready. To use the ink, she applies it to her pen nib with a brush. When someone asked, “Why use stick ink?” Janell said “Stick ink is what was used on the Dead Sea scrolls.” If you need stick ink, you can go online and find all kinds. If you have used up your stick until it's too short to handle, you can find a bamboo extender at John Neal Bookseller.

Janell encouraged us to make a sample of our inks on our favorite papers. Doing this test will help you see which of the inks are more permanent and which are fugitive as well as the effect it has on the papers.

Place thick black card stock over half of your inks and expose them to light over an extended period of time to see how much the ink and paper fades.



*Example of Fugitive Test*

We are so grateful to you, Janell, for giving us so much to take away! Thank you for such a practical and beneficial program!



## Review of Ruling Pen Workshop with Rick Garlington

Review by Trish Manche

I attended the first session of Rick's Ruling Pen Workshop on Saturday, January 21<sup>st</sup> with Rick Garlington. In usual Rick style, he provided almost everything we needed to learn to write with a ruling pen. We started making marks with a "cola" pen and walnut ink. It was easier than I expected and soon all of us were writing letters and words.

Rick provided a variety of exemplars for future use when practicing as well as instructions on how to make our own "cola" pen. He demonstrated writing with light walnut ink and dropping in color. For a variation,

he mentioned this same technique dropping in color can be used with dirty water. He had a beautiful piece with this technique that he shared.

We all had the opportunity to take a piece of watercolor paper and try it for ourselves. He pulled out his regular ruling pen and let us pass it around to try it out. Myself as well as a few others just had to order one for ourselves. It was a very fun workshop and very educational.

Thank you Rick for opening your home to teach this workshop!

---

## *Meeting Highlights*

*Submitted by Jeri Wright, Secretary*

- With sadness, it was announced that Kaligrafos member, Nanci Inman, passed away in late November.
- Valentine Social invitations were passed out to members present at meeting. The others will be mailed. Several items have been donated to the Raffle that will be held. Location for this event is the Serenity House just past the parking lot (on church property) where we hold our monthly meetings at LLUMC. Date is Saturday, February 11th, from 10:00 a.m. to 12:30 p.m. Bring a hand lettered Valentine and receive one in exchange.
- Three exhibits are currently planned for this year.
  - Artists's showplace 4/1/17 thru 4/18/17. Spring theme - Haikus would be nice.
  - ArtReach Gallery (LLUMC) - God & Country theme - 6/30/17 thru 8/4/17.
  - Masterpiece Gallery in Frisco - 9/8/17 thru 10/28/17 - more info will be announced
- Guild member volunteers are always needed. Don't know how or where you can help? Just ask! The board members are happy to assist you. Kaligrafos is a great place to meet new friends and volunteering is a great way to do that.



# Harvey's Helpful Hints

By Harvey Anton

*Please enjoy this "classic" Harvey's Helpful Hints from January 2005*

**The closer a reservoir** is to the tip of a nib the faster the ink will flow — the further back the reservoir is the slower the ink will flow.

**The ruling pen** is a wonderful instrument for drawing lines, but there are rules you must heed — first spread the thumb screw for the width of line you want, fill the nibs with ink with an eyedropper or brush (careful not to get ink in the ruling edge side), hold the instrument vertically with the straight edge tine against the t-square (not the curved side), draw the line the length you want. Voila'!

**Did you know** you can refill felt tip pens? Yep, let the tip sit in the ink of choice overnight — that should do it. Some pens have a removable cap on the opposite end from the tip. Take this cap off and fill the barrel with ink of choice by way of a syringe needle filled with ink of choice. Colored inks work well also, but let the colors penetrate the nib or you'll have black to go with the color you inserted.

**Clean dried ink** from nibs using a #2 pencil lead by rubbing it on the nib. The graphite polishes the metal and helps prevent rusting.

**Always practice on good paper!** Before you start your art piece be sure to use a trial sheet of paper (the same type as your art piece) to see how the ink and nib will react. It's a good idea to purchase at least two sheets of the same paper for this reason.

**And if you pencil line your paper**, line two or three sheets, so that if you err, you can take the next sheet without losing your rhythm.

**And a word on rhythm** — if you like to listen to music while writing put on something soothing other than "hard rock" or "hip-hop" .. After a time you won't even hear the music but will continue the rhythm without even noticing. Rhythm in writing is necessary for smooth, well-rounded letters — the letters will appear to flow right out of the pen!

**Pastel colored inks** can be made by adding Pro-White to transparent watercolors. This ink looks great on dark colored papers!

**Having difficulty opening a stuck cap** from your gouache or watercolor tubes? Unscrew them using a nutcracker (instead of pliers). The nutcracker won't crack the plastic cap as pliers will (trust me). First you might want to run hot water on the cap to help try to loosen the cap before using the nutcracker-cap loosener. And if the gouache has hardened in the tube try setting the entire tube in warm-hot water for a time to help make the gouache pliable. If all else fails don't throw the tube away — cut the bottom of the tube, scrape out the color into a container, add water to reconstitute the gouache. Don't add too much water as the color might become too pale.

**Til next month**, for beautiful writing, peace, harmony and good health!

Harvey Anton: penstaff@verizon.net,  
H) 972-307- 0172, C) 817-470- 2735

# Announcements

## Book Reviews

Are you looking for an opportunity that will help others, fill a need and be more rewarding than you could imagine? The Library Committee wants **YOU!**

We have an extensive library. Your reviews assist members, especially new calligraphers, in making selections to assist them in expanding their knowledge and perfecting their skills.

The reviews will be published in both a future newsletter as well as posted on the Library Thing. For more information, please contact [Brenda Burns](#).

## Donate Cards

Donate your handmade cards to  
Membership Chair, Eric Doerr!

Like Kaligrafos on



## 2016-2017 Membership

Join Kaligrafos Calligraphy Society

- \$25 for individual membership
- \$35 for family membership

### Membership Info

Please send membership changes of your information via email to Eric Doerr

## Library Books

**Reminder** library books are due at the next meeting.

Browse The Library Thing

[Kaligrafos Library Thing](#)

After you pick your titles, email your selection(s) to [library@kaligrafos.com](mailto:library@kaligrafos.com) to be delivered at the next scheduled meeting.

*Please note:*

*When requesting a library book from Brenda, be sure to put in the subject line "Library Book" or "Kaligrafos."*



# Practice Time

Compiled by Randy Stewart

*"Seeing" a spider is not a problem. It becomes a problem when it disappears. Anonymous*

I quit therapy because my analyst was trying to help me behind my back.  
Richard Lewis

*Every family has one weird relative. If you don't know who it is then its probably you.  
Anonymous*

The smaller the mind, the greater the conceit. Aesop

Junk food would be a lot easier to avoid if it actually tasted like junk. Anonymous

*If fifty million people say a foolish thing, it is still a foolish thing.  
Anatole France*

*The things you say about others say a lot about you. Anonymous*

*Think once before you act, twice before you speak and three times before you post on Facebook. Anonymous*

Nothing can be so amusingly arrogant as a young man who has just discovered an old idea and thinks it is his own. Sidney J. Harris

When two men in business always agree, one of them is unnecessary. William Wrigley Jr.

---

## ArtReach Exhibit God & Country

*Thursday, June 29 through Thursday, August 17, 2017*

If you would like to participate please contact Margaret Mall as soon as possible. Please provide your name, email address and a phone number. The deadline to register your art work is June 1. Please send me a high-resolution photo (.jpeg or .png) of your entry (2 each max, please) by email. The name you want used on the title card for your entry, as well as the size of your piece (width first; then height) in inches (framed or not framed or gallery wrapped), the media in which the art work was created and the sales price of the piece.\*

The reception for the God and Country Patriotic art exhibit in the ArtReach Gallery in Watson Hall at Lovers Lane UMC is June 25, 2017. The concert is at 5:00 PM and the BBQ dinner/reception following.

An invitation to this art exhibit AND concert, BBQ dinner reception will be posted on Facebook and will be sent each of you to distribute as you see fit and to post on your website and/or other forms of social media.

### **Volunteers are needed!!!!**

HANG DATE: Thursday, June 28, 2017 from 9 AM until 11 AM

STRIKE DATE: Thursday, August 17, between the hours of 9 and 10:30 AM

- 25% of piece sold benefits the ArtReach Visual Arts Foundation at Lovers Lane UMC and 75% goes to the artist whose work was purchased.

# VISOGOTH VERSALS

## WITH RISA GETTLER

APRIL 29-30, 2017 9:30-4:30



Perhaps you've seen my earlier works at Altamira. I am confident, if I could trace my lineage to paleolithic times, I would have been one that 'wrote' on the cave walls. I write and teach calligraphy art and painting styles from early historic to contemporary writing.

Other than the wheel, what's better than the alphabet?



---

Visogoth Versals with Risa Gettler

April 29-30, 2017

Count me in:

Name \_\_\_\_\_

Phone \_\_\_\_\_

email \_\_\_\_\_

Payment enclosed, \$140



## Glorious Gothicized Italic

Gothicized Italic is an exquisitely lovely hand with historical roots and modern applications. Usually considered more legible than Blackletter, Gothicized Italic also lends a more contemporary touch. This class will cover the basics of the style and offer platforms for soaring into variations. Rudimentary knowledge or experience with broad-edge pen calligraphy is suggested. We will cover all 26 minuscule letters in depth and all the majuscules in brief. Join us for the calligraphic fun!

Tuesdays, 2/21/17, six weeks

Teacher: Carol Measures Scott

Location: 7121 Oaklawn, Sachse, 75048

Time: 1:30 - 3:30 pm or 6:30 - 8:30 pm

Ages: 14 and up

Price:

**Registration deadline - 1/18/17**

\$135 - if paying by cash, check or money order

\$139.22 - if paying online (use this link: [paypal.me/calligraphy](https://www.paypal.me/calligraphy)) Please add a note including your name, full address, phones, and email address.

**Please bring:** 2 pencils, 18" ruler, \*eraser, a few paper towels, apron (or wear old clothes), \*Westwind Graphics Pad (or similar), \*3.8mm Pilot Parallel Pen, \*refill cartridges or preferred ink, a colored pencil

\* items available for purchase from Carol

contact: 214-724-0156, [callicarol@aol.com](mailto:callicarol@aol.com)

**Optional:** note-taking supplies, folder for handouts, your own drink.

**To register by mail:** Please send check or money order for \$135 made out to Carol's Calligraphy along with name, full address, phones, and email address to: Gothicized Italic Class, 7121 Oaklawn, Sachse, TX 75048. \*\*\*Your payment secures your reservation. I am not able to hold spots without payment. Refunds available if your spot is filled from the wait list. No refunds for missed classes.

.....  
Name \_\_\_\_\_ Email \_\_\_\_\_

Full address \_\_\_\_\_ Phone \_\_\_\_\_

Payment: check for \$135 \_\_\_\_\_ (included) or PayPal for \$139.22 \_\_\_\_\_ (please pay by 2/16/17)

***FIRST FRUITS***

***October 2017***

***Goodrich Gallery***

***First United Methodist Church, Dallas***

***1928 Ross Ave. Dallas, TX 75201***

Goodrich Gallery announces an art call for submissions to a juried art competition with the theme, *First Fruits*. The Gallery encourages you to submit your best depiction or interpretation of this theme for inclusion into its October, 2017 exhibition. *First Fruits* will celebrate the gifts and blessings of God which you have personally experienced. From ancient times Scripture tells of celebrations where the people have brought offerings of their first fruits to bless and honor our Lord. What are your fruits or gifts or blessings? We look forward to seeing how your creativity embraces the theme of *First Fruits*!

**ARTISTS:** Please submit up to two entries to the juried competition which incorporate your interpretation of the theme of the exhibit. Selected artists will be featured in the month long exhibition in Goodrich Gallery at First United

Methodist Church in the heart of the Arts District in downtown Dallas, and receive recognition on the church website. An Opening Reception honoring the artists will be held Sunday, October 1, 2017, 12:00 to 2:00 following the worship service. During the exhibition visitors will have an opportunity to cast ballots for the People's Choice Award. On Sunday, October 29, 2017, at 12:30, the top three winners will be announced, with a prize award going to the overall winner. At that time exhibitors may take any unsold art work with them.

**To enter please submit your entry in the attached form by Midnight, Tuesday, August 1, 2017 for consideration of participating in the juried art exhibition. Please review the following requirements to be considered for the show. Acceptance letters will be sent via email on Monday, August 21, 2017.**

- Please title your file like this: title, size, artist.jpg.
- Upload entry specifications: Maximum width 2500px wide at 72dpi/ 180dpi. Accepted artists will be featured through our online media.
- Submit a headshot in addition to your artwork for publicity purposes. Please include your name, medium and website url.
- All 2D work must be suitably framed and wired for hanging. Gallery wrapped canvas is also acceptable. Work should not exceed 48"x48".
- Art work must be original. Work done in a production studio, classes or workshops, work from kits, commercial designs, and derivative work is prohibited. All work must be new and not previously shown at the Goodrich Gallery.
- Work may be offered for sale or marked NFS on the entry form. The Gallery will retain 25% of any sales. Please take this into consideration when determining the sales price. Sales tax is the responsibility of the artist.
- Artists must include in the online registration a statement describing how the entry relates to the theme *First Fruits*.
- Acceptance letters will include important dates and an exhibition contract to be completed and returned via email or fax to Music & Arts office in First United Methodist Church. (Rejection notification emails will follow promptly.)
- Insurance of art work is the responsibility of the artist.
- Work must have index card with artist's name, title of work, price and contact information attached to the back of the work.
- All art work must be delivered to the Music and Arts office, 1928 Ross Ave., Dallas, TX 75201, on Thursday, September 21, 2017, between 9:00 a.m. and 4:00 p.m. If there is a conflict please call