

Kaligrafijos

MARCH 2016
VOLUME 36 NO. 7



FROM WET INK TO PRINT
with Sherry Barber



"We Ink 'em Up!"
Presidential Seal By Janell Wimberly

President's Letter

Welcome All Things Green and Golden -

As February fades away, March jumps right in to take its place with promises of Spring just around the corner. This month, we get Cupid's devious cousin, the Leprechaun along with all the wonder and promises of the "Pot O'Gold" at the end of a Rainbow! Now, he really is a fun little guy, but will do whatever necessary as the protector of the "Pot O'Gold"! Just be very careful if you ever try and steal his gold!

Speaking of "Pots O'Gold" which is a part of St. Patrick's day and reminds me of an old saying: A weed is a flower that grew in the wrong place. That is exactly how clover is treated, yet a 4 leaf clover is good luck to whomever can find it. In my Grandmother's family bible that was well used and loved and busting at the seams, that I inherited, I found pressed 4 leaf clovers that had been picked by my great grandmother. This is my "Pot O'Gold" and I feel pretty lucky to have gotten this family heirloom, with all its memories and treasures. Remember to take the time to pick the weeds, I mean wildflowers, and cherish every Dandelion bouquet you receive.



The deadline for the Graceful Envelope Contest, is coming up fast. It must be postmarked by March 28th. The theme this year is "Communications". Check out the Washington Calligrapher's guild website for more info.

Speaking of envelopes.....I will be heading up a SWCC Envelope Exchange this year. It will run for 6 months from May to October. Details will be sent in a separate email. Some of you might recall I did this several years ago and I was approached at the SWCC conference to

do it again. This is your chance to exchange postal art with fellow calligraphers and artists in our conference; from Tulsa to Houston to New Orleans and all the guild cities in between. I hope you will join in the fun.

Our next exhibit will be in April at the Artists Showplace. See Margaret for details!

March 26th we have a play day planned. Cristie will be leading us in color study. She will teach us that we don't have to have 200 different colors. All you really need is the primary colors and all the rest are mixed using those same colors....Mind blowing! Creation of a simple color wheel is only one of the projects that will be accomplished. Sign up now while there are still seats available!

The Executive positions of President and Secretary are on the ballot this year. If you are interested in either position (maybe tired of reading this President's rambling letters), please seek out our Nominating Chair, Brenda, or anyone on her team; Marilee, Marilyn, or Rita.

May you each find your own special "Pot O'Gold" at the end of your rainbow no matter what it is. Remember, Beauty is in the Eye of the Beholder!

May your ink flow green,

Thomas





BOARD MEMBERS

President:
Thomas Burns
Vice President:
Betty Barna
Treasurer:
Rick Garlington
Secretary:
Trish Manche
Exhibits:
Margaret Mall
Historian:
Randy Stewart
Library:
Brenda Burns
Membership:
Eric Doerr
Newsletter:
Anita Hofmeister
Programs:
Cynthia Stiles
Fund Raising:
Kathy Setina
Javier Mardones-Hermosilla
Communications & Workshops:
Sherry Barber

2015-2016 CALENDAR

General Meetings - 2nd Saturdays 10:00am

Come early at 9:30am for social time.

March 12 • Sherry Barber - Wet Ink into Digital Print

April 9 • Ken Robinson - Brush Lettering for Signs

May 14 • Thomas Burns - Tool Box Time

Board Meetings

May 21 1:00pm • Rick's Place

Workshops

Jaycee Park Center for the Arts in Irving

April 14-17 • 9:30am-4:30pm - Georgia Angelopoulos

Things Greek and Gilded

Playdates

Senter East Building in Irving

9:00am-12:00pm

March 26 • Cristie Campos, Color Study

June 11 • Rick Garlington, TBA

The Kaligrafos Newsletter is published 9 times yearly in the months of regular meetings.

Send art, articles, announcements or comments by [clicking here](#).

COLOR STUDIES

Spring Play Day with Cristie Campo

See page 12 for details

Meeting Location

The Kaligrafos meeting on March 12, 2016 will be held at the

Lovers Lane United Methodist Church

9200 Inwood Road, Dallas, TX 75220

Look for us in Room C103-105 on the first floor over by the gym on the west side of the church campus.

MARCH PROGRAM

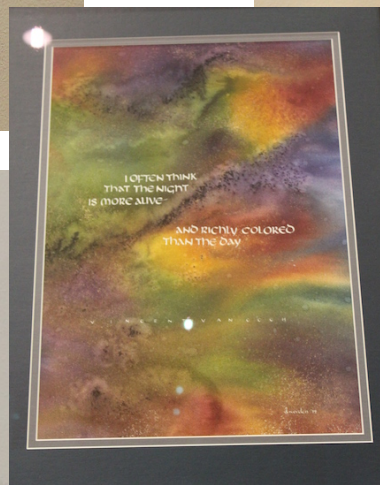
FROM WET INK TO PRINT

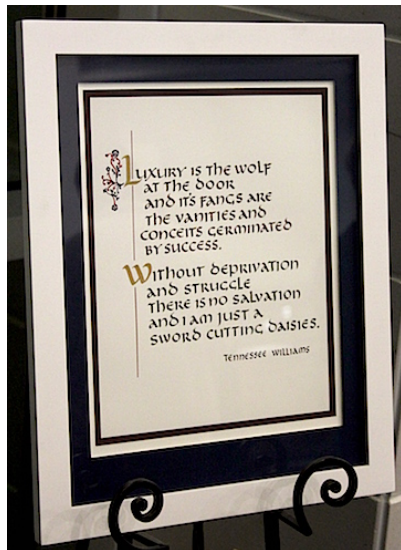
with Sherry Barber

You have calligraphed a beautiful card or invitation. But you need 20 or 120. Learn how to clean up a calligraphed layout and bring it to print ready using either Photoshop or Photoshop Elements. If you have either program and a laptop, feel free to bring it and follow along. Otherwise, take the instruction sheets and do try this at home.

“SCENE” AT THE 2016 WINTER EXHIBIT!

INSPIRATION!





Thank you, Margaret Mall, and all who participated in this exhibit!



Announcements

Book Reviews

If you are looking for an opportunity that will help others, fill a need and be more rewarding than you could imagine, then the Library Committee wants YOU!

We have an extensive library and it can be overwhelming (especially to those new to calligraphy) to decide what books to borrow, which is why the Library Committee is asking its members to write reviews of our books. The reviews will be published in both a future newsletter as well as posted on the Library Thing. For more information, please contact Brenda.

Donate Cards

Donate your handmade cards to Membership Chair, Eric Doerr! We need them for birthdays and other occasions! Thank you!!!

Like Kaligrafos on...



Library Books

Remember that library books are due at the next meeting.

Browse The Library Thing to pick out a few titles at: <http://www.librarything.com/catalog/Kaligrafos> then send Brenda Burns an email with your selection(s) at library@kaligrafos.com so she can bring your selections to the meeting.

Please note:

When requesting a library book from Brenda, be sure to put in the subject line "Library Book" or "Kaligrafos."

2015-2016 Membership

Join Kaligrafos

The Dallas Calligraphy Society

\$25 for individual membership

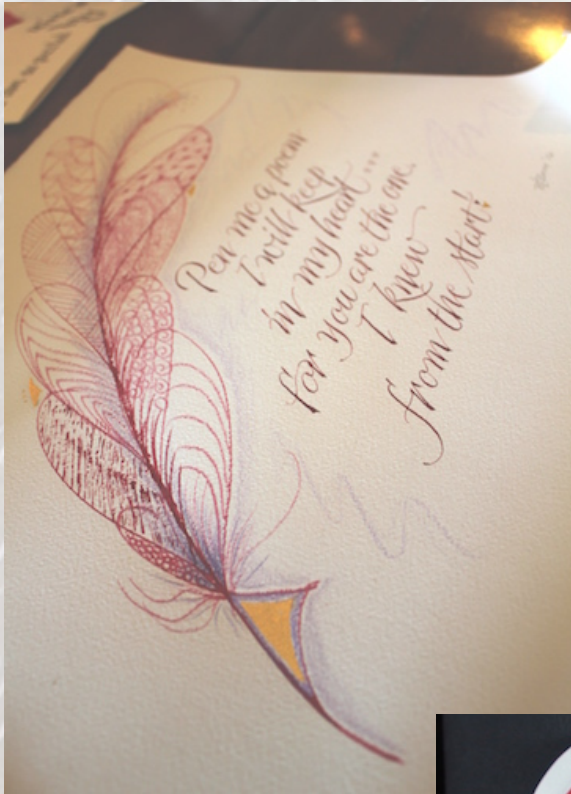
\$35 for family membership

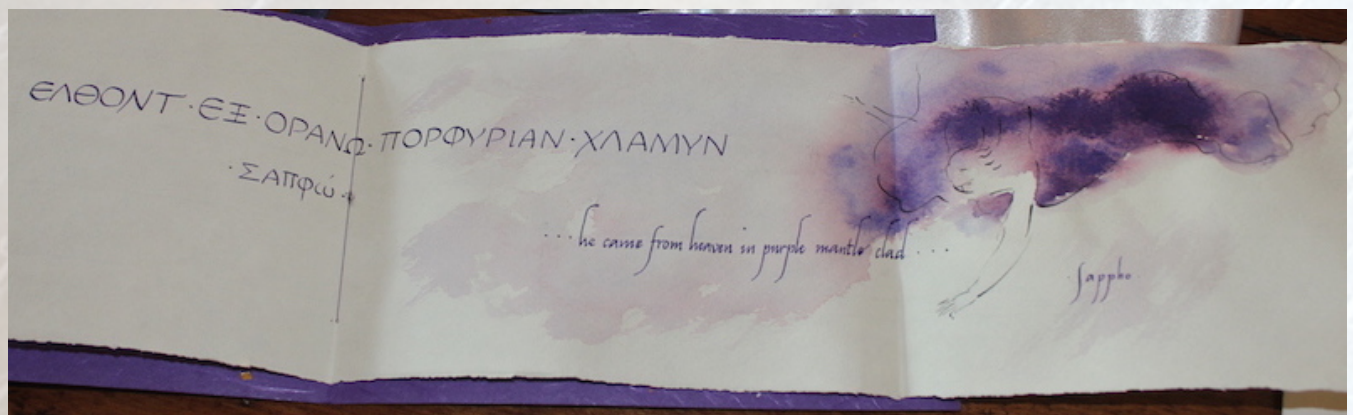
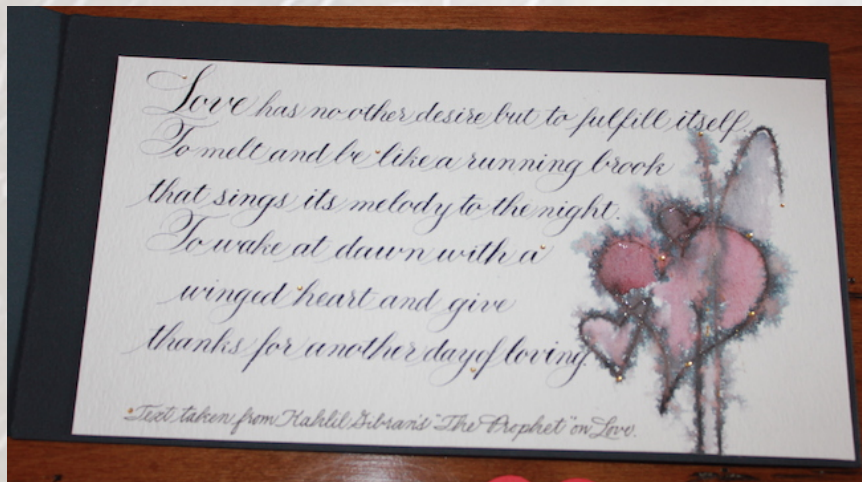
http://kaligrafos.com/join_us/join_us.html

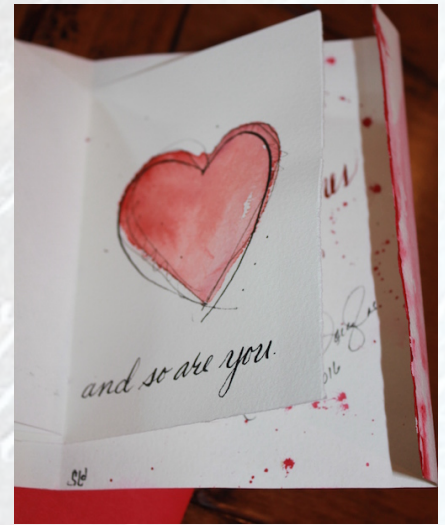
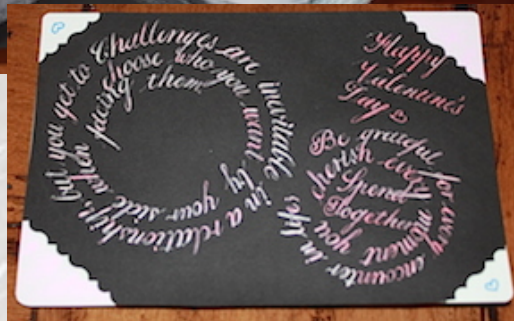
Please send membership changes of your information via email to Eric Doerr calligraphy@letterboxes.org

REFLECTION ON OUR FEBRUARY
Valentine Social

Here are some of the awesome Valentines brought to the exchange!
Thank you, to all who planned this event and participated!







The background used for pages 6-8 is from Carol Scott's hand lettered valentine.

Members' Local Classes

Carol Measures Scott **Icebreaker Italic Class** Broad-pen Calligraphy

Resist the cold with the warmth of a new hobby in a class of discovery.

Date: Tuesdays, beginning 2/16/16, six weeks

Teacher: Carol Measures Scott

Location: 7121 Oaklawn, Sachse, TX 75048

Time: 6 - 8 PM

Ages: 14 and up

Price: includes 12 hrs of teaching, handouts, calligraphy graph pad, Pilot Parallel pen set \$144 - if paying by cash, check or money order \$148.88 - if paying online

~ Class size limited, please register early.

Questions? Email Carol - callicarol@aol.com

Please bring: pencil, ruler, eraser, a *few* paper towels, apron (or wear old clothes), a few paper clips

Optional: note-taking supplies, folder for handouts, your own drink

Please send check for \$144 made out to Carol's Calligraphy along with the completed form below to: Icebreaker Italic Workshop, 7121 Oaklawn, Sachse, TX 75048. Your payment secures your reservation. I am no longer able to hold spots without payment because of folks in the past canceling at the last minute. Refunds available if your spot is filled from the wait list. No refunds for missed classes.

Check out my work:

www.carolscalligraphy.com

FB: [facebook.com/carolscalligraphy](https://www.facebook.com/carolscalligraphy)

IG: @carolscalligraphy

Beverly Stewart: Instructor **Card Making Classes \$5** **Saturdays 9:30 AM to 11:30 AM**

At THEO: <http://theosonline.org/Locations.htm> or 214-551-5782 or beverlystewart@gmail.com

Bring your own scissors and adhesives.

If you make a Stampin' Up! purchase, the class is free. As always there is no pressure to buy.

Come, make cards and have fun!

Workshops taught by **Janell Wimberly**

www.jkwimberlydesign.com/Home.html

Cristie R. Campo

cristiecampo@mac.com

Zentangle (artist's home)

Call: 214.714.5344

Fridays 6-9pm

Fee: \$40 supplies included

Collin College Plano

Continuing Education

www.collin.edu/ce/register

972.985.3711 to register by phone

Creative Art Center Dallas

www.creativeartscenter.org/schedules

Here are two opportunities to get away and have an enriching calligraphic experience.

[Sharon Zeugin](#) is the coordinator for the Ghost Ranch *Literally Letters* program

in New Mexico on June 12-18, 2016,

and leads the *SKETCH UMBRIA! IN LETTERS, LINES & IMAGES* workshop

in Italy on September 3-17, 2016.

Please click these sites for more information!



Harvey's Helpful Hints

by Harvey Anton

This Month's Spotlight- As you know, I bring several brands and numbers of vintage nibs to the meetings for sale at reasonable prices. 10% of the sale price goes to Kaligrafos. And this month's spotlight is on the Hunt #100 - a smaller than average nib, but very flexible nib to have in your arsenal. It will give you extremely fine upstrokes, while delivering beautiful downstrokes with minimum pressure. It is a pleasure to use and performs well. I also bring my 8 models of handmade wooden penstuffs with me, a new Rosewood offset penstaff just received, plus the modified plastic Speedball Hourglass holder which allows you to insert as long a nib into the holder as you want, but allowing only the amount of nib you want to stick out the front. For beautiful writing reach me at penstaff@verizon.net, H) 972-307-0172, and C) 817-470-2735

If you do not have a paper cutter consider purchasing the Fiskars Rotary Blade Cutter. This is not the guillotine type where you can easily lose a finger, but a sharp round roller blade which is protecting your hands and fingers. It may not cut as many sheets at a time as the Guillotine type, but I'd go for the security over the quantity of pages anytime...plus it is more accurate with sharper paper edges.

Have you tried writing with an ink made from lamp soot? Probably you have and didn't know it, but it's available from Colonial Williamsburg, Virginia. It comes in powdered form in a package, mix with 2-3 ounces of warm water, has a good blackness, and very usable with copperplate making very fine lines. Their address is:

Historic America, P.O. Box 218, White Oak, Ga 31368. You will be pleasantly surprised.

Don't get locked in to how a piece should look. Experiment, use thumbnail sketches and try several different ways to make the piece look better. Use a bold word, use a rich color on a letter or word and try to make the piece stand out instead of looking back at you. It's easier than you might think and the end result will be more pleasant! You want people to look at your piece and read it without any problems. Have the words flow and easy to read.

Most smooth paper is from the "hot press" method, and "cold press" method has more texture. When doing copperplate use the smoothest paper you can find and the nib won't splatter on smoother paper. But if you have to use a textured paper for copperplate you can use a stiff nib which might help.

Haven't mentioned much on stamping in the past so here goes a tip for you stampers: for storage you might consider a small pizza box. Clean the stamp before storing, and never use plastic storage boxes for stamps – there is a chance that the stamp will melt to the plastic and never be usable again. And store your pads upside down so that the stamping ink will flow to the top of the pad and be ready to use immediately.

'Til next month, for beautiful writing, in peace and harmony,

Plano Harvey

Click for
Registration

THINGS GREEK & GILDED

THURS - SUN, APR 14-17, 2016
RETREAT with Georgia Angelopoulos

\$425 Member Double Occupancy
\$500 Member Single Occupancy

Space is limited to 20 • Materials Fee TBA

FWCG Membership is included for the 2015-16 year.

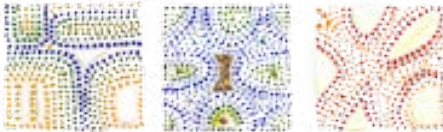
NAZARETH RETREAT CENTER
1814 Egyptian Way, Grand Prairie, TX 75050



Gilding Techniques



Greek Script (student example)



Ancient Greek Tetra-chrome Palettes (student example)



Contact Angie Vangalis - workshops@fortworthcalligraphersguild.com or 214-957-1736.

[Click here for supply list](#)

Practice Time

Compiled by
Randy Stewart

**There is always more misery among the lower classes
than there is humanity in the higher. Victor Hugo**

*In archaeology you uncover the
unknown. In diplomacy you cover the
known. Thomas Pickering*

A lot of fellows
nowadays have a B.A.,
M.D., or Ph.D.
Unfortunately, they
don't have a J.O.B.
Fats Domino

*Advertisements... contain the only
truths to be relied on in a
newspaper. Thomas Jefferson*

**I don't know the key to success, but the key to
failure is trying to please everybody.**

***I haven't
lost my
marbles. The
voices in my
head are
playing with
them.***

***If it weren't for
double standards,
most politicians
wouldn't have any
standards at all.***

Whoever ceases to be a student has never been a student. George Fles

**To avoid situations in which you might make
mistakes may be the biggest mistake of all.**
Peter McWilliams

**MY DEFINITION OF A FREE SOCIETY IS A
SOCIETY WHERE IT IS SAFE TO BE
UNPOPULAR. ADLAI E. STEVENSON JR.**

COLOR STUDIES

Spring Play Day with Cristie Campo

When?

March 26, 2016 from 9am to Noon

Where?

Senter East Building, 228 Chamberlain Street, Irving, TX 75060

What are we going to do?

We will be exploring what water colors do,

how to mix and how to see the difference between cool and warm colors.

The group will learn how to layer water colors on top of each other and how to create new colors.

AND there will be a project to work on if there is time.

What to Bring?

water colors— all you have

OR

gouache—all you have pencil, scissors if you want,

salt, rubbing alcohol if you want

Micron pens

paper towels,

water bowls at least 2

apron

brushes, different sizes you already have

And last but not least:

Arches water color paper with printed chart and printed project *

* This is why you need to sign up if you are interested, Cristie will be providing us, via email, with templates so we can print the charts and

project on our Arches watercolor paper before the playdate,

which is why there is no materials fee for this opportunity.

We hope to see you there! Please email Cynthia Stiles

at scinders@sbcglobal.net to let her know if you plan on coming or if you have any questions.



Calligraphy Guild of Oklahoma - Tulsa

“A Study in Designing a Contemporary Illuminated Letter”

With Heather Victoria Held

May 14th & 15th, 2016 At the Tulsa Garden Center

Signups please by April 1, 2016 - Workshop fee: \$135 for members; \$150 for non-members
Contact Carol Francis for information: 918 943-3330 or 918 638-2028 cgofrancis367@gmail.com

www.heathervictoriaheld.com & www.inkflourishes.blogspot.com