

Kaligrafijos

JANUARY 2016
VOLUME 36 NO. 5



LAYING GOLD LEAF
with Betty Barna



"We Ink 'em Up!"
Presidential Seal By Janell Wimberly

President's Letter

Helloooooooooooooo and Welcome to 2016 all my lettering cohorts -

It's official, 2015 is in the rearview mirror and 2016 is out on the horizon. Let us not dwell on the *would've*, *could've* and *should've* from the past year as none of it can be changed. What is done is done. Let us take what we have learned, both good and bad, and put it to use this year. Your canvas is clean and paper fresh, so break out the ink and wield your favorite pen, staff, or brush and make a mark! It starts now and the whole year is in front of you with opportunities you haven't imagined, but it all starts with that first mark. This is the year to take a risk and push yourself past merely thinking and contemplating and just *Do It!* Don't let this be another year that ends with the "I only wish I would have.....". Remember, there is no failure in art- only learning and building upon our knowledge and experience. Only the artist buys the "blank" canvas as no one wants to hang or look at something with nothing on it. Now, once the creator has poured their heart and soul into it, that's when others take note and want it for themselves and not everyone "wants" the same thing, thankfully.

Love is in the air, and in just a little over a month we'll be having our Valentine Social. It's our "let your hair down, get a little crazy" party that's talked about all year long. So, be sure to block off Feb 13th if you haven't already. We will have the raffle again this year and for the first time a live auction for an original piece by Kaligrafos' own Janell Wimberly. Of course there will also be the Valentine card swap!

Our first workshop is a one day event on March 5, with Betty teaching us the "Button" alphabet. This is one funky and fun lettering style and something I've been waiting for myself. Louis Lemoine taught it at Legacies II with permission from the original creator. Do you know who that is, or why it was named the button alphabet?

In April, the Fort Worth guild is hosting Georgia Angelopoulos for a three-day event, "Things Greek and Gilded". Check out their website for information and reach out to Angie Vangalis for registration (she is their workshop chairman). Betty is leading us in the January program on Laying Gold Leaf and it will be a great teaser for Georgia's workshop.

Then in the fall, we are hosting Kathy Milici. She is a pointed pen wonder. If you haven't already "friended" her on FaceBook then look her up and become her friend. She is a hoot! This is another workshop I'm really looking forward to. There will be more to come in the way of details; just keep your eyes and ears on point (pun intended)!

There will be some play days thrown in for good measure as well. As you can see there is quite the line-up laid out for us this year. I would like to give a HUGE round of "Thanks" to Sherry for her dedication and diligence in lining up our *awesome* workshops! Thank You!

As always, January brings the announcement of this coming year's Executive Board positions that will be up for election in May and this year it's the President and Secretary. If anyone is interested in either position please contact the nominating committee. I will be announcing the nominating committee members at the guild meeting.

Wishing everyone an inspiring hand lettered, ink slinging year!

Thomas



BOARD MEMBERS

President:
Thomas Burns
Vice President:
Betty Barna
Treasurer:
Rick Garlington
Secretary:
Trish Manche
Exhibits:
Margaret Mall
Historian:
Randy Stewart
Library:
Brenda Burns
Membership:
Eric Doerr
Newsletter:
Anita Hofmeister
Programs:
Cynthia Stiles
Fund Raising:
Kathy Setina
Javier Mardones-Hermosilla
Communications & Workshops:
Sherry Barber

2015-2016 CALENDAR

General Meetings - 2nd Saturdays 10:00am

Come early at 9:30am for coffee and social time.

January 9 • Betty Barna - Laying Gold Leaf

February 13 • Annual Valentine Social

March 12 • Sherry Barber - Wet Ink into Digital Print

April 9 • Ken Robinson - Brush Lettering for Signs

May 14 • Thomas Burns - Tool Box Time

Board Meetings

December 5 1:00pm • Tom's Place

February 27 1:00pm • Betty's Place

May 21 1:00pm • Rick's Place

Workshops

Jaycee Park Center for the Arts in Irving

April 14-17 • 9:30am-4:30pm - Georgia Angelopoulos

Things Greek and Gilded

March 5 • 9:30am-4:30pm - Betty Barna - Button Alphabet

Playdates

Jaycee Park Center for the Arts in Irving

9:00am-12:00pm

March 26 • Cristie Campos, Color Study

June 11 • Rick Garlington, TBA

*The Kaligrafos Newsletter is published 9 times yearly in the months of regular meetings.
Send art, articles, announcements or comments by [clicking here](#).*

INSPIRATION!

Kaligrafos Winter 2016 Exhibit
Lovers Lane United Methodist Church
9200 Inwood Rd, Dallas, TX 75220
Watson Gallery

Come See!!!

January 8th to February 3rd

New Meeting Location!!!

The Kaligrafos meeting on January 9, 2016 will be held at the

Lovers Lane United Methodist Church

9200 Inwood Road, Dallas, TX 75220

Look for us in Room C103-105 on the first floor over by the gym on the west side of the church campus.

JANUARY PROGRAM
LAYING GOLD LEAF
 with Betty Barna

This will be a demonstration of the method of laying gold leaf in the current and most popular methods used by Reggie Ezell and Georgia Angelopoulos in their ongoing classes. Georgia will be teaching a workshop here in April through the Fort Worth Calligraphers Guild. And Reggie has just finished his year long class through the same guild. These methods are easier to use than the traditional gesso method and are therefore more assessable to the majority of artists whether they be seasoned professionals or beginners. You too can add this method to your tool box of talents.

(Check page 14 for Georgia's workshop information.)



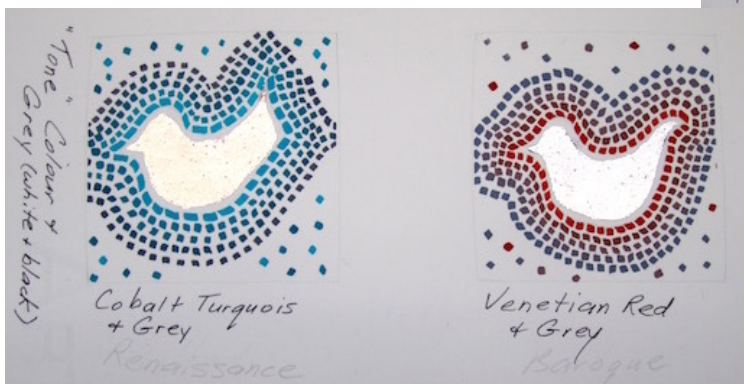
Multiple - mix 3 or more colours



Caput Mortuum
 Payne's Grey
 Naples Yellow
 Venetian Red
 Cobalt Turquoise @ Grey
 Moon



Naples Yellow (Talens)
 Red Oxide
 Linden Green
 23k



Announcements

Book Reviews

If you are looking for an opportunity that will help others, fill a need and be more rewarding than you could imagine, then the Library Committee wants YOU!

We have an extensive library and it can be overwhelming (especially to those new to calligraphy) to decide what books to borrow, which is why the Library Committee is asking its members to write reviews of our books. The reviews will be published in both a future newsletter as well as posted on the Library Thing. For more information, please contact [Brenda](#).

Donate Cards

Donate your handmade cards to Membership Chair, Eric Doerr! We need them for birthdays and other occasions! Thank you!!!

Like Kaligrafos on...



Library Books

Remember that library books are due at the next meeting.

Browse The Library Thing to pick out a few titles at: <http://www.librarything.com/catalog/Kaligrafos> then send Brenda Burns an email with your selection(s) at library@kaligrafos.com so she can bring your selections to the meeting.

Please note:

When requesting a library book from Brenda, be sure to put in the subject line "Library Book" or "Kaligrafos."

2015-2016 Membership

Join Kaligrafos

The Dallas Calligraphy Society

\$25 for individual membership

\$35 for family membership

http://kaligrafos.com/join_us/join_us.html

Please send membership changes of your information via email to Eric Doerr

calligraphy@letterboxes.org

Valentine Raffle



Janell Wimberly

We appreciate all who donated toward the raffle! We're very happy for these generous gifts and have some wonderful items. Thank you for sharing your creativity and generosity!

Many thanks!

-Javier

Mardones-Hermosilla and
Kathy Setina



Sandra Douglas

NOVEMBER PROGRAM REVIEW

Architecture to Art Design and Composition with with Cynthia Stiles

By Angie Vangalis and Cristie Campo



The November meeting boasted a plethora of goodies to buy at the annual bazaar along with an inspiring program facilitated by our Program Director, Cynthia Stiles.



Cynthia, an Architect, decided to venture into the world of lettering when she decided (just last year) to take the year-long Fort Worth Calligraphers Guild sponsored class - 26 Seeds: A Year To Grow - taught by Reggie Ezell.



Meeting attendees enjoyed a very well presented program by a "new calligrapher/Architect's" perspective as



Cynthia shared her creative process starting with tools, practice, planning, design and layout to the

finished, gilded artwork.

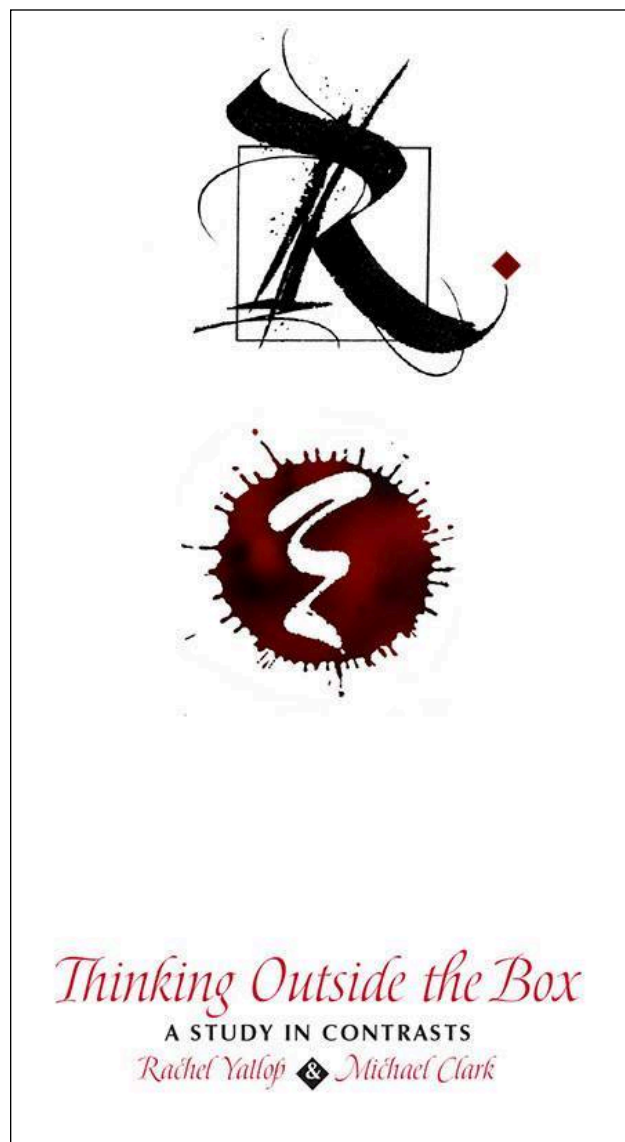
She did a wonderful job with the power point presentation by showing the different tools of her trade as an architect.



Cynthia has continued to use some of those traditional tools to embark on her calligraphy journey.

Thinking Outside the Box

A book review by Carol Scott



The striking front cover.

I was delighted to see my copy of *Thinking Outside the Box* in my mailbox a few days ago. Since Michael Clark and Rachel Yallop first started posting their collaborative work on Facebook a few years back, I was hoping that they would produce a book. How rewarding to see that they have done so!

The book is just what the subtitle says, a study in contrasts. This volume (there is a second in the works) is at once an art collection for admiring and a visual text for studying. How much we have to learn from Michael and Rachel! Each piece is replete with masterful

executions of proportion, balance, rhythm, emphasis and unity - excellent design.

Rachel Yallop was born in 1962 and brought up in a tiny village in Devonshire, England. After she left school she did a one year Foundation Course at Exeter College of Art & Design before studying for a BA(Hons) in Graphic Design at Ravensbourne College of Art & Design near London. She then did a Masters degree at the Central School of Art & Design also in London. After living in the city for many years she says that she 'escaped' to the country and now lives in rural Herefordshire. She has been a self-employed calligrapher and lettering designer her whole working life – about 30 years. Many of you are familiar with her black and white companions Foss, the cat, and Harry, the horse, from Facebook. Perhaps they are the inspiration for the all black, white and red production of this book?

With no art background, Michael Clark left a banking career in 1980 at the age of 28. He begged for a job at a local "type house" where he trained in traditional darkroom techniques, Phototypesetter, type specification/proofing and paste up. A year into the process he began to emulate the typeforms with a "calligraphy pen." In 1982 he left to freelance. His current work includes logotype design, titling (for books, magazines and CDs), development of fonts for corporations, journal and book design. Pouty is a light contemporary italic, which is accompanied by a large set of ligatures and alternate characters that add a touch of spice to an already elegant cursive. For his entire career as a commercial lettering artist, Michael noticed that italic, and its limitless variants, is more utilitarian than other calligraphic styles. Pouty, named for his youngest daughter Jennifer, a sulky beauty, is one of his favorite variations. He resides in Virginia. Two of his fonts have won international awards and he has been featured twice in Letter Arts Review.

See some of his fonts here:

http://www.myfonts.com/person/Michael_Clark/

Book Review Continued...

Also you can find both Rachel and Michael on Facebook:

Rachel: <https://www.facebook.com/RachelYallopCalligraphyLettering/?fref=ts>

Michael: <https://www.facebook.com/typerror/?fref=ts>

I think you will be delighted with *Thinking Outside the Box*. I am gathering orders for anyone in the guild who would like to receive

a discounted price with a group order. The individual price is \$25 including postage.

The price for each copy in the group order is \$16 + \$2 shipping.

Please contact me by email: callicarol@aol.com or sign up and pay at the January Kaligrafos meeting.

Not sure? Check out these delicious spreads.



Some of the lovely pages inside.

Here are two opportunities to get away and have an enriching calligraphic experience.

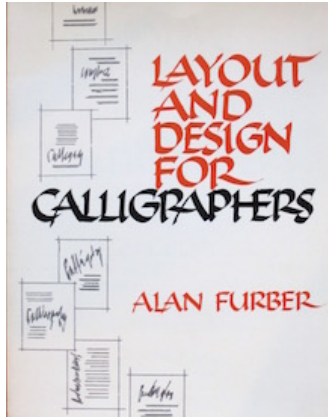
[Sharon Zeugin](#) is the coordinator for the Ghost Ranch *Literally Letters* program in New Mexico on June 12-18, 2016, and leads the *SKETCH UMBRIA! IN LETTERS, LINES & IMAGES* workshop in Italy on September 3-17, 2016.

Please click these sites for more information!



Members' Local Classes

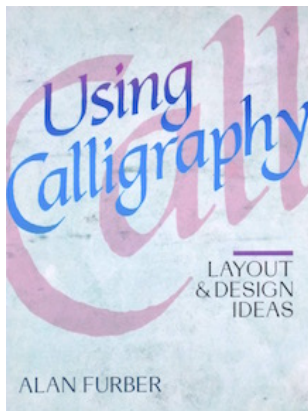
Layout & Design For Calligraphers By Alan Furber



To be taught by
Betty Barna
at the studio of
Jeri Wright
Time: Saturdays from
1:30 – 3:30 PM
Dates:
January 16, 23, 30
February 6, 20, 27
Cost: \$120
There will be only 7
spots available.

Sign up by emailing Betty at
blbarna@mac.com and mailing
or giving her a check.

Books are available on Amazon – get both the
book above and “Using Calligraphy” by the
same author.



Cristie R. Campo

cristiecampo@mac.com

Zentangle (artist's home)

Call: 214.714.5344

Fridays 6-9pm

Fee: \$40 supplies included

Collin College Plano

Continuing Education

www.collin.edu/ce/register

972.985.3711 to register by phone

Creative Art Center Dallas

www.creativeartscenter.org/schedules

Beverly Stewart: Instructor

Card Making Classes \$5

Saturdays 9:30 AM to 11:30 AM

At THEO: <http://theosonline.org/Locations.htm>
or 214-551-5782 or beverlystewart@gmail.com

Bring your own scissors and adhesives.

If you make a Stampin' Up! purchase, the class
is free. As always there is
no pressure to buy.

Come, make cards and have fun!

Workshops taught by Janell Wimberly

www.jkwimberlydesign.com/Home.html

Carol Measures Scott



Learn or upgrade your Modern Calligraphy!

I offer private lessons and small classes.

Days available: Sunday - Thursday

Times available: 11 - 5 and some evenings

Location: Sachse, TX

Teacher: Carol Scott

Topics: pointed pen, broad edge pen, projects,
addressing, gifts, working with color,
backgrounds, making cards

Price: \$30/hour/person, less for each added
student

Check out my work:

www.carolscalligraphy.com

FB: [facebook.com/carolscalligraphy](https://www.facebook.com/carolscalligraphy)

IG: @carolscalligraphy

Questions? Email Carol - callicarol@aol.com

Show and Share

with Nikhat Qureshi

It was an honor to paint and write a couplet in Urdu about Urdu language by Allama Muhammad Iqbal the great poet and scholar of the East. The three identical paintings (Acrylic on Canvas 11x14") were presented to notable accomplished guests at the 1st International Urdu Conference in Dallas by "Urdu Ghar", an



organization with a mission to preserve Urdu language and literature. Urdu is one of the most widely spoken languages of South Asia that is full of beauty and grace. Calligraphy script in

Urdu is called Nasta'liq that shares its style with Persian Calligraphy. It is because that



Urdu and Persian share a similar grammar and word roots and also has similar alphabets as Arabic

however Arabic Calligraphy scripts are different from Nasta'liq.



Harvey's Helpful Hints

by Harvey Anton

What are you using to hold your wet envelopes, place cards, etc. while letting the ink dry?

Remember the “slinky” spring? Mount both ends after stretching the spring slightly and insert the envelopes between the spring coils, but be careful not to smear the ink. My favorite was the envelope drying tube that comes with the Gocco Silk Screen Printer. It was a tubular stand with 2 springs attached in 5 grooves (to set different heights between the springs). You could set the envelope short side between the spring grooves and not be near the wet ink.

Keep a cheapo battery operated pencil sharpener handy. There's nothing like having a sharpened pencil lead to rely on – never know when you might need it, but the sharpener will help the lead stay sharp-pointed. They are indispensable. I never heard anyone say, “I wish my pencil lead wasn't so sharp.”

On all your rulers apply a cork backing to prevent any movement. If cork is unavailable, apply bathtub strips of nonslip strips. They will serve the same purpose – raising the ruler off the paper slightly plus making it nonslip. Don't get the strips too near the edges of the ruler as ink might seep underneath.

When finishing a piece, make sure you sign and date it and keep it in a folder with all the pertinent information: paper, ink, nib, size, etc. Whenever you can, make a copy for yourself if you have to give the original to a client. You never know when the client will come back for a repeat; and try to take a picture of the piece and put it in the folder also - “a picture is worth a thousand words”. Yes, I had a client come back 3 different times for a repeated quotation (several years apart) – luckily I had all the information in his folder. Just do it!

It's a good idea to go back to your books to re-examine the style of writing you learned no matter how long ago. Re-examining closely will remind yourself that you can improve the letters you are making – correct obvious mistakes in your lettering...tweaking here and there. This can help improve the look of your letters instead of making the same mistakes over and over. And check the masters' works as well to see if your examples are like the exemplars of the masters...and make changes accordingly.

We all know that it's best to practice at least 30 minutes before starting an art piece, but how many of us do this? When in doubt practice at least an hour before starting. This will get your muscles time to relax and accustomed to holding the pen again and your mind to focus on the job at hand, and getting used to the pen touching the paper. We all know it makes your letters look better also – Just Do It!

REMEMBER THIS: Anything you learn, even though it's not what you expected, is not a mistake!

And EXPERIENCE is what you get when you don't get what you want!

Did you know that Spencer Pen Co. made 3 models of their famous Spencerian #1 nibs?

They are stamped “New York”; “New York and England” and the third model is stamped “Made in England”.

When using an eye dropper for transferring ink to another vessel, to keep the little rascal from rolling around (and leaving an ink trail), simply cut a square out of mat board or poster board (about 1-1/2” square), pinch a hole in the center of this square, insert the eye dropper into this hole, and voile! - a no roll eye dropper!

Looking for quotations? Hard to find one you really like? Try this website by some world famous authors: www.columbia.edu/acis/bartleby/bartlett. This site will give you an almost endless supply of quotes you are able to use.

To spark up your artwork instead of having the same ole, same ole, try incorporating one or more of the following: watercolor pencils, fine line (Pigma) pens, quills, bamboo, lipstick, q-tip, twig, stem or flower, balsam wood dowel, or anything else that might work – use your imagination!

Not to be overlooked: ALWAYS request an additional 10% more envelopes from your client for mistakes and additional names. This will come up more than you might think, and neither of you will be sorry for the additional envelopes. We are not machines and we are inclined to make mistakes (as well as mistakes from the client). Expect corrections to the list, and ALWAYS request a typewritten list.

Continued on next page...

Harvey's Helpful Hints Continued...

As you probably know I have several vintage nibs with me at the meetings for sale. Take advantage of having these vintage nibs available to you at reasonable prices – when they're gone there won't be any more to compare. In addition to the vintage nibs I also have my 8 models of pen staffs with me, and my “Hints” CD, and Vintage Penmanship CD which has over 3400 photos on it from some of the masters. You can use this for comparison and learning – like having the “masters” sitting over your shoulder

helping you with your lettering. Let me know in advance and I'll bring whatever you need to the meeting, or can mail you most anything, and remember, too – 10% of all sales goes in the Kaligrafos treasury...a triple win situation!

‘Til next month, for beautiful lettering,
just Plano Harvey
H)972-307-0172, C)972-207-1199,
Email: penstaff@verizon.net

Practice Time

Compiled by
Randy Stewart

The fact that there's a highway to Hell and a stairway to Heaven says something about anticipated traffic numbers.

EXERCISE! I thought you said extra fries.
Artificial intelligence is no match for natural stupidity

He who works with his hands is a laborer.

He who works with his hands and his head is a craftsman.

He who works with his hands and his head and his heart is an artist.
St. Francis of Assisi

If a man says he will fix it, he will. There is no need to remind him every 6 months!
Don't grow up. It's a trap!

Education... has produced a vast population able to read but unable to distinguish what is worth reading.
G. M. Trevelyan

Water is the most essential element of life, because without water, you cannot make coffee.
Nina Dobrev

Nothing changes your opinion of a friend so surely as success - yours or his. Franklin P. Jones

I DON'T GO CRAZY. I AM CRAZY. I JUST GO NORMAL FROM TIME TO TIME.

Click for
Registration

Fort Worth Calligraphers Guild presents

Janet Takahashi



Letters of Whimsey

SAT & SUN, FEB 27-28, 2016
10:00am - 5:00pm

\$115 Early Bird FWCG/SWCC Member
postmarked on or before JAN 15, 2016

\$140 Member/Non-Member
After JAN 15th (no exceptions)

Space is limited
Materials Fee: \$5 payable at workshop

Location:
Stacy Furniture
1900 S. Main Street, Grapevine, TX 76051

There are four primary characteristics of early Greek letter design in the classical period. First the apparent 'squareness' of the shapes; secondly the uniformity of the stroke; thirdly, the consistency of the complete structure; lastly the rationality of the shapes as having no unnecessary parts (nothing superfluous).



THINGS GREEK & GILDED

THURS - SUN, APR 14-17, 2016

RETREAT with Georgia Angelopoulos

\$350 Early Bird FWCC Members only
postmarked on or before JAN 15, 2016

\$425 Member/Non-Member
After JAN 15th (no exceptions)

Space is limited to 20 • Materials Fee TBA

NAZARETH RETREAT CENTER
1814 Egyptian Way, Grand Prairie, TX 75050



RETREAT fee includes 4 full days of instruction, meals, 3 Nights lodging
(double-room with private bath.) - Add \$25 per night for single room lodging.

DESCRIPTION

Participants in this 4 day workshop will learn how to gild using traditional and modern techniques on various surfaces. While raised gilding techniques will be touched upon, the main focus will be flat gilding - learning how to tool the gold to create beautiful patterns in relief and experimenting with different techniques that can be used in traditional and contemporary work. Every participant will create a record of techniques they can use as well as a gold 'palette' or chart for future reference using a wide variety of gold alloys and metals. Complementing this will be a study of the ancient Greek 'Tetrachrome' palette; we will create simple designs with it and then use our gold charts to choose which of our metals best harmonizes with each design. Raw materials and ground pigments will be used to show the origin of our colours along with contemporary alternatives.

Learn two Greek scripts: Capital letters from the time of Alexander the Great, a traditional uncial hand from the Vienna Dioscorides and Byzantine compressed capitals. We will study these hands with the aim of breathing new life into them.

GEORGIA ANGELOPOULOS

Georgia was taught the Italic script - the 'hand' of the Renaissance Humanists - at Junior High School and was then introduced to the art of calligraphy and illumination at High School. She received instruction from a teacher taught by a student of the British scholar and scribe, Edward Johnston. Her family in Greece has strong roots in the art world that also fuelled her interest in, and love of, these arts. She studied History in Art in Athens, Greece and at the University of Victoria. While she enjoys historical research, writing articles on the development of letterforms, the manuscript tradition and calligraphy, her impulse to be a practitioner is strong. She is an active member of Victoria's Fairbank Calligraphy Society; she teaches calligraphy internationally, contributes articles to their journal and is their Archivist.

FWCG MEMBERS - REGISTER BY JAN 15, 2015 for privileged pricing.

NAME _____

EMAIL _____

ADDRESS _____

CITY, STATE, ZIP _____

PHONE - DAY _____ PHONE - CELL _____

GUILD AFFILIATION - MUST BE A FWCG MEMBER BY JAN 15 TO RECEIVE PRIVILEGED PRICING.

EARLYBIRD \$350 (POSTMARKED on or before Jan 15th)

EARLYBIRD \$50 NON-REFUNDABLE DEPOSIT - PAYMENTS MUST BE COMPLETED BY MAR 1, 2016.

Member/Non-Member rate \$425 (After Jan 15th)

Enclose registration fee made payable to FWCG to secure your seat in the retreat. Limited to 20 people.

Any questions, please contact workshop coordinator at angie@txlac.org or 214-957-1736.

Address and mail payment to:
Angie Vangalis
P.O. Box 3126, Coppell, TX 75019

No Refunds unless wait list permits or workshop is cancelled.