

# Kaligrafijos

AUGUST 2015  
VOLUME 36 NO. 1



**WATERCOLOR CARDS**  
WITH JERI WRIGHT



"We Ink 'em Up!"

# President's Letter

Welcome back Letter Lovers!

It's been a Gorgeous summer with normal to slightly "cooler" temps and some of that strange wet stuff that falls from the sky and for all of this I'm thankful along with many other things. I hope everyone got to spend time with family, friends and simply took time to enjoy all the little things that make summer so much fun.

Another year is starting and hold on to your pens as I'm expecting this to be a FABULOUS year. I would like to welcome back all our returning chairman and introduce some new folks to the board. Cynthia is taking over Programs from Jeri and Javier is stepping into Fundraising giving Kathy a break and Margaret is taking over the reigns from Betty as Exhibits Chair. Many thanks to Jeri, Kathy, and Betty for their dedication and time spent in fulfilling these positions and for their continued support in mentoring our new Chairs as they grow into their positions. Wendy is shadowing Sherry for Workshops and Eric is doing the same with Wendy for Membership. They will take over their respective chairs next year.

For all of you that got to engulf yourself in lettering at conference or IMAPETH, I'm jealous! But, it would be great if you could submit an article for the newsletter about your experience and class or classes along with pictures. All of us that couldn't participate would love to live vicariously through you. Also, bring your practice/finished pieces throughout the year for show and share!

Our first workshop this year will in October 24-25 and it's a round robin. Do you remember who is teaching? This is a brain teaser to see how many brain cells you lost or ran away over summer break.....There is a Mini-workshop also scheduled for Nov 7th and Wendy will be leading us in flourished cards (Heather Held style). Mark your calendars as you won't want to miss either of these events.

I know you'll think I'm crazy (some probably already do) for bringing this up in Aug, but don't forget about the November Bizarre. It'll sneak up on you quicker than you can say lickety-split!

I hope you enjoy this year and pick up a hint or two or find a new style, technique, tool or nib you fall in love with. We live and breathe and exist for our collective love of letters and art.

Any and all creative suggestions welcome as the year is just getting started and maybe we can work something in or even start something new!

Raise your Pens! Here's to kicking off another Spectacular year....

Thomas

PS. Don't forget to bring your exhibit pieces to the meeting or make arrangements to get them to Betty/Margaret



### BOARD MEMBERS

- President:*  
Thomas Burns
- Vice President:*  
Betty Barna
- Treasurer:*  
Rick Garlington
- Secretary:*  
Trish Manche
- Exhibits:*  
Margaret Mall
- Historian:*  
Randy Stewart
- Library:*  
Brenda Burns
- Membership:*  
Wendy Carnegie  
Eric Doerr
- Newsletter:*  
Anita Hofmeister
- Programs:*  
Cynthia Stiles
- Fund Raising:*  
Kathy Setina  
Javier Mardones-Hermosilla
- Communications & Workshops:*  
Sherry Barber

### 2015-2016 CALENDAR

- General Meetings - 2nd Saturdays 10:00am**  
Come early at 9:30am for coffee and social time.
- August 8** • Watercolor Cards - Jeri Wright
  - September 12** • Program TBA
  - October 10** • Program TBA
  - November 14** • Annual Bazaar & Program TBA
  - January 9** • Program TBA
  - February 13** • Program TBA
  - March 14** • Program TBA
  - April 12** • Program TBA
  - May 14** • Program TBA

#### Board Meetings

- August 15** 1:00pm • Kathy's Place
- December 5** 1:00pm • Tom's Place
- February 27** 1:00pm • Betty's Place
- May 21** 1:00pm • Rick's Place

#### Workshops

- October 24-25** 9:30am-4:30pm • Round Robin
- Jaycee Park Center for the Art in Irving

The Kaligrafos Newsletter is published 9 times yearly in the months of regular meetings.  
Send art, articles, announcements or comments by [clicking here](#).

## Monthly General Meeting Location

The Kaligrafos monthly meetings for 2015 - 2016 will be held at the First United Methodist Church Richardson  
503 North Central Expressway, Richardson, TX 75080  
Look for us in **Room 217A** this month.

Refer to the map of the church: Enter the main parking area from the southbound service road just south of Arapaho. Parking is on the right side, north of the building. The entrance has short stairs on one side and a concrete ramp on the other. Once inside, take the elevator or stairs to the second floor, room 217A.



# Watercolor Cards

## August Program with Jeri Wright

A new Kaligrafos year begins with our August meeting and we have a fun hands-on program planned.

Small watercolor pictures that are perfect for cards and small art pieces. We will be painting summer fruits using simple shapes as our base.

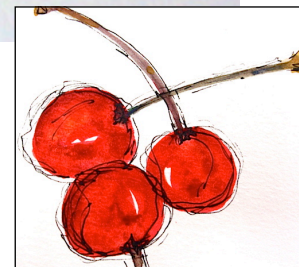
There will be color handouts for each person and please bring the following supplies (or coordinate with a table buddy to share) if you

wish to participate: small w/c palette, #6 round brush (or comparable size, inexpensive one works fine), water cup, pencil, #01 Black Pigma Micron pen (or comparable type), eraser and a few sheets of paper that will hold a wash.

Those of you who are already adept at watercolor can really show off your talents! But those of us who are newbies can take this opportunity to add another process to our files.



*Watercolors by Jeri Wright*



*On Cover*

# Announcements

---

Welcome New Member!  
Nikhat Qureshi

---

Congratulations to  
Janell Wimberly!



*Lettered by Betty Barna*

Janell was recognized with a Honorary  
Kaligrafos Membership at our May meeting.

*“Kaligrafos*

*The Dallas Calligraphy Society presents to Janell  
Wimberly*

*The designation of  
Honorary Membership*

*For her many years of service to our membership  
including teaching, assisting with exhibits, graphic  
designs, newsletter editor, organizing a Reggie Ezell  
year-long workshop, presenting programs and being a  
mentor to all.”*

Thank you, Janell!



## Library Books

**Remember that library books are due at the  
next meeting.**

Browse The Library Thing to pick out a few  
titles at: [http://www.librarything.com/catalog/  
Kaligrafos](http://www.librarything.com/catalog/Kaligrafos) then send Brenda Burns an email  
with your selection(s) at  
[library@kaligrafos.com](mailto:library@kaligrafos.com) so she can bring your  
selections to the meeting.

*Please note:*

*When requesting a library book from Brenda,  
be sure to put in the subject line “Library  
Book” or “Kaligrafos”.*

---

## 2015-2016 Membership

Join Kaligrafos

The Dallas Calligraphy Society

\$25 for individual membership

\$35 for family membership

[http://kaligrafos.com/join\\_us/join\\_us.html](http://kaligrafos.com/join_us/join_us.html)

Please send membership changes of your  
information via email to Wendy Carnegie

[wcarnegie@gmail.com](mailto:wcarnegie@gmail.com)

---

## Book Reviews

If you are looking for an opportunity that will  
help others, fill a need and be more rewarding  
than you could imagine, then the Library  
Committee wants YOU!

We have an extensive library and it can be  
overwhelming (especially to those new to  
calligraphy) to decide what books to borrow,  
which is why the Library Committee is asking  
its members to write reviews of our books.

The reviews will be published in both a future  
newsletter as well as posted on the Library  
Thing. For more information, please contact  
Brenda.

## Donate Cards

Donate your handmade cards to Membership Chair, Wendy Carnegie! We need them for birthdays and other occasions!

Please make them flat without 3D embellishing for 1st class postage.  
Thank you!!!

## Word Challenge

Calligraph these words in your favorite style of lettering or try them in a new hand!

Yearn • Yesteryear • Elegant • Exquisite

Any word beginning with Y or E can be used.  
Size is 11 x 14 or smaller.

Like Kaligrafos on...



Word Challenge  
Shared

Exquisite



## Practice Time

Compiled by  
Randy Stewart

*Where facts are few, experts are many. Donald R. Gannon*

IF THE HUMAN MIND WAS SIMPLE  
ENOUGH TO UNDERSTAND, WE'D BE  
TOO SIMPLE TO UNDERSTAND IT.  
EMERSON PUGH

If you can't be positive  
then at least be quiet.

They say you need to listen to what your body is  
telling you but mine just points and laughs.

What the caterpillar calls the end  
of the world, the Master calls a  
Butterfly...

My idea of working out is doing Nestlé crunches.

*I'm a Mom ...  
what's your super power?*

Why do kleptomaniacs not  
understand puns? They always take  
things literally.

*Only the mediocre are  
always at their best.  
Jean Giraudoux*

**Tact is knowing how far to go  
too far. Jean Cocteau**

# FLOURISHING

May Program with Kathy Setina and Carol Scott  
Review By Trish Manche



For the last meeting of the season, Carol Scott and Kathy Setina presented a wonderful program on the art of flourishing. Here are some of the highlights from the presentation.



A flourish (also called a swash) can add elegance and grace to any lettering. To flourish means to write with sweeping or ornamental strokes or embellish with ornamental lines, figures, etc. When

properly applied, it can create a mood or expression and add endless variety.

Flourishing is an art form that takes years of practice. The flourish should appear to be part of the original script and not look as if it was added as an afterthought. It should not be overly done so to lose the meaning or the



integrity of the word, but have a good balance of white space. By over flourishing the first letter of a word, it may distract the reader and not make

the word appear as a whole. Flourishing cannot “enhance” poor lettering. Practice



perfecting your letter forms first, then moving on to just a very few flourishes. Flourishing should complement your lettered text, not overpower it.

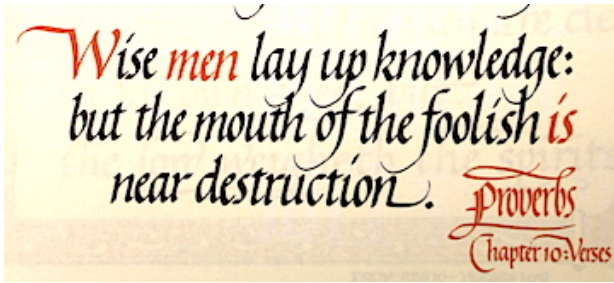
To begin flourishing, a pencil is recommended, then moving onto a felt pen before use of a dip pen. The practice is similar to that of pointed pen or Copperplate with thick and thin detail as were depicted on the practice sheets that were provided during the program. Body mechanics are very important for smooth strokes. You must use your whole arm, keep your elbows up, and apply pressure for smooth strokes. Using only your fingers will change the angle of the pen and create snagging on the paper. When flourishing, you will need to keep moving and keep your pen angle constant.



Begin by warming up. Doing an exercise that engages both sides of your brain will help your eye and hand

coordination when starting. Use your finger to do the motion and help create muscle memory. When drawing a flourish, lift your pen slightly and continue the motion past the end of the page. This will make your flourishes more smooth. Repetition is the key to perfection. Use of a tool like Dura-lar film can assist with the practice placement and different formats

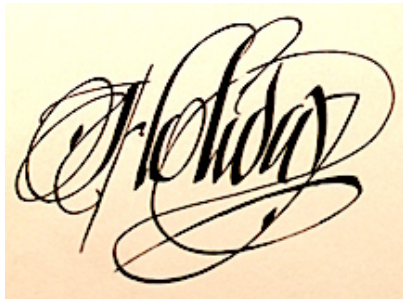
FLOURISHING continued...



without altering your original piece. The film can be wiped clean over and over to create just the effect you desire for your finished piece.

Here are some tips:

- Avoid crossing a thin line with a thick one as this is distracting.
- Make sure white spaces are not too small and should not be symmetrical.



- Don't create hot spots by crossing too many lines in one location.
- Avoid visual boredom by varying your

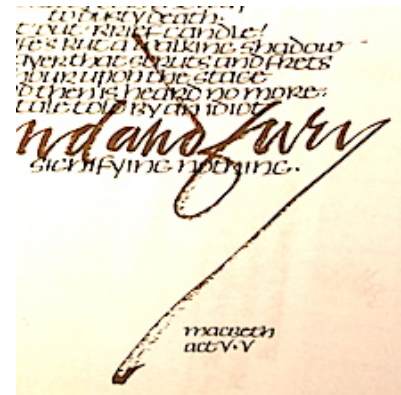
repetition, but remember that less is more.

- Keep sizes and shapes in harmony.
- Be spontaneous!

Along with showing us the basics of flourishing and application, Kathy and Carol provided some history about this art and it's evolution over the years. One of the first uses of flourishing was to add finishing to Roman lettering, and in the seventh century, flourishing aided in the prevention of forgery.

Thank you, Kathy and Carol!

Calligrapher's art clips in order of shown in article:  
 Victoria Pittman  
 leuan Rees  
 Fran Strom  
 Jeanyee Wong  
 Peter Chronis  
 Raphael Boguslav  
 Jean Evans



## Envelope Exchange





# Vintage Nibs

By Thomas Burns



Back in May Harvey shared with us what he called “Dream Nibs” due to their flexibility. They were the Perry #220EF and #104EF (Bird Beak). I got one of each in May to take for a spin around the paper this summer. I gave both a try in the same Oblique holder and used Walnut Ink as that is my go to when sitting down to write. I did have to “prep” them as when

I dipped them into the ink it beaded up just like rain on freshly waxed car. I couldn’t believe this nib was probably from the 40’s or 50’s, that even after all this time the factory coating still seemed to be intact.

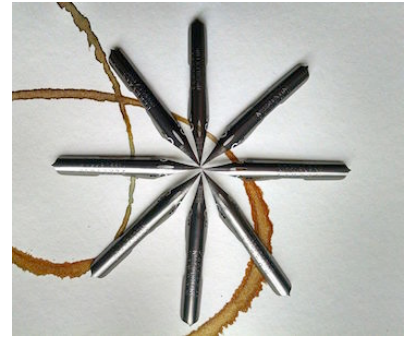
I am a heavy handed calligrapher and have always gone for the “stiffer” nib, even though I



learned on the Gillott 303 (new version). I struggled until I found the Nikko G and thought I was in heaven, so making the leap to a “Dreamy Flexible” nib was sheer madness. Had I gone loco? There was just something inside that said “go for it” after reading the May article. So I did.....

The 220 was slotted first, to my shock and awe I was writing with a flexible nib and it was working! I was having fun like I haven’t had in a long time and I always have fun writing. After a couple pages of “doodling” I put the 220 aside and slotted the 104. Wow, what a difference. It is a long nib hence the Bird Beak reference. I wrote

pretty good, but it didn’t flow for me like the 220 did. Since I’ve been practicing with a lighter touch than even 2 years ago my view of this nib would have been different.

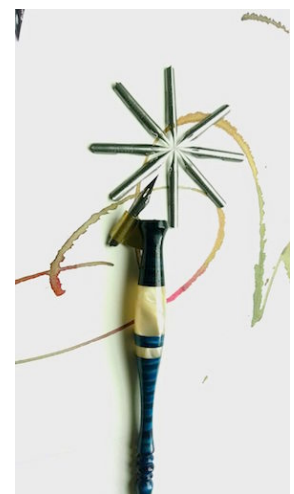


The Perry #220EF is now my go to nib. It is a Dream for me. Harvey has a collection of vintage nibs that is amazing as I found out when I met with him over the summer and purchased several more. Talking with him about nibs and writing is a Dream in itself. Harvey’s knowledge of nibs is in part due to the fact that he has been collecting and selling them for decades. He told me the nibs of today can’t hold a candle to vintage nibs since both the manufacturing process and the materials are so different. I’m developing an appreciation for these nibs of yesteryear. There is only one downside to vintage nibs and that is availability, but with a source like Harvey I feel pretty good, but even he doesn’t have everything and has limited supply.

The point is two fold: Don’t be afraid to try something new or revisit something from years past and not all nibs are for everyone. You have to find the one that works for you and there are many more nibs available than you could ever imagine when you go vintage!

Look Harvey up! He’s at all the meetings and is a wealth of knowledge and is willing to share.

PS. don’t buy all the Perry #220EF. I call dibs!



# Harvey's Helpful Hints

by Harvey Anton

**Business Cards:** Have you ever made your own Business Card to help show your products? It's not as complicated as you might think – fact is, you probably already have a program available on your computer. It's just a matter of selecting the look you want that shows you off best. Be sure to add everything you want people to read, then condense it to make it easier to read. Remember the old adage – leave plenty of white space: Company name, address, phone numbers, email address, web site and other pertinent information. A sample of your work might look great if there is enough room on the card. Remember, the card is only 2-1/2 x 3 inches, a border can look good. Keep all these things in mind when designing your card, eliminate the items that won't cause your client to read the card, pick his teeth with it, or simply throw it away. Keep it simple and clean-looking.

**Prudent Paper Use:** Ever wonder how to get the maximum number of pieces out of a sheet of paper? Try this method: from an 8-1/2 x 11 sheet (example) you want to cut out 3" x 4" pieces: Use your calculator and divide 8-1/2 by 3" = you can only get 2 pieces. Divide 11" by 4" - you get 2 pieces. Now divide 8-1/2" by 4". You get 2 pieces. Now divide 11" by 3" - you will get 3 pieces out. Pay no attention to the fractions (you are only interested in 3" x 4" pieces). Your first result is 2 x 2 or 4 pieces. Now this means that in order to get 6 pieces of 2"x3" out of an 8-1/2" x 11" sheet you need to cut the 11" side into 3" pieces, and on the 8-1/2" side you will need to cut the 4" pieces out. The formula looks like this:  $8\frac{1}{2} \div 4 \times 11 \div 3$ : result looks like this:  $2 \times 3 = 6$  pieces. A real brain teaser, but it works.

**Test The Paper:** Be safe, not sorry – always test the paper you are writing on for its grain direction, erasing and rewriting ability. And when addressing envelopes for a client be sure to ask for at least 10% more than the required amount.

This is customary and you will find that you have ruined several, plus in more cases than not there will be additions and corrections to the list. And make sure the list is computer generated or typewritten. There will be fewer mistakes on your part.

**Wrinkled artwork** can be smoothed out by ironing the wrinkled paper. Place a piece of mat board on the ironing board, then a piece of waxed paper, then the artwork, on top of all this place a piece of white paper. Set the iron on warm setting and smooth the wrinkles away.

*Reggie Ezell says it best: "Sharpen your hand, not Mitchell nibs."*

**Runaway Tools:** To keep your round tools from rolling off your work area, tape a piece of corrugated cardboard to your work area for a resting place. This will give you quick access and keep the tools from rolling off.

*If you haven't tried the vintage nibs yet, you are in for a real treat – not only will they write smoother, but last longer. I bring a large selection with me to the meetings for sale at reasonable prices. A real sleeper is the Esterbrook #14 Bank Pen. It writes very smooth and has good flexibility. Try any of the vintage nibs and be pleasantly surprised. I also have the new Leonardt Principal nib that the writing world is talking about. They're worth a try. I also have my 8 models of penstoffs with me – the latest model fits the small radius of the Brause 66EF. Plus "Harvey's Helpful Hints" available on CD (from 1995 to 2013). Plus the CD of Vintage Penmanship which has over 3400 photos of the "Old Masters'" works. Guaranteed to blow your sox off! Plus 10% of the sales go to Kaligrafos – a win-win!*

*'Til next month, for beautiful Calligraphy,*

Plano Harvey H)972-307-0172, C)972-207-1199,  
Email:) [penstaff@verizon.net](mailto:penstaff@verizon.net)

# Members' Local Classes

---

## Workshops taught by Janell Wimberly

[www.jkwimberlydesign.com/Home.html](http://www.jkwimberlydesign.com/Home.html)

---

## Cristie R. Campo

[cristiecampo@mac.com](mailto:cristiecampo@mac.com)

## Zentangle (artist's home)

Call: 214.714.5344

Fridays 6-9pm

Fee: \$40 supplies included

## Collin College Plano

### Continuing Education

[www.collin.edu/ce/register](http://www.collin.edu/ce/register)

972.985.3711 to register by phone

## Creative Art Center Dallas

[www.creativeartscenter.org/schedules](http://www.creativeartscenter.org/schedules)

---

## Beverly Stewart: Instructor

### Card Making Classes \$5

#### Saturdays 9:30 AM to 11:30 AM

August 29 at THEO from 9:30 to 11:30

September 19 at THEO from 9:30 to 11:30

October 17 at THEO from 9:30 to 11:30

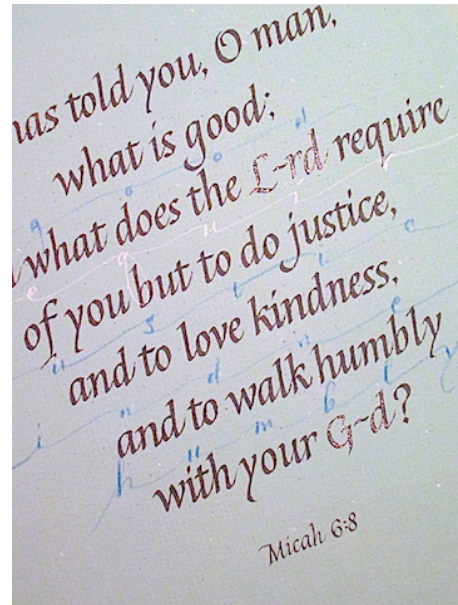
November 7 at THEO from 9:30 to 11:30

At THEO: <http://theosonline.org/Locations.htm> or 214-551-5782 or  
[beverlystewart@gmail.com](mailto:beverlystewart@gmail.com)

Bring your own scissors and adhesives.  
If you make a Stampin' Up! purchase, the class is free. As always there is no pressure to buy.

Come, make cards and have fun!

## Carol Measures Scott



Always wondered about calligraphy? Try out private lessons or a small class. The results? Pleasure, relaxation, and a great time while learning to create lovely letters. Choose either broad-edge pen or pointed-pen. Beginning and continuing classes available.

Days available: Sunday - Thursday

Teacher: Carol Measures Scott

Times available: 11 - 5 most days, some evenings

Location: Sachse, TX 75048 (near Bush/78)

Class size: individual up to 5 in one class

Price: \$30/hour for individuals, less for each added student

Questions? Email Carol -

[callicarol@aol.com](mailto:callicarol@aol.com)

Check out my work:

[www.carolscalligraphy.com](http://www.carolscalligraphy.com)

FB: [facebook.com/carolscalligraphy](https://www.facebook.com/carolscalligraphy)

IG: @carolscalligraphy

Kaligrafos the Dallas Calligraphy Guild  
~ Presents ~

# INSPIRATION!

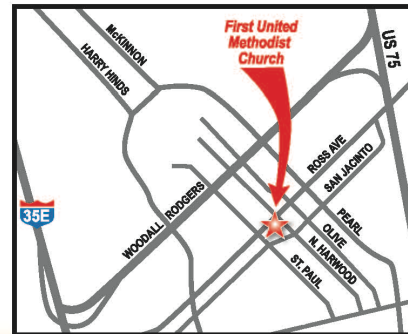
An Exhibit of Inspired Art and Calligraphic Work



**September 4 - September 30, 2015**

Reception ~ Sunday, September 13, 12-2:00 pm

**The Goodrich Gallery**  
First United Methodist Church  
1928 Ross Avenue • Dallas, TX 75201  
(214) 220-2727



Gallery Hours: 9am - 5pm M-F / 9am - Noon, Saturday / 8am - 5pm Sunday