

This
Month's
Social



FLOURISHING HEARTS

VALENTINE SOCIAL AND CARD EXCHANGE

THE DALLAS CALLIGRAPHY SOCIETY

Calligraphos

February 2014 NEWSLETTER
VOLUME 34 | ISSUE 7



"We Ink 'em Up!"

President's Letter



www.kaligrafos.com

February 2014
Volume 34 Issue 7

Published 10 times a year
by Kaligrafos,
The Dallas Calligraphy Society

Board Members

President: Betty Barna
Vice President: Thomas Burns
Treasurer: Rick Garlington
Secretary: Louise Weber
Exhibits:
Historian: Catherine Burkhard
Library: Brenda Burns
Membership: Trish Manche
Newsletter: Anita Hofmeister
Programs: Jeri Wright
Fund Raising: Kathy Setina
Communications: Sherry Barber
Workshops: Sherry Barber

The world is mud-luscious and puddle-wonderful. E.E. Cummings
The life of man in every part has need of harmony and rhythm.
Plato

Hello to Everyone!

The month of love is here and we are all busy (I hope) making Valentine cards. As you know we will be meeting for our annual party at the home of Sherry Barber in Frisco. We will also have a raffle at this event as part of our fundraising for the year. Tickets will be available for \$2 each or 6 for \$10. We have some wonderful things that have been donated for this event.

Hopefully your exhibit pieces are ready to bring to either Janell or myself at the party, or at least you are close enough to bring the exhibit forms to hand in to one of us. The forms are at the end of the newsletter.

The Jaycee Exhibit forms will go to Janell Wimberly so that she can make the display tags for each piece.

The Keller City Hall Exhibit forms will go to Betty Barna along with a jpeg or photo of the work. I am willing to meet you at FUMC Richardson on Saturday, February 22 at 11AM to get your work, however, you must notify me if you will be doing that.

You may enter the same piece of art in both exhibits and if you cannot bring them to the Valentine's party, then you need to make arrangements with either Janell or myself to drop off your artwork, or bring it to me on February 22nd at the church. The exhibit will be put up on Friday, February 28th from 2-4PM.

The opening for the Jaycee Park Center for the Arts Exhibit will be on Sunday, March 16th from 2-4PM. At this time members of Kaligrafos and The Fort Worth Calligraphers Guild will vote on the categories and award the ribbons.

As I write this, we have just had the "Layered Surfaces" mini-workshop with Sherry Barber and Louise Weber. It was very well attended and we all had a lot of fun learning how this process works. Both Sherry and Louise shared their knowledge from their summer conference experience with Suzanne Moore. Thank you both for an excellent presentation.

And finally, the Nominating Committee consists of June Baty, Linda Harrison, Jean Kooda and Margaret Mall, with Wendy Carnegie as the alternate. This year we will be voting on the positions of President and Secretary. If you have someone that you want to put up for these positions, please contact someone on the nominating committee. The slate will be presented at the April meeting and voting will be held at the May meeting.

Betty
President



THE DALLAS CALLIGRAPHY SOCIETY

2013-2014 Kaligrafos Kalendar

• General Meetings

February 8	2:00-4:00pm	Annual Valentine Party
March 8	9:30 am	Aging Paper for use in Calligraphic Pursuits - Janell Wimberly
April 12	9:30 am	Gilding Demo - Margaret Mall & Jeri Wright
May 10	9:30 am	Calligraphic Numerals - Catherine Burkhard

• Board Meetings

March 30	3:00 pm	Betty's House
May 25	3:00 pm	Betty's House

• Mini Workshops

April 26	Romans II - Janell Wimberly - Jaycee Park Center for the Arts
-----------------	----------------------------------------------------------------------

• Kaligrafos Workshops

Mar 1-2, 2014	9:00 am	Lyrical Lombardics - Harvest Crittendon - Jaycee Park Center for the Arts
Oct 4-5, 2014	9:00 am	Contemporary Scripts - Mike Gold - Jaycee Park Center for the Arts

• Kaligrafos Play Days

TBA

Flourishing Hearts Valentine Social, Card Exchange, and Valentine Raffle - February 8th

We hope that you plan on attending our annual Valentine social, and have your handmade original Valentine card in the works or ready to share in the card exchange.

Also, remember the techniques you have used in making your card, so that you can share that information with the others attending.

Your guest, if you're bringing one, may

participate in the exchange as well. Just be sure they have a hand-made original Valentine card, too.

Please refer to your invitations for time and location.

This year the Valentine Raffle will happen simultaneously with the card exchange. See the wonderful offerings for the Raffle on the next page!

Valentine Raffle

Don't miss your chance! The Valentine's Raffle will offer 20+ wonderful items that could be yours with a stroke of luck. If you don't play you can't win! Raffle tickets are \$2 each or 6 for \$10, cash or check only.

The following are some of the exciting items that will be raffled:

-An original Mug designed by Tom Burns

-A 12 piece set of Copic Wide Markers

-A bottle of Inking Cabernet

-Matted Kahlil Gibron Quote lettered by Donna Sabolovic

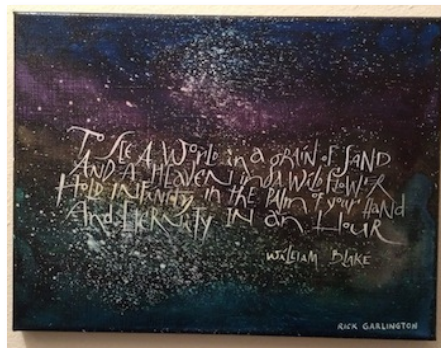
-Matted original 1902 Antique Print of Westminster Abbey

-Framed and matted calligraphy by Marijo Carney

-Framed print of etching "Nantucket" by actor/artist Lionel Barrymore

-Matted calligraphy by Rosemary Oliver

-Calligraphy on canvas by Rick Garlington



Announcements

Welcome
new members
Hillys Lewis
and
Sharon Roberts
and returning members
Bonnie Hoffman
and Suzanne Levy

Upcoming Exhibits!

Exhibit in February

"Written Expressions 2" out at the Jaycee Center for the Arts in Irving - hanging date is Feb. 28 and it will be there through March. See page 13 of this newsletter for registration details.

Exhibit in April

City of Keller Public Arts Program

Kaligrafos members will have an opportunity to exhibit pieces in the Keller Town Hall. The theme is "Western" but other genre will be accepted as well. See page 14 of this newsletter for registration details.

Exhibit in Summer 2014

Legacies II International Calligraphy Conference

Get ready to show your best work at this exhibit! The theme is open and your pieces can be big on canvas, wood panels or framed.

Library Books

Remember that library books are due at the February social! There will not be a "library" table to peruse, and only books requested in advance will be brought.

Browse The Library Thing to pick out a few titles at: <http://www.librarything.com/catalog/Kaligrafos> then send Brenda Burns an email with your selection(s) at library@kaligrafos.com so she can bring your selections to the meeting.

The membership committee loves to receive your **card donations** for birthdays or other occasions. It's so special to share the variety of talents with our members in this way.

2013-2014 **Directories and name tags** are available from the Membership Committee at the monthly meetings. Please assist us by collecting your directory and name tag as soon as possible.

2013-2014 Membership

Join Kaligrafos

The Dallas Calligraphy Society

\$25 for individual membership

\$35 for family membership

http://kaligrafos.com/join_us/join_us.html

Like Kaligrafos on...

facebook





Registration for Legacies, the 33rd International Lettering Arts Conference is open online at www.calligraphyconference.org. This event comes at a very crucial time where computers, tablets and phones have taken over the handwritten word and we need many helping hands for it to be the success it needs to be in the eyes of the public.

If you are interested in volunteering during the conference please sign up online at www.calligraphyconference.org or contact Volunteer Coordinator, Marcy Feldman at volunteers@txlac.org.

The Dancing Letters Scholarship Fund

awards scholarships to events open to the public based on need and demonstrated interest in calligraphy and related arts. For more information, to make donations or to apply for a scholarship call 617-835-6565 or go to: <http://dancinglettersscholarshipfund.org/>

Practice Time & COWBOY WISDOM

Compiled by Randy Stewart

The best sermons are lived, not preached.

Life is not measured by the number of breaths we take, but by the moments that take our breath away. Unknown

Remember that silence is sometimes the best answer.

An old timer is a man who's had a lot of interesting experiences -- some of them true.

Efficiency is intelligent laziness.
Anonymous

A happy childhood has spoiled many a promising life.
Robertson Davies

The best thing I make for dinner is reservations.

Never ask a barber if he thinks you need a haircut.

ART IS A COLLABORATION BETWEEN GOD AND THE ARTIST, AND THE LESS THE ARTIST DOES THE BETTER.

ANDRE GIDE (1869 - 1951)

I WAS GOING TO BUY A BOOK ON PHOBIAS BUT I WAS AFRAID IT WOULD NOT HELP ME
ANONYMOUS

January Program Review

CONCEPT TO FINISH

presented by Carol Scott



Thank you, Carol, for a wonderful and very informative program on the steps to creating a beautiful art piece.

Carol began relaying the steps of how she went about designing a beautiful calligraphic rendering of the poem Beowulf for a client. Quite extraordinarily, she never met the client, but they communicated through email as to what the client wanted.

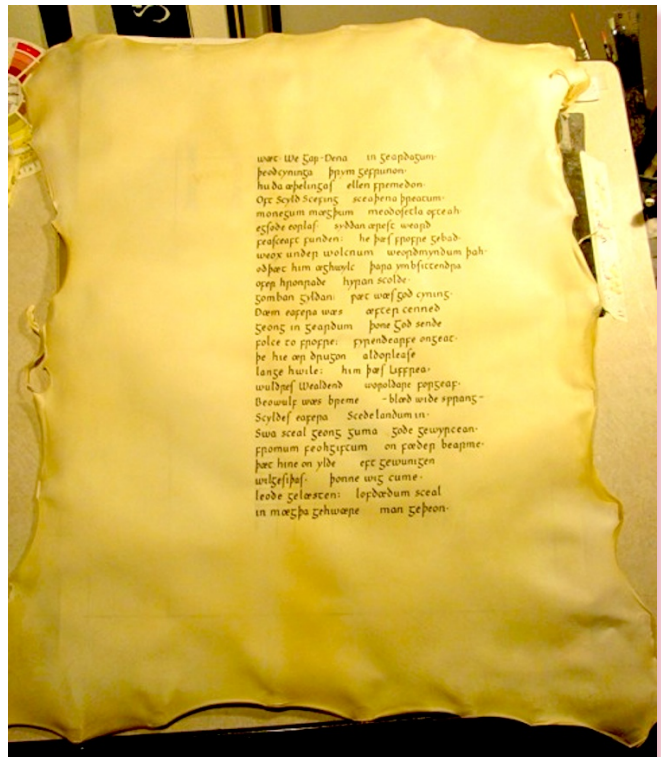
The piece was to be rendered on calfskin vellum that had to be ordered and shipped to her. Printing the approximate size of the lettering on the computer helped her determine the spacing. Much research was put into looking up historical lettering styles of that time, and deciding on what



style or combined styles were to be used. Also, researched was the type of Versal to be used and the border design. Keeping with the time in history, Carol reviewed many pieces that were done during that period and used them as reference for spacing of the letters, words and various sentences. When making the rough draft, she numbered each line of the text to keep from getting on wrong line. The customer approved the draft before Carol started on the final piece.

She used 'removable' Scotch brand tape to affix the draft to the back of the vellum (which coincidentally was two weeks late being delivered by the company from which she ordered it). She made the decision to do the lettering of the text first, and the versal, border and color afterwards.

Since the vellum sheet did not lay perfectly flat, she used a glass stylus (with her left hand) to hold the sheet flat as lettered with her right hand. She began the project in early October and completed it in December. Her hard work and beautiful calligraphy resulted in a fabulous art piece for the customer. Well done! (continued on next page...)



Concept to Finish Review Continued...

Then, Carol led us through the steps of making our own piece, for those who might not know where to begin. First of all, you may decide to start with a favorite quote or personal inspiration. Follow through with various ideas; look at lots of artwork, art magazines, posters, brochures, art books, collage and even music. Keeping journals is a good way to keep your ideas, thoughts and inspirations recorded for review later. Don't be afraid to experiment with new ideas. Thumbnail sketches are an excellent way to begin your design process. A great reference is

the book *Layout and Design for Calligraphers* by Alan Furber, one of the founding members of Kaligrafos. The book is available for checkout from the guild's library and is an excellent tool. Use thumbnail sketches in about 4 x 6 inches. Keep these pencil sketches loose and try lots of different layouts. After you decide which design will best convey your message, redraw it at full size and refine from there. You should then consider things such as balance, linespacing, color and finish the piece with confidence.

Submitted by Jeri Wright



Enjoy a sketching, painting, calligraphy, art adventure in Umbria, Italy with Sharon Zeugin and Sherrie Lovler. Umbria Sketchbook: Portal for Discovery will take place at La Romita School of Art September 22-October 6, 2014. For more information contact Sharon Zeugin: sharonzeugin@yahoo.com or see the registration form: www.artandpoetry.com/laromita.pdf.

With sketchbooks in hand, we will explore the Umbrian hill country. In villages, cities and ancient ruins we will mindfully sketch, paint, and write what personally compels us, engaging with our surroundings as participants and not simply tourists. There are no prerequisites for this course other than curiosity and a spirit of adventure. All levels of art experience are welcome! The pace will be relaxed, with alternating days spent in the studio, and out and about Umbria.

Our home for two weeks will be the converted monastery, La Romita, which boasts three chefs who will treat us daily to healthy, home-cooked meals. Special dietary needs can easily be accommodated. Rooms



are homey and comfortable.

The art studio (the former chapel) is open 24 hours. Daily class instruction will include exercises in mindful drawing, integrating sketching/drawing and watercolor painting with informal, cursive Italic calligraphy and handwriting. Participants will have the opportunity to create a hand bound journal of their experience in Umbria.

Sharon Zeugin and Sherrie Lovler are veteran artists and travelers who have taught many workshops throughout the USA, Canada.

Harvey's Helpful Hints

by Harvey Anton

Get Ready! Don't forget your Valentines this year! Be sure to have all your cards and goodies ready for mailing! And don't forget our annual Valentine Extravaganza!

Pencil Sharpening Keep a battery operated pencil sharpener handy for your pencil lead. These sharpeners are very inexpensive and don't require changing the battery often. They will save you a lot of aggravation and the results are quite good. While on the subject of lead sharpening, did you know what the hole is for on the top of a Stadler Mars automatic pencil? You guessed right – it's for sharpening the lead that feeds this automatic pencil. Guess that's why they call it "automatic". Don't be caught without some type of lead sharpener.

Stickers Like to use stickers on your envelopes and cards? Try using a cookie cutter on colored contact paper to use as an oversized sticker. The recipient will surely be astonished at your artistry and creativity.

Compass Point Holes Try this trick if you don't want compass points in your artwork (who does)? Using rubber cement on a small piece of mat board, cement the mat board square onto your artwork where the point will be positioned, draw your circle(s), then simply rub off the rubber cement – no fuss, no muss.

Piercing Paper Use a pattern maker's pointed wheel for piercing papers (such as note pads,) etc. Use a metal ruler to keep the line straight, but keep the fingers and hands away from the wheel points – they are deadly sharp and puncture skin very easily.

Dry Your Wash Fast To speed dry a page of colored wash place it in a

microwave oven for 30-40 seconds. The paper/wash will come out dry and wrinkle-free.

Experience Training means learning the rules; experience means learning the exceptions.

Ready to Print Before sending your camera-ready layout to the printer always spray the layout with spray fixative. This will give your work a sharper and darker image that will reproduce well. Tell the printer you want your layout returned when he is through with it, and on the back have your name, address, etc. so he will save it for you on pickup.

Avoid Tape Tears If you are hesitant to tape your artwork to your work area, cut off 4 corners of an envelope and tape them down instead. Then slide your artwork into these corners to prevent movement.

Multi-Use Tool Rubberized drawer liners are a very handy item to have, to remove tube and jar lids, and any number of other uses. How about using them in a roll to transport brushes and penstuffs? Secure the roll with rubber bands or colored ribbon.

In case you need a favorite vintage nib, I have a large assortment with me at the meetings along with my handmade wooden penstuffs, Vintage Penmanship CD's with over 3400 photos as a great reference tool and my "Hints" are now on CD which are available. If you have a preference call, email or fax and I will surely bring them to the meeting for you (or mail them to you).

*'Til next month, Happy Valentine's Day – for beautiful writing,
Plano Harvey – penstaff@verizon.net,
972-207-1199, 972-307-0172*

Members' Local Classes

Copperplate with Carol Measures Scott

[Click here to Register](#)

(469) 429-0275

[See Sachse Rec Brochure here](#)

Classes held at Sachse Parks & Recreation Meeting Room 5560 Hwy. 78, Sachse, TX 75048 (as reference, the classroom is 15 min. from the Bush/Coit intersection)



Captivating Copperplate 3 - Creating with Copperplate

Fridays

10AM-12PM 1/17-2/28, no class on 2/14

Prerequisite: Familiarity with Copperplate hand.

Class fee: \$90 **Supply fee:** \$12

Oh, the places you'll go as we move to the next level in our delightful journey! You have learned about minuscules and majuscules. What will you create with your new skills? A collection of pleasing projects await you with a whole range from easy to challenging. Students will choose their own adventures with lots of encouragement, tips and guidance along the way from a seasoned teacher.

Workshops taught by Janell Wimberly

www.jkwimberlydesign.com/Home.html

Beverly Stewart: Instructor

Card Making Classes \$5

2nd Tuesdays 7:00 PM to 9:30 PM

At 6805 Oak Falls Dr, McKinney, TX 75070

3rd Saturdays 9:30 AM to 11:30 AM

At THEO: <http://theosonline.org/Locations.htm> or 214-551-5782 or beverlystewart@gmail.com

Bring your own scissors and adhesives. If you make a Stampin' Up! purchase the class is free. As always there is no pressure to buy. Come, make cards and have fun!

Cristie Campo

cristiecampo@mac.com

Collin College Plano Continuing Education

www.collin.edu/ce/register

972.985.3711 to register by phone

Zentangle 1

March/5-April/6

Wednesdays 6:30-9pm

Calligraphy

Mondays, Feb./3-March/17, 6-8:30pm (class will not meet 3/10)

Wednesdays, April/23-May/28, 6-8:30pm

Creative journaling

Wednesdays, Feb/5-Feb/26, 6-8pm

Creative Art Center Dallas

www.creativeartscenter.org/schedules

Beginning Zentangle

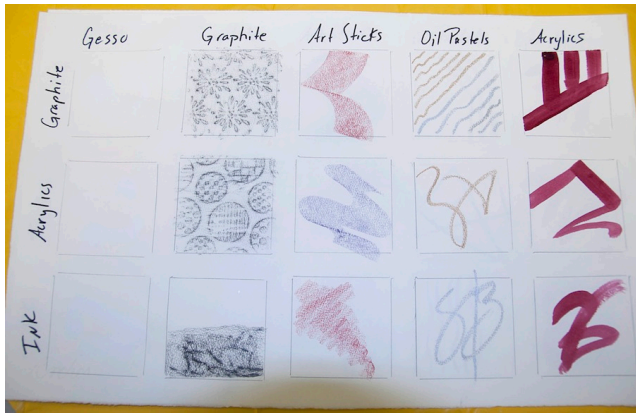
Tuesdays (Location Building B)

Jan. 14 to Mar. 4, 6:30pm - 9:30pm (8 weeks)

Mar 25 to May 13, 6:30pm - 9:30pm (8 weeks)

Mini Workshop Review

Layered Surfaces



Saturday, January 18, 2014 Sherry Barber and Louise Weber presented a mini workshop 'Layered Surfaces' based on ideas they learned from Suzanne Moore. The 19 participants had the opportunity to experiment with a variety of products using different techniques and exploring the various effects on arches text wove before moving on to a finished piece. We labeled 15 test squares so we could later remember and view the combined appearance and textured feel of the backgrounds we created. Gesso, fluid & liquid acrylics, art sticks and oil pastels started our backgrounds just to name a few. My favorite was the addition of the flat edged graphite and of course, Sumi ink on top of the layers already applied.



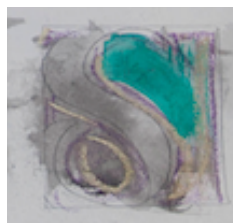
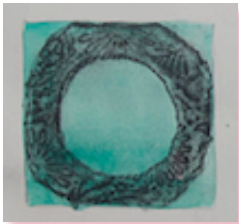
using different techniques and exploring the various effects on arches text wove before moving on to a finished piece. We labeled 15 test squares so we could later remember and view the combined appearance and textured feel of the backgrounds we created. Gesso, fluid & liquid acrylics, art sticks and oil pastels started our backgrounds just to name a few. My favorite was the addition of the flat edged graphite and of course, Sumi ink on top of the layers already applied.



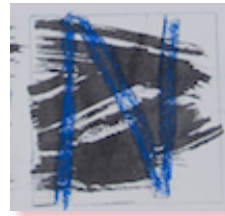
using different techniques and exploring the various effects on arches text wove before moving on to a finished piece. We labeled 15 test squares so we could later remember and view the combined appearance and textured feel of the backgrounds we created. Gesso, fluid & liquid acrylics, art sticks and oil pastels started our backgrounds just to name a few. My favorite was the addition of the flat edged graphite and of course, Sumi ink on top of the layers already applied.



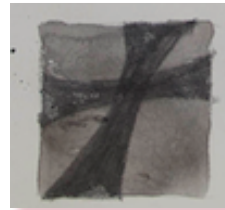
using different techniques and exploring the various effects on arches text wove before moving on to a finished piece. We labeled 15 test squares so we could later remember and view the combined appearance and textured feel of the backgrounds we created. Gesso, fluid & liquid acrylics, art sticks and oil pastels started our backgrounds just to name a few. My favorite was the addition of the flat edged graphite and of course, Sumi ink on top of the layers already applied.



Sherry and Louise provided all the required materials with a small supply fee so we could concentrate on learning. The class handout noted all the materials in detail including useful tips for our later reference. All we had to do was enjoy the process and have fun as we experimented with all the materials they provided. They had all the bases covered with their diligent preparation.



Other than learning the surface possibilities and combinations, we were afforded the opportunity to experiment with sealing our work so that the layered surfaces would accept lettering. This was like getting an unexpected birthday present. I can't wait to buy a supply of UVLS satin varnish.



The morning just flew by while we were busy working. Sherry and Louise provided individual attention as they moved about the room answering questions and watching us work.



We all oo'd and ah'd as the slide presentation showed us what we could do using our newly learned techniques.



Mini Workshop Review Continued...



This mini workshop left us all excited to go home and experiment some more just to see what other design ideas we could create. Sherry

and Louise presented a better-than-great, highly informative, hands-on mini workshop in which we learned invaluable



layering techniques on cards at the Valentine's party on February 8th. See you there!

Submitted by
June Baty



techniques and a lot about creating colorful textured backgrounds to enhance our lettering arts projects. We will no doubt see some of these



January Meeting Highlights

-Submitted by Louise Weber

- President Betty Barna announced that the Executive Board has decided to shorten the meeting agenda, in order to allow sufficient time for the program.
- Valentine invitations were distributed to those in attendance. Wendy Carnegie and Anita Hofmeister were thanked for their lettering.
- Anita Hofmeister asked for volunteers to provide food at the party.
- Kathy Setina thanked members for donating items for the Valentine party raffle. John Neal Books has also donated a Lettering Arts subscription and a Bound & Lettered subscription. Raffle tickets are \$2 each or ten for \$6; cash only.
- Betty reminded members of the Irving exhibit in March and the Keller exhibit in April.
- Sherry Barber reported that the Harvest Crittendon "Lyrical Lombardics" workshop is full.
- The offices of president and secretary will be up for election in May. The nominating committee has been appointed: June Baty (chairperson), Linda Harrison, Jean Kooda, Margaret Mall and Wendy Carnegie (alternate).

Kaligrafos, The Dallas Calligraphy Society & Fort Worth Calligraphers Guild
present

S P R I N G 2 0 1 4 E X H I B I T

Written Expressions 2

DATE: February 28 - March 28, 2014 / Opening Reception, Sunday, March 16, 2-4 pm
~~ Jaycee Park Center for the Arts, 1975 Puritan Dr., Irving, TX 75061 ~~

Here's the opportunity to show off those skills and ideas you've learned from "newbie" classes, or any exciting calligraphic concept learned in a class. Exhibit those masterpieces NOW.

Whether a beginner or seasoned calligrapher, everyone is welcomed and encouraged to participate and show off their skills, ideas, concepts and unique variations & "expressions" of the "written word".

It would be ideal if these are "new" projects, but not required, but less than 2 years since originally created. There is no theme to this exhibit, so "Written Expressions 2" allows a great latitude in your artistic choices and execution. *(must contain calligraphy)*

Pick up for Kaligrafos members will be at the January meeting

and/or February party, or call / contact:

Janell Wimberly 972-519-1099, janellw8@verizon.net

or Betty Barna 972-437-9757, blbarna@mac.com to arrange to hand off your pieces.

There will be awards for 1st, 2nd, 3rd in each category, *Beginner, Intermediate, Advanced and Professional.*

Hang date: Feb. 28, 2-4 pm / Strike: Mar. 28, 2-4 pm

Help to hang and strike would be greatly appreciated

Final entry information must be received by Saturday, **February 22**
Send to: Betty Barna, 4212 Valleybrook Dr, Richardson, TX 75082 or
e mail: blbarna@mac.com

"Written Expressions 2" ~ Feb. 28 - Mar. 28, 2014

1) attach this form to back of picture *(one for each entry)*

Name: _____

Address: _____

Title: _____

Phone: _____ Value: _____

2) attach this form to each entry's protective wrap

Name: _____

Address: _____

Title: _____

Phone: _____ Value: _____

3) ENTRY FORM (send to Betty Barna) () Beginner () Intermediate () Advanced () Professional Please indicate experience level*

Artist: _____ Title of work: _____

Media: _____

Size: _____ Exhibit's value: _____

Description: _____

Contact Info: Phone: _____ E Mail: _____

Release: I agree to comply with the show rules of Kaligrafos & Ft. Worth Calligraphers Guild and will not hold Kaligrafos, The Dallas Calligraphy Society, the Fort Worth Calligraphers Guild, the City of Irving or Irving Arts Center liable for damage/loss of artwork.

Signed: _____ Date: _____

~~~ No group insurance is applied to this exhibit. If you wish to insure your piece, you must purchase insurance privately. ~~~  
*(Framing with GLASS elevates risk of breakage - The above noted groups are not held responsible for damage. Consider framing your piece with acrylic)*

\* EXPERIENCE / **Beginner:** 1 year or less experience, having taken some calligraphy classes & few or no exhibit experience / **Intermediate:** has taken several classes & has exhibited work before, may do some work for sale / **Advanced:** several years of experience, several exhibits, part-time professional projects / **Professional:** Calligraphy done mostly as full time career on a professional and/or commercial market level

## Keller Public Arts Program - Monthly Show Guidelines

1. "Family Appropriate" – no sexual, bloody or violent content
2. One-of-a-kind original artwork only - no copyrighted materials or characters
3. All artwork must be framed and/or finished around the edge and ready to hang with wire
4. Art to be delivered between 8-10AM on designated day to be hung by the City of Keller staff, and not to be removed or replaced without prior consent of the City, and to be picked up by 5:00PM on the last day of show
5. Any piece that may cause a safety issue to employees or citizens, as determined by staff, will not be allowed (such as being too heavy). Keller Arts Board has final approval of all art exhibits submitted.
6. Any artwork sold must be completed through City staff and requires a 20% purchase price fee paid to the City of Keller for designation to the Public Arts Fund.
7. A "Waiver of Liability" form must be signed by the artist and submitted with this form.
8. Receptions will be held on the second Thursday of the month from 7-9PM
9. All personal advertising by the artist will be at their own expense – show information will be posted on the city website based on information provided by the artist(s)
10. Forms, example pictures of artwork and bio/artist statement due 65 days prior to show opening

I have read and agree to abide by the guidelines above:

Signature: \_\_\_\_\_ Date: \_\_\_\_\_

City Contact Information: Mrs. Libby Gergely (817) 743-4000 or publicarts@cityofkeller.com

### Waiver of Liability Form:

For and in consideration of my participation in the Keller Public Arts Program, or any activity associated therewith, the receipt and sufficiency of which is hereby acknowledged, I agree to release the City of Keller, Texas, and its elected and appointed officials, employees, agents or volunteers (the "City") from and against all claims, actions, costs, expenses and demands in respect of death, loss, injury or damage to my person or property whatsoever including, but not limited to damage, theft or destruction of any works of art located on City property, caused, arising out of or in connection with my taking part in the event and notwithstanding that the same may have been contributed to or occasioned by any act or failure to act, including without limitation, negligence of the City.

Further, I assume all liability of any non-participants who accompany me. I understand that I am an independent vendor for all purposes including workers compensation, and am not an employee of the City, or other local sponsors, and their agents, representatives, and employees, and as such they are not responsible for any damages to property, injury or death of myself and any employee for whom I am responsible which may occur while acting as a vendor. This agreement is binding on me, my heirs, executors and administrators.

I have read and understand the above waiver:

Legal Name of Artist: \_\_\_\_\_ Signature: \_\_\_\_\_  
(please print)

Artist and Art Information: (As well as filling out this form, each piece of artwork must be marked on the back with the name of artist, contact information, title, media used, and purchase price – fill out information below for each piece submitted)

Artist: \_\_\_\_\_

Address: \_\_\_\_\_ Phone: \_\_\_\_\_

City/State/Zip: \_\_\_\_\_

Email: \_\_\_\_\_ Website: \_\_\_\_\_

Title of Entry: \_\_\_\_\_

Media: \_\_\_\_\_ Size: \_\_\_\_\_

Purchase Price: \_\_\_\_\_ (or NFS = Not For Sale)