
THE DALLAS CALLIGRAPHY SOCIETY

Calligraphy

APRIL 2010 NEWSLETTER
VOLUME 31 | ISSUE 8

Zentangles



And Calligraphy

Board Members

President: Sherry Barber
Vice President: Betty Barna
Treasurer: Rick Garlington
Secretary: Catherine Burkhard
Exhibits: Bonnie Hoffman
Historian: Catherine Burkhard
Library: Tom Burns
Membership: Nicole Black
Newsletter: Randy Stewart
Parliamentarian: Catherine Burkhard
Programs: Margaret Mall
Projects: Linda Jones
Webmaster: Sherry Barber
Workshops: Jeri Wright / Donna Sabolovic
Public Relations: Debbie Worden

President's Letter



Presidential Seal By Janell Wimberly
"We Ink 'em Up!"
(for outgoing president Kathy Setina)

It is hard to believe that I have been president for almost an entire year. The annual elections are just around the corner and you will have the opportunity to vote on officers for the next year. The current slate of officers is willing to serve one more term, but the floor will be open to anyone who is interested in serving. If not this year, then definitely next. We, as a group, are only what you put into it.

As the days fly by I hope that you are finding time to write a line or two every day - or almost everyday. At a recent workshop I was encouraged to live by the philosophy of "Not a day without a line". If you spend a few minutes organizing yourself and studio, you can make this happen. Keep a handful of quotes nearby and a journal or stack of "good" paper. That practice paper can make incredible envelopes later. See the photo of Louise Weber's work below. You may need to make a special envelope to go with the fabulous iris card that you made this past meeting.

A huge thanks to Catherine Burkhard for teaching us all to make Iris Folded cards. That was an big effort to organize and get the kits ready for us. Of course, that is what Catherine excels at. She is an excellent teacher in all of her fields; calligraphy, bookbinding, card making and more. Thank you to Bonnie Hoffman, Jeri Wright, Peggy Dawson and Betty Barna for the help on the program and the refreshments.

Next month we have another treat. June Baty will give us some insight into the incredibly popular craft of Zentangles. It is a stand alone art form and also combines with calligraphy in very beautiful and creative ways. I hope that you got a chance to see some of her work at the last couple of meetings. Don't miss it. She will be offering a full day workshop on April 24th for those who are truly hooked.

We also have our last Newbie Workshop of the year on April 17th. Donna Sabolovic will be presenting the Parallel Pen. This incredible tool makes fabulous marks and is portable. No more boring waits at the doctor's office or even in line for the post office. Keep one or two in your bag and you can practice and doodle anytime and anywhere. Remember the motto "Not a day without a line".

PRACTICE, PRACTICE, PRACTICE.

Sherry Barber



Envelopes by Louise Weber from paste paper and practice sheets

30 Years of Kaligrafos

2009-2010 Kaligrafos Kalendar

· General Meetings 2009-2010

April 10	9:30 am	Zentangles - June Baty - North Central Division Police Station
May 8	9:30 am	Flourishing Techniques: Making a Statement - Marie Adamson - N. C. Division Police Station

· Board Meetings 2009-2010

· Newbie Workshops 2009-2010

April 17	9:00 am	Learning Parallel Pen - Donna Sabolovic - North Central Division Police Station
----------	---------	---

· Kaligrafos Workshops 2010

June 5,6	9:00 am	Marbling - Betty Barna
October 23,24	9:00 am	4 Fun Books - Leslie Winakur and Maggie Gillikin

Community Service

Mother's Day is just around the corner. Please make one or two Mother's Day cards for the Genesis Women's shelter. These will be for the children in residence to choose and personalize for their Mom.

Bring the cards to the April meeting.

Local Classes

The Ruling Pen* \$80 + \$20 supplies

4 Wed Evenings Apr 7, 14, 21, 28
6:30 to 9:00

OR

4 Thu Mornings Apr 8, 15, 22, 29
10:00 to 12:30

Stamp Asylum reserve at 972 356-1224

Donna Sabolovic dsabolovic@sbcglobal.net

Copperplate Calligraphy* \$80 + \$20 supplies

4 Wed Evenings May 5, 12, 19, 26
6:30 to 9:00

OR

4 Thu Mornings May 6, 13, 20, 27
10:00 to 12:30

Stamp Asylum reserve at 972 356-1224

Donna Sabolovic dsabolovic@sbcglobal.net

Pointed Brush* \$80 + \$20 supplies

4 Wed Evenings Jun 9, 16, 23, 30
6:30 to 9:00

OR

4 Thu Mornings Jun 10, 17, 24, Jul 1
10:00 to 12:30

Stamp Asylum reserve at 972 356-1224

Donna Sabolovic dsabolovic@sbcglobal.net

Private Lessons \$30/Hour

Winter & Spring

flexible hours

My studio in Sachse

Contact: Carol Scott

www.carolscalligraphy.com

Workshops taught by Janell Wimberly

www.jkwimberlydesign.com/Workshops.html

Beginning & Continuing Calligraphy - Italic \$48/\$52

Tue 1:00 - 3:30 PM

March 23, 30, April 6, 13, 20

Carpenter Park (Plano Parks & Rec)

\$48 - Plano residents

\$52 - non-residents

Register at www.planoparks.org

or call 972-208-8087

See samples in slideshow at

www.carolscalligraphy.blogspot.com

Contact: callicarol@aol.com

Card Making Classes \$5

2nd Tuesdays 7:00 PM to 9:30 PM

At 6805 Oak Falls Dr, McKinney, TX 75070

3rd Saturdays 9:30 AM to 11:30 AM

At THEO - <http://theoonline.org/Location.htm>

Beverly Stewart, Instructor

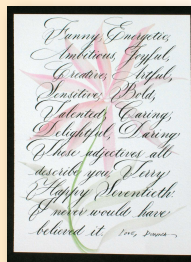
214/551-5782

beverlystewart@gmail.com

Come have a little paper "fling" before you get bogged down in all the homework papers! Bring your own scissors and adhesives. If you make a Stampin' Up! purchase, the class is free. As always there is no pressure to buy. Come, make cards and have fun!

Class Descriptions

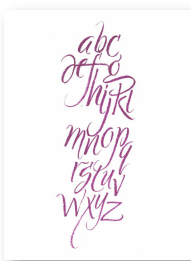
*Copperplate Calligraphy



Copperplate is a script type of lettering created by writing in a flowing hand with a pointed pen. This is a beginning class where the techniques to create the thick and thin lines will be learned. This hand is elegant and beautiful with a free flowing style. Copperplate was widely used commercially in the eighteenth century. It gets its name from copperplate engravings that the writing masters used to reproduce copybooks that students used to learn penmanship. Today this lettering style is used in formal invitations, elegant paragraphs,

poems, journals, greeting cards and scrap books. All Supplies will be provided with the supply fee.

*Pointed Brush



Learning the strokes that apply to pointed brush will be the first focus in this class. We will spend some time on these unique steps to warm up the hand and get us familiar with the strokes used to create letters.. The next step is applying these strokes to an alphabet. We will start with the Italic hand and work from there as time permits. The last portion of the class we will focus on writing on different papers. This way we can see the qualities that different papers require from the writing fluid, the technique in writing and the amount of liquid to obtain the results we want. You will need a Niji waterbrush size medium or a Pentel Color Brush (your choice of color but not metallic).

Optional brushes: Silver Black Velvet #2, Winsor Newton Sable #2 or an Escoda #4. I will bring these brushes for you to try before you buy.

*The Ruling Pen



The ruling pen is a tool with two metal leaves that can be manipulated to create strokes of various widths. It can be turned on its side to make thick and thin lines and lowercase and uppercase alphabets. In this class we will learn how to manipulate the tool and work on various alphabets to see how to create interesting and different looks for several calligraphy hands.

We will also see the variety of looks that this tool can make by writing on different textures of paper. A small book will be made as a sample of the lettering styles,

inks, and papers that you will use in class.

You will need a ruling pen and ink of your choice. All of the other supplies will be provided.

Announcements



Just a MINUTE

March MEETING HIGHLIGHTS

Regular Meeting Tidbit - March 13, 2010

Met at the North Central Division Police Station on Sat., March 13, with 33 members and 3 guests. The mini-exhibit at the Skillman/Southwestern Branch Library ended and the items taken to the Park Forest Branch for rest of March. Change in April's program announced -- to be with June Baty. Donna Sabolovic was taking registrations for the June 5-6 workshop on marbling with Betty Barna. Mother's Day cards will again be brought in April for the Genesis Women's Shelter. Letters of the Month for April will be "Jazzy J" and "Sassy S". The Board will be meeting March 28. A program on Iris Folding was presented by Catherine Burkhard.

-- Catherine Burkhard, Secretary

Officer Nominations

Our current officers

President - Sherry Barber

Vice President - Betty Barna

Secretary - Catherine Burkhard

Treasurer - Rick Garlington

have agreed to run for re-election for their current offices for a second term. The nominating committee submits this slate as official candidates for their respective offices. Additional nominations will be taken from the floor of the April meeting and the election be held.

Anita Hofmeister

Membership

It is time to renew your Kaligrafos membership!

Come prepared with your check book!

\$25 for individual memberships

\$35 for family memberships

We will be gathering your updated contact information as well for the 2010-2011 directory.

Newbie Workshop Parallel Pen

With Donna Sabolovic

Saturday April 17, 2010

At the North Central Division Police Station
9:00 am to noon

Cost of workshop is free for members,
\$15.00 for non-members

Give or send check made out to Kaligrafos to
Or

Donna Sabolovic
422 Provincetown Lane
Richardson, TX 75080

Jeri Wright
353 McDonnell Street
Lewisville, TX 75057



Library Books

Remember that library books are due at the March meeting!


Library Books are due at each regular meeting of Kaligrafos. You don't want the Leprechaun to come looking for you .

You might also want to spring over to The Library Thing at <http://www.librarything.com/catalog/Kaligrafos> and pick some books to check out this month. Send Tom your selections at library@kaligrafos.com so he can bring the books you want to the meeting.

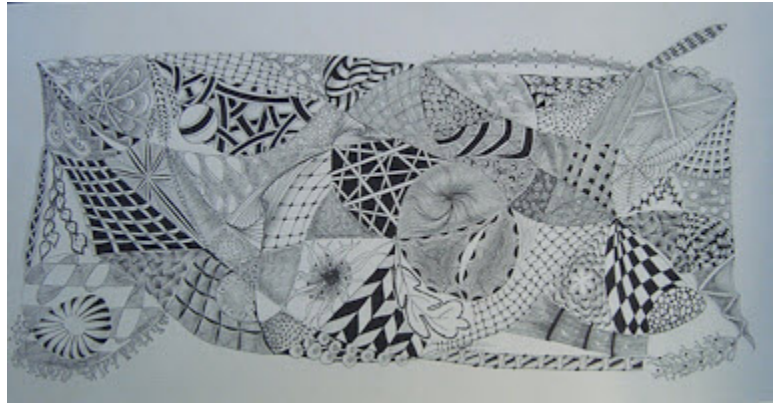
Zentangles

April Program
with June Baty

PROGRAM SUPPLIES NEEDED Please bring a black Sakura 01 micron pen .25mm (these may be found at most craft stores) We will bring a supply for your purchase convenience \$3.00 cash per pen.



Zentangle® Workshop April 24, 2010
10:00 AM - 5:00 PM \$96 + \$20 supplies
40 page color instructional workbook
Artist's Showplace in Richardson
15615 Coit Road @ SW corner of Arapaho
Register at zentangleTexas@yahoo.com
Or call 214-607-0808
June Baty, CZT (Certified Zentangle Teacher)
Jeri Wright (about to be CZT)



Thinking about Facebook?

Getting on Facebook can change your life.

- It's convenient – since it's on the web.
- It makes it easy for you and your friends to share messages, photos, videos and links.
- It enables you to network with others with similar interests way beyond face-to-face communications.
- It's a way to stay in touch and learn more about fellow guild members (beyond the artist to the whole person).

If you were on Facebook, you would have

- Found out that Jeri Wright bought a new convertible
- Learned that Anna Hithersay has a masters in library science
- Read Sandra Douglas' first impressions of India
- Seen the photos Thomas Burns posted of recent workshop work
- Learned that Roann Mathias went to a workshop on copic markers (search to find out what these tools are)
- Seen a photo of the February exhibit at the Skillman-Southwestern Library.

Are you hesitant due to privacy considerations? When you sign up to become a Facebook user, it will ask for your birthday. You can use the true date (or not). Once you get on, look for "Account" at the upper right corner of the page. Choose "Privacy settings" from the drop-down list. You can set each of the boxes to "Only Friends," which is the most restricted setting. That's like making sure only your Facebook friends (your connections) can "see into your house," so to speak. Complete your profile information and edit the settings for them.

Upload a profile photo to help others search you out. Or post a picture of your children or pets or avatar. They can also find you by your email address.

Enter "Kaligrafos" in the search box and become a fan so you can get updates.

Search for your friends and click on the box at the top of their page which says "Add as a friend." You can send a message with the invitation.

.. Continued on pg 8

Marbling Workshop

June 2010

With Betty Barna

Saturday and Sunday June 5 and 6
At the Irving Center for the Arts (Jaycee Park)

9:00 am to 4:30 pm

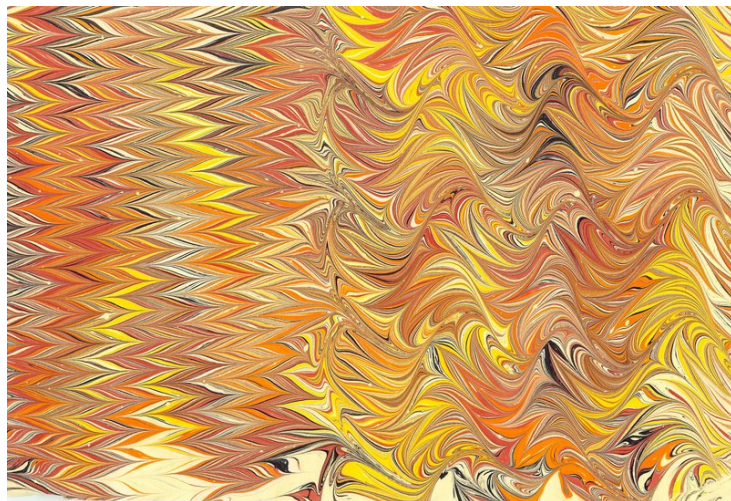
Cost of workshop is \$50

Give or send check made out to Kaligrafos

Or

Donna Sabolovic
422 Provincetown Lane
Richardson, TX 75080

Jeri Wright
353 McDonnell Street
Lewisville, TX 75057



Kaligrafos

At the January meeting, we continued our Letter Challenge! Each month, we continue to choose multiple letters for you to design and interpret in any way that you like. You do not have to do all the letters chosen. No rules, just one guideline...the finished size should be 6 by 6 inches.

Letter Challenge

That's it! Try out new techniques, materials, or styles. Be creative with color. Bring your design to the next meeting to display in our informal "letter gallery".

The letters for April are Jazzy "J"s and Sassy "S"s.

J S

...Julie Yuhanna

Upcoming Exhibits

Kaligrafos has a busy year planned for exhibits

A June exhibit is planned for the Mildred Hawn Gallery in the Hamon Arts Library at the Meadows School of the Arts, SMU.

The August exhibition will be at the Irving Arts Center where cases will be available along with space for artwork to be hung. This is a very large space and the Fort Worth Calligraphers Guild has been invited to exhibit along with Kaligrafos. Prepare any pieces you want to show now so you will be ready in August.

Over 600 Lettering Artists

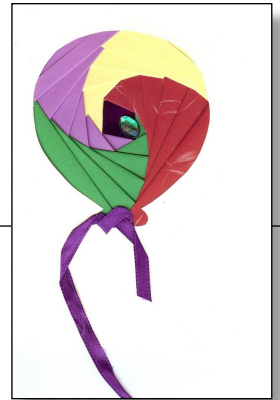
Here is a website with a list of over 600 calligraphers and letter artists with websites started by Christopher Elliott, mrtellio@yahoo.ca. It is publicly available as a Google Doc. and set up so that anyone can add, delete dead links, or edit it. <http://docs.google.com/Doc?docid=0AVfrVEpN42E9ZGMya2M2OGhfNDhmd3MydmdjMg&hl=en>

.. Angie Vangalis

Iris Folding

with Catherine Burkhard

As Sherry mentioned in the Presidents letter, the iris folding program was a hit. Catherine brought many examples from simple to complex. There were kits for beginners as well as seasoned iris folders. Here is what the “balloon” kit looks like when finished.



Spotlight on ... Nan Kirby

I'm a daughter of an Air Force officer. We moved a lot but some memorable locations were Germany, France and Japan.

I graduated from the University of Tampa with a degree in art. My major was in ceramics.

My career was in social services with the Department of Health and Rehabilitative Service in Tampa, FL. After almost 33 years I retired in 2002 and moved to Dallas to be closer to my sister, my only sibling.

I got acquainted with calligraphy by taking a class at the Stamp Asylum taught by Donna Sabolovic. I don't consider myself a calligrapher yet but I'm trying to build my skills. Donna introduced me to Kaligrafos. My favorite thing about Kaligrafos is being around people with artistic interests. The workshops are wonderful too, but the people are the best.

My favorite medium is a little bit of everything which causes me a problem with focusing.

What I'd tell a new calligrapher ... practice, practice, practice. You really do get better with practice.

As for my other interests, I enjoy gardening, traveling and art days with people.

Kaligrafos is looking for members to feature in our spotlight. Do not be shy, we need your participation. If you are willing to participate in the Member Profile Feature please contact Nicole Black.

facebook

You can send a message to an individual. Under the profile picture on their page will be a link “Send a message.” Another option is to look at the box to the right of their profile picture. In the box it says “Write something...” Be aware that if you post your message there (“on the wall”), it will be broadcast to all 894 of your friend’s friends – sometimes this may not be such a good idea.

You can set up lists of your friends to categorize how you know them. For example, “Neighbors,” “Kaligrafos,” or “Family.” These lists are handy in sending out messages to a select subset of your friends at one time. If you’re ready to exploit the medium then actively seek to enlarge your Facebook network.

.. Continued on pg11

Harvey's Helpful Hints



Flourishes

It is easier to do letter flourishing on a down stroke as opposed to an upstroke: turn the paper upside down when flourishing an ascender.

New Nibs

Never use a cigarette lighter flame to burn away the factory oil on a nib - the flame is too hot. Instead use a match or simply place the new nib in your mouth to wash away the factory oil with your tongue.

Sizes

When framing and matting here are some standard sizes to keep handy:

Factory Frames		
5x7	9x12	14x18
8x10	11x14	16x20
8 ½x11	12x16	18x24

Mats in inches:

Outside	Inside
5x7	3 ¼x4 ¼
8x10	6 ½x6 ½
9x12	5 ½x8 ½
11x14	7 ½x9 ½
12x16	8 ½x11 ½
14x18	10 ½x13 ½
16x20	10 ½x13 ½
16x20	11 ½x15 ½
18x24	11 ½x17 ½

art piece. Keep these cards ready for mailing to friends and relatives.

Reservoir

When mixing several colors of gouache a great container is a mini white ice cube tray. The depth is good for dipping your nibs into and the gouache doesn't dry too fast.

No Rolling

Use corrugated cardboard for resting your pen staffs on a slanted board. They won't roll off and will be there when you want them.

Till next month

Plano Harvey

Marbling

Did you know you could use Easter Egg Decorating kits to marbleize paper and envelopes?

Roadblocks

If you have a hard time getting started doing some artwork a lot of times it is because of fear or some other factor. To remove these roadblocks in your mind start doing a few cards to give yourself a push. When the time is right you will be able to start on your

SWEETS & Scribbles

ORDER BLANK

Get additional copies of *Sweets & Scribbles* by returning this order form with your check or money order to:
 Kaligrafos / PO Box 831118 / Richardson, TX 75083-1118
 or contact:
 Linda Jones at (817) 267-5818 (Lindajones817@sbcglobal.net)

Please send me ___ copies of *Sweets & Scribbles* at \$20 ea. plus \$5 ea. sh/hnd
 Enclosed is my check or money order for \$_____.

NAME _____
 ADDRESS _____
 CITY _____ STATE _____ ZIP _____
 TEL. (____) _____ EMAIL _____



2010

30th International Gathering of Letter Artists

**Letter,
Learn,
Experience.**

July 24 – July 31, 2010
 Stonehill College, Easton MA USA

For Information and registration
 visit our website

www.2010CalligraphyConference.com

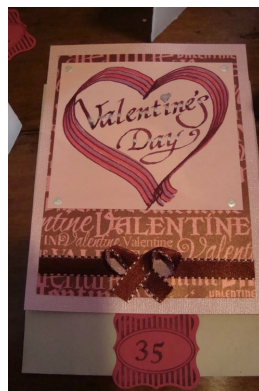
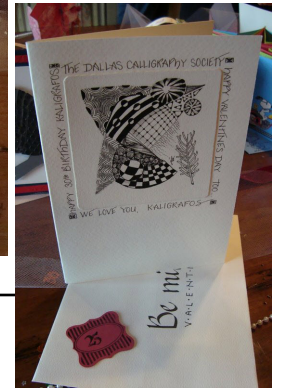
February Program Recap

Valentine's Day Social
And 30th Anniversary Celebration

Continued...

There were many, many valentines to be seen at the Kaligrafos Valentine Social and 30th Anniversary Bash! Here you can see the half that did not make into last months newsletter.

Enjoy!





When you log on, update NewsFeed - cruise through the posts and click on links that have potential interest. If you see that Anita Hofmeister and Nan Kirby have become friends with Carl Rohrs, click on Rohrs. He's a master of the ruling pen, has posted very interesting photos of his work and is connected to many other calligraphers. When you see that some of your friends have "become fans of The Randall M. Hasson Gallery," check out that page – you may want to connect. You don't have to know an individual for your friend invitation to be accepted – most calligraphers will accept.

Facebook will suggest friends to you (see right side of your home page). It reports how many friends you have in common with the person. Scan through your friends' lists of friends – you may be surprised to find folks you know.

What you post to the world on your home page ("What's on your mind?") can vary. Some people never post anything "on their wall." Others use it frequently to post "stream of consciousness." (OMG – please don't do this – or your friends may discreetly choose to Hide all posts from you.)

It's an awesome tool, once you get the hang of the navigation. If you want to know more, just ask any of us who are on Facebook!

Practice Time

Where facts are few, experts are many. - Donald R. Gannon

Being in politics is like being a football coach. You have to be smart enough to understand the game, and dumb enough to think it's important.

- Eugene McCarthy

About the time we think we can make ends meet, somebody moves the ends.
- Herbert Hoover

J S

There's a fine line between fishing and just standing on the shore like an idiot.
- Steven Wright

WHEN THEY CALL THE ROLL IN THE SENATE, THE SENATORS DO NOT KNOW WHETHER TO ANSWER 'PRESENT' OR 'NOT GUILTY.'
- THEODORE ROOSEVELT

When someone tells you something defies description, you can be pretty sure he's going to have a go at it anyway.
- Clyde B. Aster

If two men agree on everything, you may be sure that only one of them is doing the thinking.
- Lyndon B. Johnson

Anything not worth doing is worth not doing well.
Think about it.
- Elias Schwartz

A VIGNETTE OF HISTORY FOR
KALIGRAFOS, THE DALLAS CALLIGRAPHY SOCIETY

upon its 30th Anniversary in 2010

THE FIRST 10 YEARS

1980-81 Year

(name of Kaligrafos, Ltd.; Dues \$15.00; 2nd Sat. set; 1st Valentine Social)

President Susie-Melissa Cherry
 1st Vice-president Bobbie Carr
 2nd Vice-president Genie Amman
 Secretary Norman G. P. Helgeson, MD
 Treasurer Lynn Rubottom

1981-82 Year

(155 members; 1st Fund Raiser; newsletter begun)

President Alan Furber
 First Vice-president & Programs Norman G. P. Helgeson, MD & Paul Siegel (ea. a half term)

Second Vice-president & Membership Grace Ann Vanderpool
 Secretary Nancy Bremer
 Treasurer Ruth Loney

1982-1983 Year

(Library begun; Bylaws revised; new name; 1st exhibit)

President Alan Furber
 Vice-president Susie Egnew
 Secretary Shirley Hammer
 Treasurer Ruth Loney

1983-1984 Year

(Dues increased to \$20.00)

President Susie Egnew
 Vice-president Barbara Horner
 Secretary John Morgan
 Treasurer Leta Nelson

1984-1985 Year

(165 members; 1st auction; 1st Honorary Life Memberships presented)

President Paul Siegel
 Vice-president Betty Barna
 Secretary Catherine Burkhard
 Treasurer Leta Nelson

1985-1986 Year

(1st brochure for publicity)

President Betty Barna
 Vice-president Sue Bohlin
 Secretary Catherine Burkhard
 Treasurer Gaylon Rains

1986-1987 Year

(50-60 avg number at meetings; non-profit status received; archives updated)

President Betty Barna
 Vice-president Catherine Burkhard
 Secretary Ann Wilkinson (May-Aug.) & JoAnn DuVall (Aug-Apr)
 Treasurer Gaylon Rains

1987-1988 Year

(about 200 members)

President Sue Bohlin
 Vice-president Chad Kean
 Secretary Linda Harrison
 Treasurer Betty Barna

1988-1989 Year

(bulk mail for newsletters)

President Sue Bohlin
 Vice-president Chad Kean
 Secretary Marylyn Bennett
 Treasurer Dick Mussett

1989-1990 Year

(10th Anniversary celebrations begun; 5 exhibitions with 1 in Anniversary month at SMU; banquet held in Feb. 1990 for 10th; 2 Honorary Life Memberships presented; 250 members by end of year)

President Catherine Burkhard
 Vice-president Janell Wimberly
 Secretary Sylvia Chamberlin
 Treasurer Dick Mussett

*Look for more next month.
 Catherine Burkhard*