

THE DALLAS CALLIGRAPHY SOCIETY

# Calligraphos

MARCH 2010 NEWSLETTER  
VOLUME 31 | ISSUE 7





[www.kaligrafos.com](http://www.kaligrafos.com)  
March 2010  
Volume 31 Issue 7

Published 10 times a year  
by Kaligrafos,  
The Dallas Calligraphy Society

#### Board Members

President: Sherry Barber  
Vice President: Betty Barna  
Treasurer: Rick Garlington  
Secretary: Catherine Burkhard  
Exhibits: Bonnie Hoffman  
Historian: Catherine Burkhard  
Library: Tom Burns  
Membership: Nicole Black  
Newsletter: Randy Stewart  
Parliamentarian: Catherine Burkhard  
Programs: Margaret Mall  
Projects: Linda Jones  
Webmaster: Sherry Barber  
Workshops: Jeri Wright / Donna Sabolovic  
Public Relations: Debbie Worden

# President's Letter



Presidential Seal By Janell Wimberly  
"We Ink 'em Up!"  
(for outgoing president Kathy Setina)

We are only six weeks into the year 2010 and already we have had a full plate of art. The Valentine social was a tremendous hit. The cards exchanged were an incredible example of what can be done on paper, metal, fabric, wood, wings and even frogs. A huge thank you to Randy and Beverly Stewart for organizing the event. Additional thanks are due to Margaret Mall, Linda Jones, Anita Hofmeister, Louise Weber, Nan Kirby, Bonnie Hoffman, and Julie Yuhana for the great food we consumed. Catherine Burkhard organized a historical game to acquaint the newer members with the history of the past 30 years. The guild received a "paper cake" from Laurie Pearson of the Houston guild. It is a paper sculpture that uses our logo in a very creative way. Thank you Laurie. The social is truly the highlight of our year. The inspiration from the cards will last until next February. So might a few extra pounds from the food and cake.

Sharon Zeugin was here the following weekend to instill some rhythm in us. Her exercises gave us a fresh way of looking at the italic hand and all the many variations that are possible. Her examples were too numerous to count and each one more interesting than the one before. I expect that the work done in the next months will reflect the lively hands that she shared with us. Thank you to Donna and Jeri for organizing the workshop.

Now it is time to put all that inspiration to work. In March the letters of the month are X and I. Soon we will have enough letters to spell something. Remember that we are working toward an exhibit with the letters all being the same finished and framed size of 6" square. I hope that you will be inspired to keep your fingers in the ink and the ideas flowing.

In March, Catherine Burkhard will show us how to use small bits of decorative paper to create cards and art using the iris folding technique. This is a great way to use up some of your practice sheets. Add some color on top of your lettering and fold it.

The nominating committee will be presenting the slate of officers for the next term at the March meeting. Elections will be in April. Make the guild your own and come and vote.

Sherry Barber

# 30 Years of Kaligrafos

## 2009-2010 Kaligrafos Kalendar

### · General Meetings 2009-2010

♣ <b>March 13</b>	9:30 am	<b>Iris Folding</b> - Catherine Burkhard - North Central Division Police Station
<b>April 10</b>	9:30 am	<b>Color Theory</b> - Kathy Setina - North Central Division Police Station
<b>May 8</b>	9:30 am	<b>Flourishing Techniques: Making a Statement</b> - Marie Adamson - N. C. Division Police Station

### · Board Meetings 2009-2010

♣ <b>March 28</b>	3:00 pm	<b>Kaligrafos Board Meeting</b> - TBD
-------------------	---------	---------------------------------------

### · Newbie Workshops 2009-2010

<b>April 17</b>	9:00 am	<b>Learning Parallel Pen</b> - Donna Sabolovic - TBD
-----------------	---------	--

### · Kaligrafos Workshops 2010

<b>June 5,6</b>	9:00 am	<b>Marbling</b> - Betty Barna
<b>October 23,24</b>	9:00 am	<b>4 Fun Books</b> - Leslie Winakur and Maggie Gillikin

# Local Classes

**Spring Flat Brush Florals\*** \$100  
 Wed Evenings March 3, 10, 17, 24  
 6:30 to 9:00  
 OR  
 Thu Mornings March 4, 11, 18, 25  
 10:00 to 12:30  
 Stamp Asylum reserve at 972 356-1224  
**Donna Sabolovic** [dsabolovic@sbcglobal.net](mailto:dsabolovic@sbcglobal.net)

**The Ruling Pen\*** \$80 + \$20 supplies  
 4 Wed Evenings Apr 7, 14, 21, 28  
 6:30 to 9:00  
 OR  
 4 Thu Mornings Apr 8, 15, 22, 29  
 10:00 to 12:30  
 Stamp Asylum reserve at 972 356-1224  
**Donna Sabolovic** [dsabolovic@sbcglobal.net](mailto:dsabolovic@sbcglobal.net)

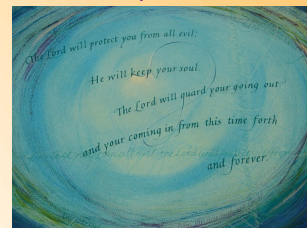
**Copperplate Calligraphy\*** \$80 + \$20 supplies  
 4 Wed Evenings May 5, 12, 19, 26  
 6:30 to 9:00  
 OR  
 4 Thu Mornings May 6, 13, 20, 27  
 10:00 to 12:30  
 Stamp Asylum reserve at 972 356-1224  
**Donna Sabolovic** [dsabolovic@sbcglobal.net](mailto:dsabolovic@sbcglobal.net)

**Pointed Brush\*** \$80 + \$20 supplies  
 4 Wed Evenings Jun 9, 16, 23, 30  
 6:30 to 9:00  
 OR  
 4 Thu Mornings Jun 10, 17, 24, Jul 1  
 10:00 to 12:30  
 Stamp Asylum reserve at 972 356-1224  
**Donna Sabolovic** [dsabolovic@sbcglobal.net](mailto:dsabolovic@sbcglobal.net)

**Private Lessons** \$30/Hour  
 Winter & Spring  
**flexible hours**  
 My studio in Sachse  
**Contact: Carol Scott**  
[www.carolscalligraphy.com](http://www.carolscalligraphy.com)

**Workshops taught by Janell Wimberly**  
[www.jkwimberlydesign.com/Workshops.html](http://www.jkwimberlydesign.com/Workshops.html)

**Beginning & Continuing Calligraphy - Italic** \$48/\$52  
 Tue 1:00 - 3:30 PM  
 March 23, 30, April 6, 13, 20  
 Carpenter Park (Plano Parks & Rec)  
 \$48 - Plano residents  
 \$52 - non-residents  
 Register at [www.planoparks.org](http://www.planoparks.org)  
 or call 972-208-8087  
 See samples in slideshow at  
[www.carolscalligraphy.blogspot.com](http://www.carolscalligraphy.blogspot.com)  
 Contact: [callicarol@aol.com](mailto:callicarol@aol.com)



**Card Making Classes** \$5  
**2nd Tuesdays** 7:00 PM to 9:30 PM  
 At 6805 Oak Falls Dr, McKinney, TX 75070  
**3rd Saturdays** 9:30 AM to 11:30 AM  
 At THEO - <http://theoonline.org/Location.htm>  
**Beverly Stewart, Instructor**  
 214/551-5782  
[beverlystewart@gmail.com](mailto:beverlystewart@gmail.com)  
 Come have a little paper "fling" before you get bogged down in all the homework papers! Bring your own scissors and adhesives. If you make a Stampin' Up! purchase, the class is free. As always there is no pressure to buy. Come, make cards and have fun!

**Uncial** \$25  
 One day workshop for the Ft. Worth Calligraphy Guild  
 Sat March 27  
 9:00 am to 4:30 pm  
 TENseconds Studio  
 Contact Linda Langley 817 439-4755

## Class Descriptions

### \*Spring Flat Brush Florals

Learning manipulations with the flat brush to master various strokes that can be put together to create beautiful spring and summer flower forms as well as other decorative shapes.

These creations can add delightful touches to your calligraphy, used alone as beautiful paintings or embellishment for greeting cards, scrapbooks or journals.

At the end of the class sessions, we will make greeting cards from our practice flowers and decorative shapes.

You will need:

1/2 inch flat brush: Winsor Newton series 995 recommended

Watercolor pans: a Prang set is inexpensive with wonderful pigment or the "Paint Disk" portable round watercolor set

Optional Supplies: 1/4 inch flat brush, #1 or #2 liner brush

Email Donna dsabolovic@sbcglobal.net if you need any of these supplies

### \*The Ruling Pen



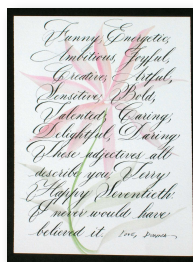
The ruling pen is a tool with two metal leaves that can be manipulated to create strokes of various widths. It can be turned on its side to make thick and thin lines and lowercase and uppercase alphabets. In this class we will learn how to manipulate the tool and work on various alphabets to see how to create interesting and different looks for several calligraphy hands.

We will also see the variety of looks that this tool can make by writing on different textures of paper. A small book will be made as a sample of the lettering styles,

inks, and papers that you will use in class.

You will need a ruling pen and ink of your choice. All of the other supplies will be provided.

### \*Copperplate Calligraphy

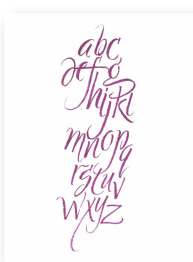


Copperplate is a script type of lettering created by writing in a flowing hand with a pointed pen. This is a beginning class where the techniques to create the thick and thin lines will be learned. This hand is elegant and beautiful with a free flowing style. Copperplate was widely used commercially in the eighteenth century. It gets its name from copperplate engravings that the writing masters used to reproduce copybooks that students used to learn penmanship. Today this lettering style is used in formal invitations, elegant paragraphs,

poems, journals, greeting cards and scrap books.

All Supplies will be provided with the supply fee.

### \*Pointed Brush



Learning the strokes that apply to pointed brush will be the first focus in this class. We will spend some time on these unique steps to warm up the hand and get us familiar with the strokes used to create letters. The next step is applying these strokes to an alphabet. We will start with the Italic hand and work from there as time permits. The last portion of the class we will focus on writing on different papers. This way we can see the qualities that different papers require from the writing fluid, the technique in writing and the amount of liquid

to obtain the results we want. You will need a Niji waterbrush size medium or a Pentel Color Brush (your choice of color but not metallic).

Optional brushes: Silver Black Velvet #2, Winsor Newton Sable #2 or an Escoda #4. I will bring these brushes for you to try before you buy.

---

# Announcements

---



## Just a MINUTE

### FEBRUARY MEETING HIGHLIGHTS

Regular Meeting Tidbit - February 13, 2010

While there was no formal Regular Meeting in February, thanks to a wonderful Valentine Social and 30th Anniversary Celebration, there was a bit of business. A motion was carried approving the 2010-11 Nominating Committee. Members are:

Anita Hoffmeister, Chairman;

Marie Adamson; Carol Scott; Harvey Anton; and Nan Kirby, committee members with Randy Stewart and Louise Weber as alternates.

Thanks to Sherry Barber for opening her home to the February activities and to Beverly and Randy Stewart for chairing the host committee.

-- Catherine Burkhard, Secretary

## Officer Nominations

Our current officers

President - Sherry Barber

Vice President - Betty Barna

Secretary - Catherine Burkhard

Treasurer - Rick Garlington

have agreed to run for re-election for their current offices for a second term. The nominating committee submits this slate as official candidates for their respective offices. Additional nominations will be taken from the floor of the March meeting.

Thank you for your support!  
Anita Hofmeister

## Marbling Workshop

June 2010

MARBLING  
With Betty Barna

Saturday and Sunday June 5 and 6  
At the Irving Center for the Arts (Jaycee Park)  
9:00 am to 4:30 pm  
Cost of workshop is \$50  
Give or send check made out to Kaligrafos

Or

Donna Sabolovic      Jeri Wright  
422 Provincetown Lane      353 McDonnell Street  
Richardson, TX 75080      Lewisville, TX 75057

The word "Odyssey" in a stylized, blue, cursive font with a thick underline.

2010

30th International Gathering of Letter Artists

**Letter,  
Learn,  
Experience.**

July 24 – July 31, 2010  
Stonehill College, Easton MA USA

For Information and registration  
visit our website

[www.2010CalligraphyConference.com](http://www.2010CalligraphyConference.com)

## Library Books

**Remember that library books are due at the March meeting!**

Library Books are due at each regular meeting of Kaligrafos. You don't want the Leprechaun to come looking for you .

You might also want to spring over to The Library Thing at <http://www.librarything.com/catalog/Kaligrafos> and pick some books to check out this month. Send Tom your selections at [library@kaligrafos.com](mailto:library@kaligrafos.com) so he can bring the books you want to the meeting.

# The Many Faces of Italic Workshop

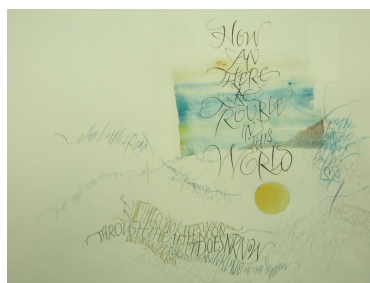
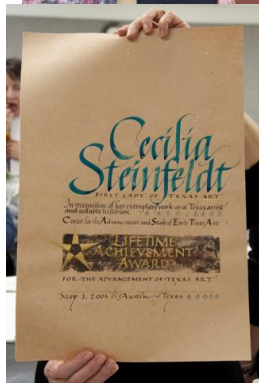
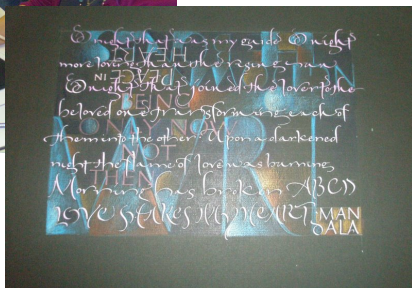
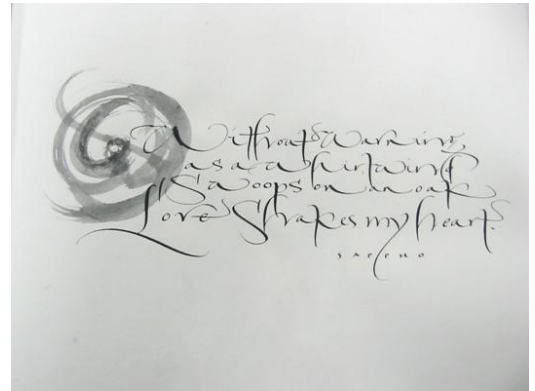
## with Sharon Zeugin

Whether new to calligraphy or experienced, the people who participated in Sharon Zeugin's workshop last month had a breakthrough experience. You may know of the "picket fence" exercise where the goal is to letter italic with such even spacing that a word like "minimum" will appear to have perfectly equidistant downstrokes when you mask just above the base line and just below the waist line. Sharon taught us how to add another dimension – rhythm. We wrote with pencil on a large scale using loose, whole arm movement. Downstrokes with pressure, upstrokes with light pressure – making the downstroke marks to a slow consistent beat and finishing the letters later (example i-dots, t-crossbars, closure of lower case a ). This shifts the brain away from the more common experience of laboring over the shape of each letterform in isolation – and toward fluency. And fluency begets beauty on the page.

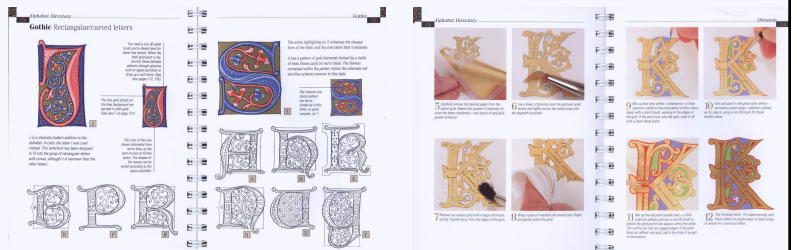
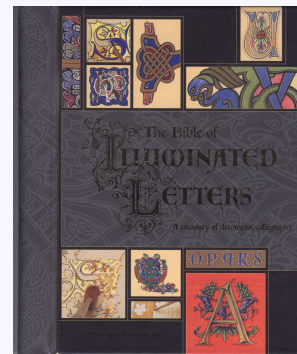
There was time to copy from historical manuscripts and appreciate how modern the lettering can look. We also explored creative alternatives which Sharon has developed. And of course it wouldn't be a Zeugin workshop without time to play with her signature concept of working on Tyvek sheets.

Her approach to calligraphy is to use the writing to find her personal expression. She has developed formulas for writing what moves her. Her passion is to write freely. And she opened our minds to a whole new dimension of the lettering experience.

.. Louise Weber



## Book of the Month



THE BIBLE OF ILLUMINATED LETTERS  
A treasury of decorative calligraphy  
By Margaret Morgan



This book is truly a treasure for your eyes as well as your mind. The pages are filled with information both written and full color photographs taking you through step by step demonstration on how to create Illuminated Letters. The printing of the gold in this book is breath-taking. The colors are rich and exciting. The book takes you from materials, to layout and design and then through the completion of a project. The history and samples of many of the illuminated letters developed over the centuries including the beautiful borders of each era are shown. It is well worth checking this book out of our Kaligrafos library and even adding it to your own.

Donna Sabolovic

## Bookmark Event February 2010

Letter challenges sparked the interest of patrons at the Skillman-Southwestern branch of the Dallas Public Library during February. Free bookmarks were lettered with patrons' names on the last Saturday of the exhibit. This was an excellent opportunity for community service, creating awareness of calligraphy, and marketing the Guild to potential new members. In three hours, the volunteers produced 160 bookmarks – decorated, laminated and strung with ribbon. Each one had the Guild website on it or a Guild business card affixed to the back. Thanks to Nan Kirby, Donna Sabolovic and Louise Weber for donating their time for this fun (and exhausting) event!

...Louise Weber



# Kaligrafos

At the January meeting, we continued our Letter Challenge! Each month, we continue to choose multiple letters for you to design and interpret in any way that you like. You do not have to do all the letters chosen. No rules, just one guideline...the finished size should be 6 by 6 inches.

## Letter Challenge

That's it! Try out new techniques, materials, or styles. Be creative with color. Bring your design to the next meeting to display in our informal "letter gallery".

The letters for March are eXciting "X"s and Inspiring "I"s.

# X I

...Julie Yuhanna

## Upcoming Exhibits

Kaligrafos has a busy year planned for exhibits

A June exhibit is planned for the Mildred Hawn Gallery in the Hamon Arts Library at the Meadows School of the Arts, SMU.

The August exhibition will be at the Irving Arts Center where cases will be available along with space for artwork to be hung. This is a very large space and the Fort Worth Calligraphers Guild has been invited to exhibit along with Kaligrafos. Prepare any pieces you want to show now so you will be ready in August.



Zentangle® Workshop April 24, 2010  
10:00 AM - 5:00 PM \$96 + \$20 supplies  
40 page color instructional workbook  
Artist's Showplace in Richardson  
15615 Coit Road @ SW corner of Arapaho  
Register at [zentangleTexas@yahoo.com](http://zentangleTexas@yahoo.com)  
Or call 214-607-0808  
June Baty, CZT (Certified Zentangle Teacher)  
Jeri Wright (about to be CZT)

---

# Iris Folding

with Catherine Burkhard

## Participants Please Bring:

Glue stick (good quality)

Scotch Tapes: 1 Magic Tape (Green Plaid) -- 1/2" wide best 1

Removable Tape (Blue Plaid) - 1/2" or 1" OK

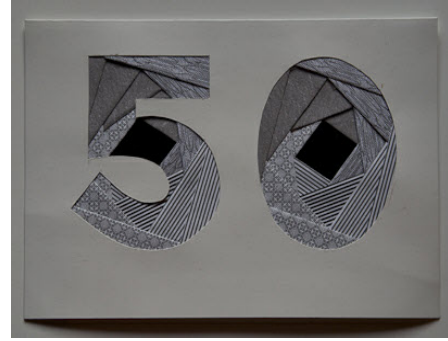
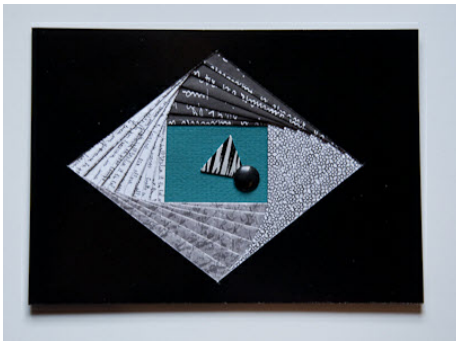
Sharp scissors Small cutting mat (6x9 or 8x10 best)

Metal ruler

Break-away knife (Olfa Cutter-Model A; scalpel; or Xacto with #11 or #23 blades)

A kit to make greeting card will be provided to all participants along with handouts. Samples will be on display and we will discuss design ideas.

NOTE: If some of the items above are not readily available for you, there will be a few extras to share, but not enough for everyone. And if anyone can bring extras to share, that will be helpful as well.



---

Following the March meeting, we have the room available until 3:00 pm for an open forum play day (no instruction just collaboration and a time to work together).

You can work on the iris folding taught during the meeting's program – or bring things to share and let others try before they buy. Sorry – this is not an opportunity to work with ink, as we will not be laying down plastic sheeting to protect the room's new carpeting.

Suggested items for sharing:

Envelope templates (see photo for samples made with paste paper, practice sheets, guild directory

Embroidery templates

Rubber stamps & ink pads

Punches

Markers

Hot foil pen

Things to bring

Card stock

Scissors

Exacto knife

Glue stick (and scrap paper to glue on)

Paper (plain / decorated / paste paper / practice lettering sheets)

## Play Day

### Following the meeting



Bring your lunch or go out with fellow calligraphers and return for an afternoon of fun!



# Harvey's Helpful Hints



## Erasing

Use a rubber cement pickup for erasing pencil lines on all paper surfaces. It will not mar your artwork.

## Easy as Pi

Want to write in a circle the easy way? Try this method: First write the text in a straight line, measure this line of text and this will give you the circumference of the circle needed. Now multiple the length of the line by .31831 (or divide the length by 3.1416) and draw a circle with this diameter and your text should fit around it.

## Pin Stripes

Dress up your cards and mats by using pin striping available at any auto parts store. The pin striping usually comes in an adhesive roll and very easy to apply.

## Sharp Edges

Does the edge of your light table give your writing arm pain? No? That's good, but if it does mount a strip of pipe insulation foam on the edge of the light table. It comes in a tube style and is partially cut in half. Finish cutting the strip in half and mount this to your edge. It will help your arm as well as protect your long paper (that hangs down over the edge) from creasing. It's available from Home Depot and Lowe's as well as plumbing supply stores.

## Clogs

Is your technical pen clogged? For a quick fix (instead of taking it apart for cleaning) simply poke the nib into a kneaded eraser a few times. Sometimes this will pull the inside plunger free and knock out the dried up ink to get the ink flowing again. If all else fails you have let the ink dry inside and the pen will have to be taken apart for a cleaning job. Bottom line: don't let ink dry up in any pen!

## Reservoir

Did you know that a Mitchell reservoir will fit several Copperplate nibs? True! So if your intent is to write long lines with one dipping use this method. It's great when making flourishes too. Have you ever tried to make flourishes without a reservoir mounted on your nib? It's no fun making beautiful flourishes and running out of ink midway through the flourish.

## Recording

Always keep good records of all your work. Using an oversized envelope, label the outside with the date, paper type and size, ink used, name of the client and any other pertinent information. Inside the envelope put all your trials, thumbnails sketches, color samples, a photograph of the completed job, etc. When the client comes back to you to duplicate the job you'll have all the information at your fingertips.

Till next month

*Plano Harvey*

**SWEETS & Scribbles**

**ORDER BLANK**

Get additional copies of *Sweets & Scribbles* by returning this order form with your check or money order to:

Kaligrafos / PO Box 831118 / Richardson, TX 75083-1118  
or contact:  
Linda Jones at (817) 267-5818 (Lindajones817@sbcglobal.net)

Please send me \_\_\_\_\_ copies of *Sweets & Scribbles* at \$20 ea. plus \$5 ea. sh/hnd  
Enclosed is my check or money order for \$ \_\_\_\_\_.

NAME \_\_\_\_\_  
ADDRESS \_\_\_\_\_  
CITY \_\_\_\_\_ STATE \_\_\_\_\_ ZIP \_\_\_\_\_  
TEL. (\_\_\_\_) \_\_\_\_\_ EMAIL \_\_\_\_\_

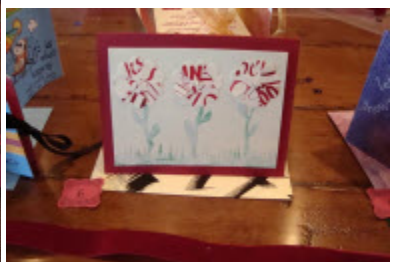
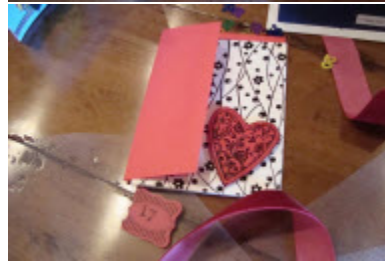
# February Program Recap

## Valentine's Day Social And 30th Anniversary Celebration

There were many, many valentines to be seen at the Kaligrafos Valentine Social and 30th Anniversary Bash! Here you can see about half of them. I will save the other half for next month. There was food, too, although we only seem to have photos of the cake as seen on the front page of this issue. It was all very good.

Thanks to Sherry Barber for her house and the letterpress invitations. The indispensable assistants to Randy and Beverly

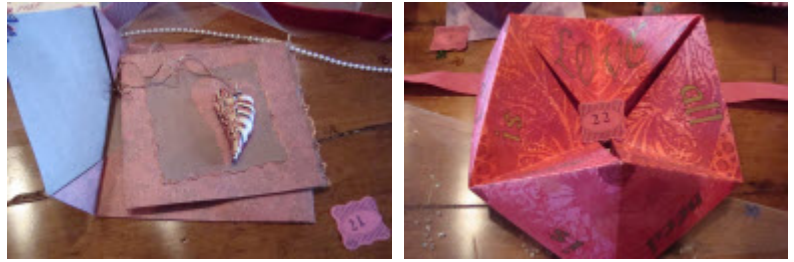
.. Continued on pg 11



... Continued from pg10

Stewart were Margaret Mall, Marilee Haughey, Anita Hofmeister, Louise Weber, Nan Kirby, Catherine Burkhard (30th Anniversary Memories/Program, Cake Topper), Bonnie Hoffman, and Julie Yuhanna. The danger in naming the helpers is that I probably left someone out. Our menu consisted of strawberry cake, bruchetta, coffee, cheese grits, flaming cabbage, quiche, apple potato casserole, fruit salad, punch and water.

...Randy Stewart



## FROM THE MAIL BAG

Here are items of possible interest to you, thanks to our newsletter exchange. Take a look at the items noted below by checking out the newsletter(s) from the Kaligrafos Library:

### Sept-Dec 2009

#### The Valley Calligraphy Guild, Eugene, OR

This whole issue is worth a look - but of special interest are the numerous pages devoted to a Card Extravaganza Workshop", and several pages about "Nature Printing".

### Fall 2009

#### Nibs 'n Inks, Olympia, WA

Try these *funky-foldies* if you haven't done them before: "Kimono Book" on page 11 and "Folded Notes" on page 15.

### Fall 2009 - "Alphabet"

#### The Friends of Calligraphy, San Francisco

Having just had Sharon Zeugin here to present a workshop and hearing much about "gestural writing" -- see the great article on their workshop with Yves Leterme called "Gestural Writing". Good write-up also on the Calligraphy Conference in 2009 at St. John's University.

### Nov 2009 Newsletter

#### Chicago Calligraphy Collective, Chicago, IL

Good article on "Helpful Tips for Submitting Quality Exhibit Entries"!!

### Dec 2009

#### Bow Valley Calligraphy Guild

#### Calgary, AB, Canada

Another newsletter worth looking at in full. Lovely examples of great calligraphy/design throughout. Very interesting idea with their "Day of Crafts", pages 12-14.

### Mar 2010

#### Nashville Calligraphers Guild, Nashville, TN

Hand-written notes, letters, cards, etc. are rare these days. It was refreshing to read "Hand-Written Notes" on page 7. Good thoughts and good ideas.

--Catherine Burkhard

## HELPFUL HINT

This was noted in the **Feb.-Mar 2010 issue of "Postscript", The Calligraphy Society of Victoria, Inc.** -- to reconstitute and store hard gouache:

remove from the tube and break up into small, rough lumps

place in small container with tight-fitting lid

add slowly tepid water, drop by drop and let water soak into the pieces

stir occasionally

stop adding water when mixture is a thick paste consistency

add a few drops of Gum Arabic and mix to final desired consistency

close container and set aside for a few hours to allow mixture to stabilize before use.

---

A VIGNETTE OF HISTORY FOR  
**KALIGRAFOS, THE DALLAS CALLIGRAPHY SOCIETY**

*upon its 30th Anniversary in 2010*

**Fund Raisers in Early Years**

*First Fund Raiser:* Begun first part of 1981, a 1982 “Friendship” calendar with contributions from members for each month was completed the last part of that year.

*Subsequent fund raisers:*

October 2-3, 1981: the “Country Mouse Craft Bazaar” - items made by members.

1982-1983 year: loose-leaf address book with index pages of members’ calligraphic work.

June, 1984: First “White Elephant” auction at Regular Meeting.

1985-1989: publication and sales of “Birthdays and Other Celebrations”, a spiral bound book with 6 greeting cards included -- all calligraphic work by members

June, 1985: participation in “Lakefest” at White Rock Lake, selling gold foil packs and the birthday book.

1986-1987: tote bags, sweat shirts, T-shirts, aprons with art work and Kaligrafos’ name silk screened.

**The “OOPS Award”**

Begun in the summer of 1980, the “Order of Perfection (Sorta)” was a fun event for many years. A certificate of “honor” was presented to calligraphers who, oops, made an error, and admitted to it! It was an excellent way for calligraphers at all levels of skill to know everyone makes mistakes. Alan Furber designed the beautiful certificate.

**The First “Honorary Life Memberships” Bestowed**

In March 9, 1985, an "Honorary Life Membership" was presented to two members, Ernest Fisher and Tom Sawyer. They were designed and hand lettered by Jill Bell.

Look for more next month.

---

## Practice Time

We live in a Newtonian world of Einsteinian physics ruled by Frankenstein logic.

David Russell     *Invention is the mother of necessity.*

*Thorstein Veblen*

Saying what we think gives us a wider conversational range than saying what we know.

Cullen Hightower

If the world should blow itself up, the last audible voice would be that of an expert saying it can't be done.

Peter Ustinov     A coupla months in the laboratory can save a coupla hours in the library.

Westheimer’s Discovery

*There are two kinds of light--the glow that illuminates,  
and the glare that obscures.*

*James Thurber*

HE'S THE KIND OF A GUY WHO LIGHTS UP A ROOM  
JUST BY FLICKING A SWITCH.

UNKNOWN

X I

**My theory is that all of Scottish cuisine is based on a dare.**

**Mike Myers**