

Italic

Minuscules & Majuscules
Chapter 4, continued

Next Meeting
January 14

JAN/FEB 2006

VOLUME 26 | ISSUE 8

Supplies

Nibs - any 3mm nib you are comfortable using (Speedball C-2, Tape or Brause 3mm, Mitchell 1, etc.); felt tip calligraphy pens in 3 mm size are also acceptable; Itoya and Staedtler are two brands that make 3mm tips.

Pen staff if using metal nibs.

Writing fluid of your choice - Higgins Eternal, Sumi or Walnut are nice for dip pens. Watercolor and gouache are wonderful on nice papers if you are familiar with using them.

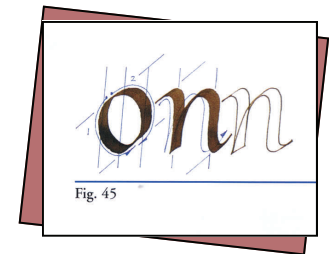
Paper - Any of the papers you have been using previously in this project, or try something new. Suggested papers are Arches Text Wove, Arches watercolor 90 lb. Hot Press, Fabriano Ingres.

Slant board if you use one.

Ruler, sharp pencils and eraser - for lining if you have not done so before the program.

Note: All the papers and inks in your book do not have to be the same type. Some members are using many different types of papers and inks (noting each type) to have samples for future reference.

Art & Craft of Hand Lettering
by Annie Cicale.
Page 64, Figure 45



Important Preparations before January program:

Read:

Page 24-25 and 62-63 for help learning to rule your paper; for Italic we will use 4/5/4 (ascender space, x-height space, descender space) proportions.

Page 43 to familiarize yourself with the skeleton or monoline forms of this style; it is very important to understand the skeleton form before adding the "flesh" with the broad edge pen.

Pages 61-70 to introduce yourself to the basics of Italic minuscules (lower case) and majuscules (capitals).

Cut and rule your paper.

Again, for Italic we will use 4/5/4 (ascender space, x-height space, descender space) proportions.

If you want slant lines (typically 5-7° from vertical), refer to page 63 for guidance in

Program Schedule

2006



JANUARY 14
Italics

Team Captain: Carol Scott
Paul Siegel, Sally Dorn, Jan Ensminger, Jane Johnson,
Dianna Powrie

FEBRUARY 12
(No Program)
Valentine Party

Team Captain: Marie Adamson
Amy Keng, Grace Ann Vanderpool, Catherine Burkhard,
Sharon Schmidt, Debra Worden, Dick Mussett

MARCH 11
Uncial

Team Captain: Paula Van Wagoner
Harvey Anton, Brenda Briscoe, Cheryl Darrow,
Sid & Sandy Foster, Sharon Phillips, Donna Sabolovic,
Becky Young

APRIL 8
Black Letter

Team Captain: Tim Blackburn
Jane Faulkner, Laurie Harper, Nancy Leban, Jenn Mason,
Linda Jones, Bob Wolslegle

MAY 13
Neuland

Team Captain: Angie Vangalis
Terry Porter, Teel Gray, Marilee Haughey, Ruth Loney,
James Walters, Sue Willman, Iliana & Michael Zeyda



Flyers will soon follow

Kaligrafos is sponsoring the May Workshop,
Antique Page
May 27 & 28 (Memorial Weekend)

Kaligrafos Retreat
October 20—22

I was the winner of the grand prize in the Kards for Katrina raffle. For those of you unfamiliar with this raffle, I will explain. During the horrible Katrina hurricane many of us were looking for ways to help the victims of this disaster. Several well known calligraphers came up with the idea of "Kards for Katrina". Other calligraphers around the world were notified to send their handmade cards to Harvest Crittenden. These cards would be grouped together in packages of five. Everyone was encouraged to buy raffle tickets for these card packets with the proceeds going to the survivors of Katrina.

Kards for Katrina
Grand Prize Winner

Kindly submitted by Donna Sabolovic



Kaligrafos made a group card donation to this event, and many of us also purchased raffle tickets. Hundreds of cards were sent to Harvest. Among them was original illuminated Letter from Rosemary Buczek from the [Gilded Quill](#). This was chosen as the grand prize. I was privileged to win two packets of cards and also *the grand prize*. Rosemary contacted me through email and asked what letter I would like and a little information about what decoration I wanted, with the promise I would receive the piece by Christmas. This was a total shock. Yes, I knew the letter would be an original, but I didn't know it would also be a custom order.

Without hesitation I knew who would be the recipient of this prize, my dear husband, Chuck. I quickly replied to Rosemary's email and said I wanted the letter "S" for our last name. Also explained that Chuck was a fly fisherman and asked if she could incorporate this into the design.

December 23rd, Rosemary emailed me saying the letter was on its way. December 24th the doorbell rang with a package. Chuck and I decided we were not going to exchange presents this year. I handed Chuck the package and said "Merry Christmas". Chuck opened it and was amazed.

The picture shows the result of Rosemary's exquisite work. If you want to see more, please visit her website www.gildedquill.com. Now I think that was pretty smart of me—not only did Chuck get a gorgeous present, but so did I.

bits & pieces

Postage Increase

Effective January 8th

First Class Rate ... 39¢

Postcard Rate ... 24¢



Paper (Missouri City, Texas)

<http://www.worldofincarnation.com>

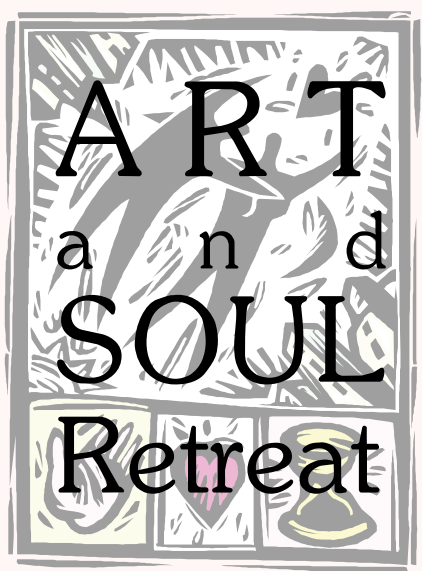
Fair Use Doctrine

<http://www.legal-database.com/fair-use-doctrine.htm>

Calligraphy Sites

<http://homepage.mac.com/kellyink/studio/>

<http://www.sallywightkin.com/>



May 11-16 in Dallas

There are a ton of classes. There is a vendor night that will have lot of very cool stuff (I think this is Saturday). There are quite a lot of book classes. I'll be doing lettering on fabric; Goddess Wear-don't laugh.

www.artandsoulretreat.com

Lisa Englebrecht

www.lisaengelbrecht.com

Yes, Riso announced that they will no longer manufacture the B6 and PG Arts models. If you want a

GOCCO

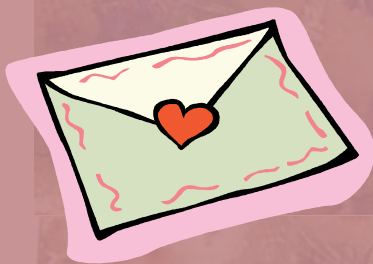
printer, you'll need to get it from Japan or from a distributor in Europe or Australia.

The supplies will be plentiful and available for about 3 years.

You can order from www.goccoshop.com if you need any supplies.

Angie Vangalis

Valentine Party Card Exchange Guidelines



We encourage everyone to participate in the Valentine card exchange this year. Guests are also welcome to participate. Each person is asked to bring one handmade, originally designed card.

We are all very excited and looking forward to what creativity will surface.

This year the Valentine Party Committee decided to follow these guidelines.

**No larger than 5" x 7".
Can be flat or 2-dimensional or
3-dimensional.**

Don't be afraid to try something new!

Valentine Party

Sunday, February 12
2PM-4PM

[Times Ten Cellars](#)
6324 Prospect Avenue
Dallas, Texas

Please join Kaligrafos for an afternoon of
cocktails and conversation

Bring your spouse or a guest
Each person attending is encouraged to
participate in the card exchange

Light refreshments provided
Optional Wine Tasting \$6.00
Coffee Bar \$2.00

RSVP

[Marie Adamson](#)
972.771.4721

January

CATHERINE BURKHARD
Books 'n Letters
214.363.7946
bookltrs@earthlink.net

DONNA SABOLOVIC
Calligraphy & Design
972.234.3748
d.sabolovic@worldnet.att.net

CAROL SCOTT
Carol's Calligraphy
972.675.4569
callicarol@aol.com

In the **Books 'n Letters Studio**, Catherine Burkhard's Fall/Winter Semester of bookbinding classes will come to a close in mid-January.

The Spring Semester begins the week of February 6 and goes thru the last part of May. Contact Catherine for details on the morning and evening classes available.

Beginners will be added into the existing classes so they can be exposed to other techniques while learning the basics.

Other places to look for calligraphy classes and related crafts:

www.txlac.org
www.IrvingArt.org
www.CraftGuildofDallas.com
www.VisualArtDallas.org
www.dallasarboretum.org

BEGINNING ITALIC
January 4, 11, 18, 25
\$90, need a 3.8mm parallel pen
Donna Sabolovic

BEGINNING ITALIC
January 5, 12, 19, 26
\$95 includes supplies
Donna Sabolovic

BEGINNING COPPERPLATE
January 9, 16, 23, 30
Donna Sabolovic

DECORATED HANDWRITING
January 10, 17, 24, 31
\$80
Donna Sabolovic

BEGINNING CALLIGRAPHY
January 19 & 26
\$78
Carol Scott

BEGINNING CALLIGRAPHY
January 21, 28 & February 4
\$30
Carol Scott

INTERMEDIATE CALLIGRAPHY
January 31 & February 7
\$78
Carol Scott

January

- 1/2 Theresa Overall
- 1/10 Jean Kooda
- 1/12 Dorothy Shaw
- 1/13 Susan Noell
- 1/19 Louise Weber
- 1/19 Sid Foster
- 1/23 Carol Cunningham
- 1/25 Judy Myers
- 1/31 Margaret Stanley

Birthdays

February

- 2/3 Dick Mussett
- 2/15 Brenda Briscoe
- 2/18 Sherry Barber
- 2/22 Dianna Powrie

ANGIE VANGALIS: Parallel Pens

CAROL SCOTT: Sells calligraphy supplies including, but not limited to: Paper Ink Nibs & Staffs Books | Also is able to order from TexasArtSupply.com from below retail and pay much less in postage. Orders are placed monthly or more if warranted.

HARVEY ANTON: Has in stock several famous brand nibs and some of the most wanted numbers as well as his own hand-made wooden shaft offset penstoffs for sale. Naturally, the nibs are not in abundant supply since they are no longer being made.

CATHERINE BURKHARD: Has LOTS of bookbinding items (pastepapers, Japanese papers, especially Chiyogami, leathers, bookcloth, etc., and even tools). Also has rubber stamping stuff, or can order calligraphy items.

PLEASE CONTACT MEMBER DIRECTLY

Members
who sell
supplies

MONTHLY MEETINGS: (business & program) are open to the public and are held on the 2nd Saturday of each month. | **MEMBERSHIP:** Open to anyone with an interest in letters. **ANNUAL DUES** are \$25 for individual—payable April 1st. Direct inquiries to Betty Barna 972.437.9757 | **NEWSLETTER CONTRIBUTIONS:** Direct articles, pictures, art or ads to Marie Adamson 3115 Lakeside Drive; Rockwall, Texas 75087 972.771.4721 or fax 413.618.9333 marie@writtentreasure.com **ARTICLES** may submitted via fax, as snail mail, text in an email or Word. Digital photos accepted as JPEG, TIF, GIF. **DEADLINE** for submission of articles and news is the 3rd Saturday of the month prior. **KALIGRAFOS** is published 10 times annually. Publication of any article or advertisement does not imply endorsement by the guild or its officers. Direct all other inquiries, general mailing and newsletter exchanges to **KALIGRAFOS** 429 Bedford Drive, Richardson, Texas 75080. **NO REPRINTS** without permission. **ADVERTISEMENT** of items for sale by members can be posted in the newsletter if space permits. A **FEE** of 10% of any sales through the newsletter or at meetings must be made to **KALIGRAFOS**. Contact newsletter editor at address/phone above for information or to place an advertisement.